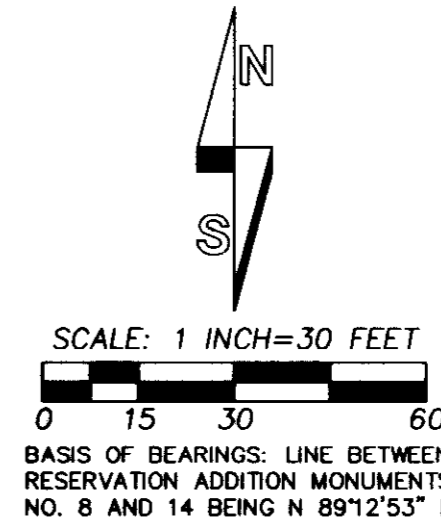


**NOKES REPLAT**  
 A REPLAT OF LOTS 3 AND 4, FRACTIONAL LOT 5  
 AND PORTIONS OF LOTS 2, 10, 11, 12 AND 13,  
 BLOCK 138, RESERVATION ADDITION TO THE TOWN,  
 NOW CITY OF PENDLETON. SITUATED IN THE SE1/4  
 OF SECTION 2, TOWNSHIP 2 NORTH, RANGE 32 EAST, W.M.,  
 UMATILLA COUNTY, OREGON.  
 SEPTEMBER, 2012.

STATE OF OREGON, }  
 COUNTY OF UMATILLA }  
 I certify that this instrument was received and  
 recorded  
 ON November 26, 2012  
 at 11:30 o'clock Am., in the record of  
 PLATS of said County.  
 BOOK PAGE Slide  
 15 73

**OFFICE OF COUNTY RECORDS**  
 By: ...JEAN HEMPHILL...Records Officer  
 Fees \$ 73.00 No. 2012-5980766



**LEGEND**

- - SET 5/8" BY 30" REBAR WITH 1 1/4" RED PLASTIC CAP MARKED "OR PLS 1106 WA PLS 17372".
- ⊕ - MONUMENT AS NOTED.
- ⊕ - CALCULATED POINT ONLY.
- (XOX) - RECORD DIMENSION PER PLAT OF RESERVATION, (RESERVE) ADDITION.
- [XOX] - RECORD DIMENSION FROM DEED DESCRIPTION.
- - FENCE LINE.
- ① - LOT NUMBER, BLOCK 138 RESERVATION ADDITION.
- - - - - INDICATES LOT LINE FROM RESERVATION ADDITION TO EXTINGUISH BY THIS REPLAT.

**NOTES:**

1. RESERVATION ADDITION WAS ORIGINALLY PLATTED AS RESERVE ADDITION.
2. NON-FRACTIONAL LOTS IN BLOCK 138, RESERVATION ADDITION ARE 50.00 BY 100.00 FEET WITH SIDE LINES AT RIGHT-ANGLES.

**CURVE TABLE**

NO	DELTA	RADIUS	LENGTH	CHORD	CHORD BRG
C1	0°00'52"	1195.92'	0.30'	0.30'	N 88°22'04" W
C2	2°13'27"	1195.92'	46.42'	46.42'	N 89°29'13" W
C3	0°55'10"	1195.92'	19.19'	19.19'	S 88°56'29" W
C4	3°08'37"	1195.92'	65.61'	65.60'	N 89°56'48" W
C5	3°52'36"	1195.92'	80.91'	80.90'	S 86°32'36" W

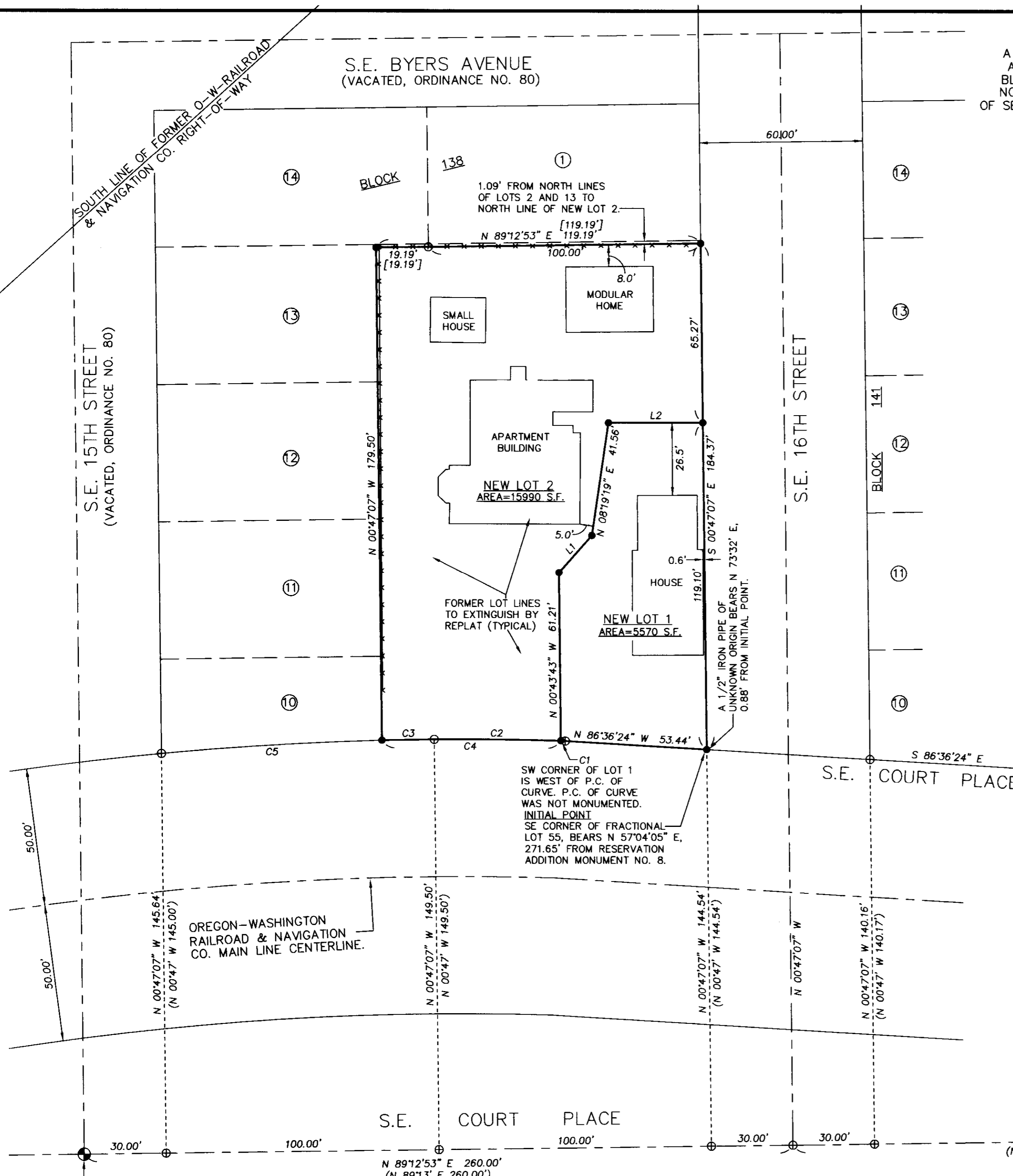
**LINE TABLE**

NO.	BEARING	DISTANCE
L1	N 41°35'59" E	18.16'
L2	N 89°59'01" E	34.71'

**REFERENCE SURVEYS:**

PLAT OF RESERVATION ADDITION.  
 SURVEY NO. Q-343-A.  
 08-50-B.  
 HARTMAN ABSTRACT MAPS FOUND IN  
 COUNTY SURVEYOR'S OFFICE.

REFERENCE DEED USED FOR SURVEY: INSTRUMENT NO. 2009-5600468,  
 UMATILLA COUNTY OFFICE OF RECORDS.



RESERVATION MONUMENT NO. 8.  
 FOUND 2" BRASS CAP IN MONUMENT  
 BOX BY CITY OF PENDLETON.

RESERVATION MONUMENT NO. 14.  
 FOUND STONE WITH "X".  
 ORIGINAL STONE MONUMENT.

I CERTIFY THIS IS AN EXACT COPY OF THE NOKES

*William R. Wells*  
 WILLIAM R. WELLS, PLS

**RECEIVED BY**

Umatilla County Surveyor  
 Date: 12/7/2012  
 Rec'd By: J. New  
 No.: 12-153-B

**REGISTERED PROFESSIONAL LAND SURVEYOR**  
*William R. Wells*  
 OREGON  
 JULY 22, 1977  
 WILLIAM R. WELLS  
 1106  
 RENEWS 6/30/14

**WELLS SURVEYING**  
 1 SW NYE AVENUE, SUITE B  
 P.O. BOX 1696  
 PENDLETON, OR 97801  
 PHONE: (541) 276-6362

DATE: 07/12 DR. BY: WRW/DMT  
 CK. BY: WRW NO: 12-1388

**PROJECT:** \NOKESRP201251  
**NOKES REPLAT**  
 IN  
 LOTS 2, 3, 4, 5, 10, 11, 12 & 13,  
 BLOCK 138, RESERVATION ADDITION,  
 CITY OF PENDLETON.  
 SITUATED IN THE SE1/4 OF SECTION 2,  
 T2N., R32E., W.M.,  
 UMATILLA COUNTY, OREGON.

**NOKES REPLAT**  
 A REPLAT OF LOTS 3 AND 4, FRACTIONAL LOT 5  
 AND PORTIONS OF LOTS 2, 10, 11, 12 AND 13,  
 BLOCK 138, RESERVATION ADDITION TO THE TOWN,  
 NOW CITY OF PENDLETON. SITUATED IN THE SE1/4  
 OF SECTION 2, TOWNSHIP 2 NORTH, RANGE 32 EAST, W.M.,  
 UMATILLA COUNTY, OREGON.  
 SEPTEMBER, 2012.

OWNERS DECLARATION

WE, TYLER S. NOKES AND NICOLE A. NOKES, OWNERS, DO HEREBY ESTABLISH AND ACKNOWLEDGE THIS REPLAT AS THE OFFICIAL MAP AND PLAT OF "NOKES REPLAT", A REPLAT OF LOTS 3, 4, FRACTIONAL LOT 5 AND PORTIONS OF LOTS 2, 10, 11, 12 AND 13 OF BLOCK 138, RESERVATION ADDITION, IN THE CITY OF PENDLETON, UMATILLA COUNTY, OREGON, PREPARED IN ACCORDANCE WITH ORS CHAPTER 92, 92, AS REVISED, AND THE CITY OF PENDLETON AND UMATILLA COUNTY DEVELOPMENT ORDINANCES.

*Tyler S. Nokes*  
 TYLER S. NOKES  
*Nicole A. Nokes*  
 NICOLE A. NOKES

ACKNOWLEDGMENT

STATE OF OREGON) SS  
 COUNTY OF UMATILLA)

THIS INSTRUMENT WAS ACKNOWLEDGED BEFORE ME THIS 24

DAY OF October, 2012

BY TYLER S. NOKES  
*Dawn M. Juhl's*  
 NOTARY PUBLIC

MY COMMISSION EXPIRES: 10-14-16  
 MY COMMISSION NUMBER: 471536

STATE OF OREGON) SS  
 COUNTY OF UMATILLA)

THIS INSTRUMENT WAS ACKNOWLEDGED BEFORE ME THIS 24

DAY OF October, 2012  
 BY NICOLE A. NOKES  
*Dawn M. Juhl's*  
 NOTARY PUBLIC

MY COMMISSION EXPIRES: 10-14-16  
 MY COMMISSION NUMBER: 471536

APPROVALS

CITY OF PENDLETON

CITY OF PENDLETON PLANNING COMMISSION

THE ACCOMPANYING REPLAT IS HEREBY APPROVED THIS DAY

29 DAY OF October, 2012.

*[Signature]*  
 CHAIRPERSON  
*[Signature]*  
 CITY PLANNER

CITY SURVEYOR

THE ACCOMPANYING REPLAT IS HEREBY APPROVED THIS DAY

25<sup>th</sup> DAY OF October, 2012.

*[Signature]*  
 CITY OF PENDLETON SURVEYOR

UMATILLA COUNTY

UMATILLA COUNTY SURVEYOR

I CERTIFY I HAVE EXAMINED THE ACCOMPANYING PLAT, THAT IT COMPLIES WITH THE LAWS OF THE STATE OF OREGON, WITH REFERENCE TO THE FILING AND RECORDING OF SUCH PLATS, AND THEREFORE APPROVE SAID PLAT FOR SIGNATURE BY THE COUNTY COMMISSIONERS OF UMATILLA COUNTY, OREGON.

DATED THIS 30 DAY OF October, 2012.

*[Signature]*  
 UMATILLA COUNTY SURVEYOR

UMATILLA COUNTY COMMISSIONERS

THE ACCOMPANYING REPLAT IS APPROVED FOR FILING AND RECORDING IN THE RECORD OF PLATS OF UMATILLA COUNTY BY THE UNDERSIGNED, BY IT'S ORDER.

DATED THIS 26 DAY OF November, 2012.

*[Signature]*  
 COMMISSIONER  
*[Signature]*  
 COMMISSIONER  
*[Signature]*  
 COMMISSIONER

ASSESSOR & TAX COLLECTOR

WE, THE ASSESSOR AND THE TAX COLLECTOR OF UMATILLA COUNTY, OREGON, DO HEREBY CERTIFY THAT WE HAVE EXAMINED THE TAX RECORDS RELATIVE TO THE LAND COVERED BY THE ACCOMPANYING REPLAT AND THAT ALL AD VALOREM AND SPECIAL ASSESSMENTS DUE PURSUANT TO LAW HAVE BEEN ASSESSED AND COLLECTED.

DATED THIS 23 DAY OF November, 2012.

*[Signature]*  
 COUNTY ASSESSOR  
*[Signature]* Assessor/Int. Mgr.  
 COUNTY TAX COLLECTOR

I CERTIFY THIS IS AN EXACT COPY OF THE NOKES REPLAT.

*[Signature]*  
 WILLIAM R. WELLS, PLS

SURVEYORS CERTIFICATE & NARRATIVE

I, WILLIAM R. WELLS, A PROFESSIONAL LAND SURVEYOR IN THE STATE OF OREGON, DO HEREBY CERTIFY THAT I HAVE CORRECTLY SURVEYED AND MARKED WITH LEGAL MONUMENTS, IN ACCORDANCE WITH O.R.S. CHAPTER 92, AS REVISED, AND THE CITY OF PENDLETON AND UMATILLA COUNTY DEVELOPMENT ORDINANCES, THE LANDS SHOWN IN THE ACCOMPANYING PLAT OF "NOKES REPLAT".

THE SURVEY WAS MADE WITH REFERENCE TO CONTROLLING MONUMENTS SHOWN ON SHEET 1 OF 2.

THE SURVEY WAS MADE BY A 2 PERSON CREW USING A TRIMBLE R8 GEODETIC GPS RECEIVER CONNECTED TO THE OREGON REAL TIME REFERENCE NETWORK AND WITH A LEICA TCR 803 THREE SECOND TOTAL STATION. CONTROL MONUMENT TIES AND CORNERS SET WERE VERIFIED BY REDUNDANT OBSERVATIONS.

REAL PROPERTY DESCRIPTION:

A TRACT OF LAND LOCATED IN THE SOUTHEAST QUARTER OF SECTION 2, TOWNSHIP 2 NORTH, RANGE 32 EAST, W.M., CITY OF PENDLETON, UMATILLA COUNTY, OREGON, DESCRIBED AS FOLLOWS:

THE SOUTHERLY 48.91 FEET OF LOT 2; ALL OF LOTS 3, 4, AND FRACTIONAL LOT 5; THE EASTERLY 19.19 FEET OF THE SOUTHERLY 48.91 FEET OF LOT 13; THE EASTERLY 19.19 FEET OF LOTS 12, 11 AND OF FRACTIONAL LOT 10; ALL IN BLOCK 138 IN THE RESERVATION ADDITION TO THE TOWN, NOW CITY OF PENDLETON, OREGON.

REGISTERED  
 PROFESSIONAL  
 LAND SURVEYOR

*[Signature]*  
 WILLIAM R. WELLS, PLS

*[Signature]*

OREGON  
 JULY 22, 1977  
 WILLIAM R. WELLS  
 1106  
 RENEWS 6/30/14

RECORDING INFORMATION, UMATILLA COUNTY OFFICE OF RECORDS:

STATE OF OREGON, }  
 COUNTY OF UMATILLA }  
 I certify that this instrument was received and recorded  
 ON November 26, 2012  
 at 11:30 o'clock Am., in the record of  
 PLATS of said County.  
 BOOK PAGE Slide  
 15 73

OFFICE OF COUNTY RECORDS

By: ...JEAN HEMPHILL...Records Officer  
 Fees \$ 73.00 No. 2012-5980766

WELLS SURVEYING  
 1 SW NYE AVENUE, SUITE B  
 P.O. BOX 1696  
 PENDLETON, OR 97801  
 PHONE: (541) 276-6362

DATE: 07/12 DR. BY: WRW/DMT  
 CK. BY: WRW NO: 12-1388

PROJECT: \NOKESRP2012S2

**NOKES REPLAT**  
 IN  
 LOTS 2, 3, 4, 5, 10, 11, 12 & 13,  
 BLOCK 138, RESERVATION ADDITION,  
 CITY OF PENDLETON.  
 SITUATED IN THE SE1/4 OF SECTION 2,  
 T2N., R32E., W.M.,  
 UMATILLA COUNTY, OREGON.

RECEIVED BY

Umatilla County Surveyor  
 Date: 11/27/2012  
 Rec'd By: A. Des  
 No.: 12-152-B