

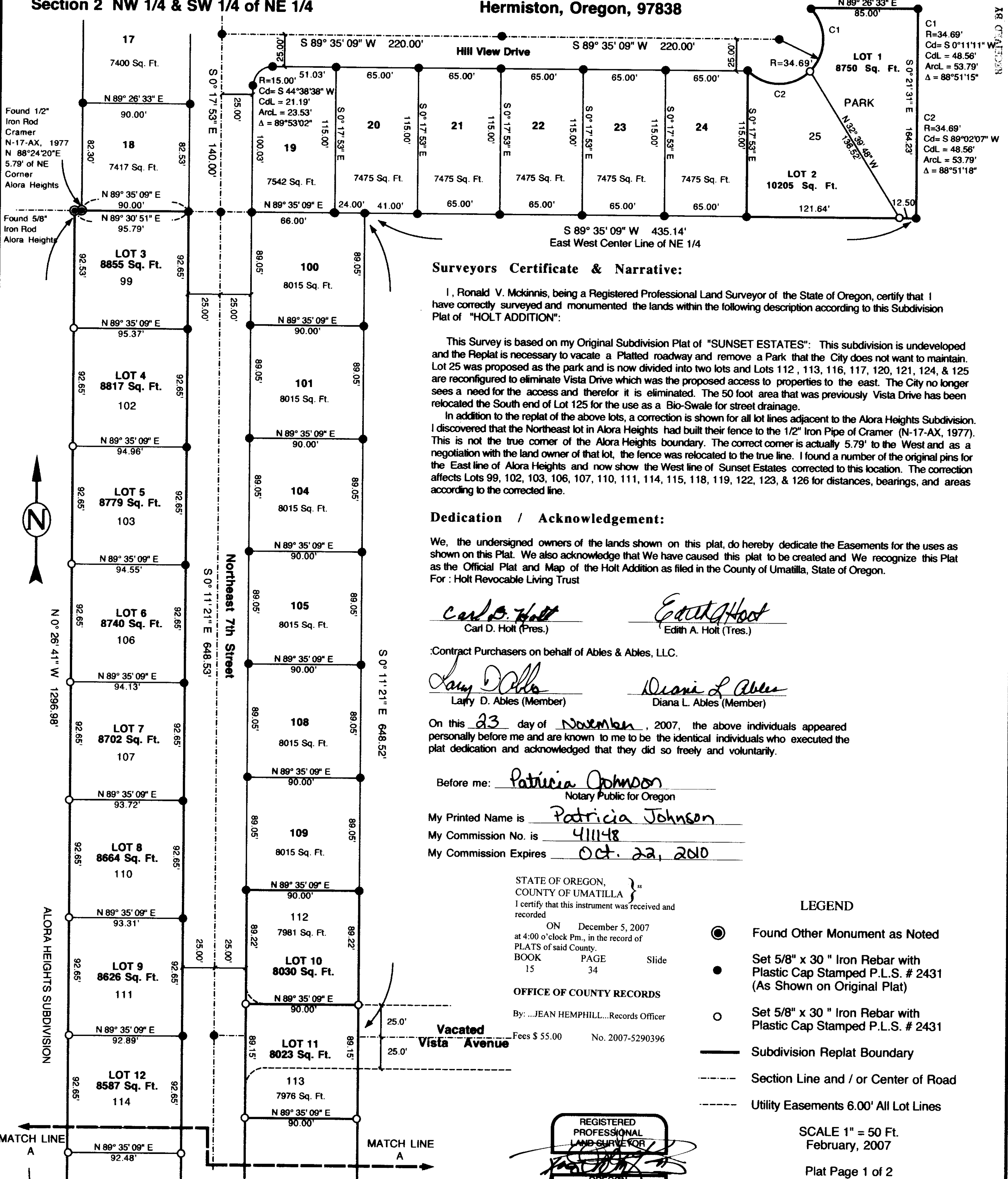
**Holt Addition  
A Replat of Sunset Estates**

Lots 25, 99, 102, 103, 106, 107, 110, 111, 112, 113, 114,  
115, 116, 117, 118, 119, 120, 121, 122, 123, 124, 125, & 126  
City of Hermiston, Umatilla County  
Township 4 North Range 28 East, W.M.  
Section 2 NW 1/4 & SW 1/4 of NE 1/4

for:  
**Carl & Edith Holt**  
820 SW 4th Street  
Hermiston, Oregon, 97838

**Legal Description:**

Lots 25, 112, 113, 116, 117, 120, 121, 124, & 125 of Sunset Estates, an undeveloped subdivision in the City of Hermiston, filed in the Records of Subdivisions, Umatilla County, Oregon. Including Correction of Lines & Distances for Lots 99, 102, 103, 106, 107, 110, 111, 114, 115, 118, 119, 122, 123, & 126 of Sunset Estates.



**Surveyors Certificate & Narrative:**

I, Ronald V. McKinnis, being a Registered Professional Land Surveyor of the State of Oregon, certify that I have correctly surveyed and monumented the lands within the following description according to this Subdivision Plat of "HOLT ADDITION":

This Survey is based on my Original Subdivision Plat of "SUNSET ESTATES": This subdivision is undeveloped and the Replat is necessary to vacate a Platted roadway and remove a Park that the City does not want to maintain. Lot 25 was proposed as the park and is now divided into two lots and Lots 112, 113, 116, 117, 120, 121, 124, & 125 are reconfigured to eliminate Vista Drive which was the proposed access to properties to the east. The City no longer sees a need for the access and therefore it is eliminated. The 50 foot area that was previously Vista Drive has been relocated the South end of Lot 125 for the use as a Bio-Swale for street drainage.

In addition to the replat of the above lots, a correction is shown for all lot lines adjacent to the Alora Heights Subdivision. I discovered that the Northeast lot in Alora Heights had built their fence to the 1/2" Iron Pipe of Cramer (N-17-AX, 1977). This is not the true corner of the Alora Heights boundary. The correct corner is actually 5.79' to the West and as a negotiation with the land owner of that lot, the fence was relocated to the true line. I found a number of the original pins for the East line of Alora Heights and now show the West line of Sunset Estates corrected to this location. The correction affects Lots 99, 102, 103, 106, 107, 110, 111, 114, 115, 118, 119, 122, 123, & 126 for distances, bearings, and areas according to the corrected line.

**Dedication / Acknowledgement:**

We, the undersigned owners of the lands shown on this plat, do hereby dedicate the Easements for the uses as shown on this Plat. We also acknowledge that We have caused this plat to be created and We recognize this Plat as the Official Plat and Map of the Holt Addition as filed in the County of Umatilla, State of Oregon.  
For: Holt Revocable Living Trust

*Carl D. Holt*  
Carl D. Holt (Pres.)

*Edith A. Holt*  
Edith A. Holt (Tres.)

*Larry D. Ables*  
Larry D. Ables (Member)

*Diana L. Ables*  
Diana L. Ables (Member)

:Contract Purchasers on behalf of Ables & Ables, LLC.

On this 23 day of November, 2007, the above individuals appeared personally before me and are known to me to be the identical individuals who executed the plat dedication and acknowledged that they did so freely and voluntarily.

Before me: Patricia Johnson  
Notary Public for Oregon

My Printed Name is Patricia Johnson  
My Commission No. is 411148  
My Commission Expires Oct. 22, 2010

STATE OF OREGON,  
COUNTY OF UMATILLA }  
I certify that this instrument was received and recorded  
ON December 5, 2007  
at 4:00 o'clock Pm., in the record of  
PLATS of said County.  
BOOK PAGE Slide  
15 34

OFFICE OF COUNTY RECORDS  
By: ...JEAN HEMPHILL...Records Officer  
Fees \$ 55.00 No. 2007-5290396

**LEGEND**

- Found Other Monument as Noted
- Set 5/8" x 30" Iron Rebar with Plastic Cap Stamped P.L.S. # 2431 (As Shown on Original Plat)
- Set 5/8" x 30" Iron Rebar with Plastic Cap Stamped P.L.S. # 2431
- Subdivision Replat Boundary
- - - Section Line and / or Center of Road
- - - Utility Easements 6.00' All Lot Lines

SCALE 1" = 50 Ft.  
February, 2007

Plat Page 1 of 2

REGISTERED PROFESSIONAL LAND SURVEYOR  
*Ronald V. McKinnis*  
OREGON  
RONALD V. MCKINNIS  
JAN. 23, 1990  
2431  
Expires 12-31-08

ENGINEERING - LAND SURVEYING - WATER RIGHTS  
**R. V. MCKINNIS ENGINEERING**  
79980 Prindle Loop Road  
Hermiston, Oregon 97838  
(541) -567-2017

RECORDED BY

12-07  
AK  
07-292-B

I, Ronald V. McKinnis do hereby certify that this is a true and exact copy of the Original Plat of "HOLT ADDITION"

Found Unmarked 2" Brass Cap in Concrete Initial Point for Alora Heights Subdivision

**Holt Addition**  
**A Replat of Sunset Estates**  
 Lots 25, 99, 102, 103, 106, 107, 110, 111, 112, 113, 114,  
 115, 116, 117, 118, 119, 120, 121, 122, 123, 124, 125, & 126  
 City of Hermiston, Umatilla County  
 Township 4 North Range 28 East, W.M.  
 Section 2 NW 1/4 & SW 1/4 of NE 1/4

Found 1/2" Iron Pipe  
 Ref. Krumbien  
 S-156-C, 1980

**APPROVALS:**

WE certify that WE have examined and approved this Subdivision RePlat for Recording in the Plat Records of Umatilla County.

This 4<sup>th</sup> day of Dec, 2007  
*David H. Keller*  
 Umatilla County Surveyor

This 28<sup>th</sup> day of NOVEMBER 2007  
*Margaret Taylor*  
 Hermiston City Planning Commission

This 27<sup>th</sup> day of November, 2007  
*Paul Swanson*  
 Hermiston Mayor, for City Council

This 3<sup>rd</sup> day of December 2007  
*Robert Wilson*  
 Hermiston Irrigation Dist.

This 4<sup>th</sup> day of Dec., 2007  
*Angie Gallino for Paul Chalmer*  
 Umatilla County Tax Assessor

This 4<sup>th</sup> day of December, 2007  
*Bettina Knight by Dawn McCle*  
 Umatilla County Tax Collector deputy

This 5<sup>th</sup> day of December, 2007  
*Jessie J. Roberts*  
 Umatilla County Commissioner

This 5<sup>th</sup> day of December, 2007  
*W. Lawrence Stevens*  
 Umatilla County Commissioner

This 5<sup>th</sup> day of Dec., 2007  
*Cibson*  
 Umatilla County Commissioner

OFFICE of COUNTY RECORDS  
 Seal

STATE OF OREGON, }  
 COUNTY OF UMATILLA }  
 I certify that this instrument was received and recorded  
 ON December 5, 2007  
 at 4:00 o'clock Pm., in the record of  
 PLATS of said County.  
 BOOK PAGE Slide  
 15 34

OFFICE OF COUNTY RECORDS

By: ...JEAN HEMPHILL...Records Officer

Fees \$ 55.00 No. 2007-5290396

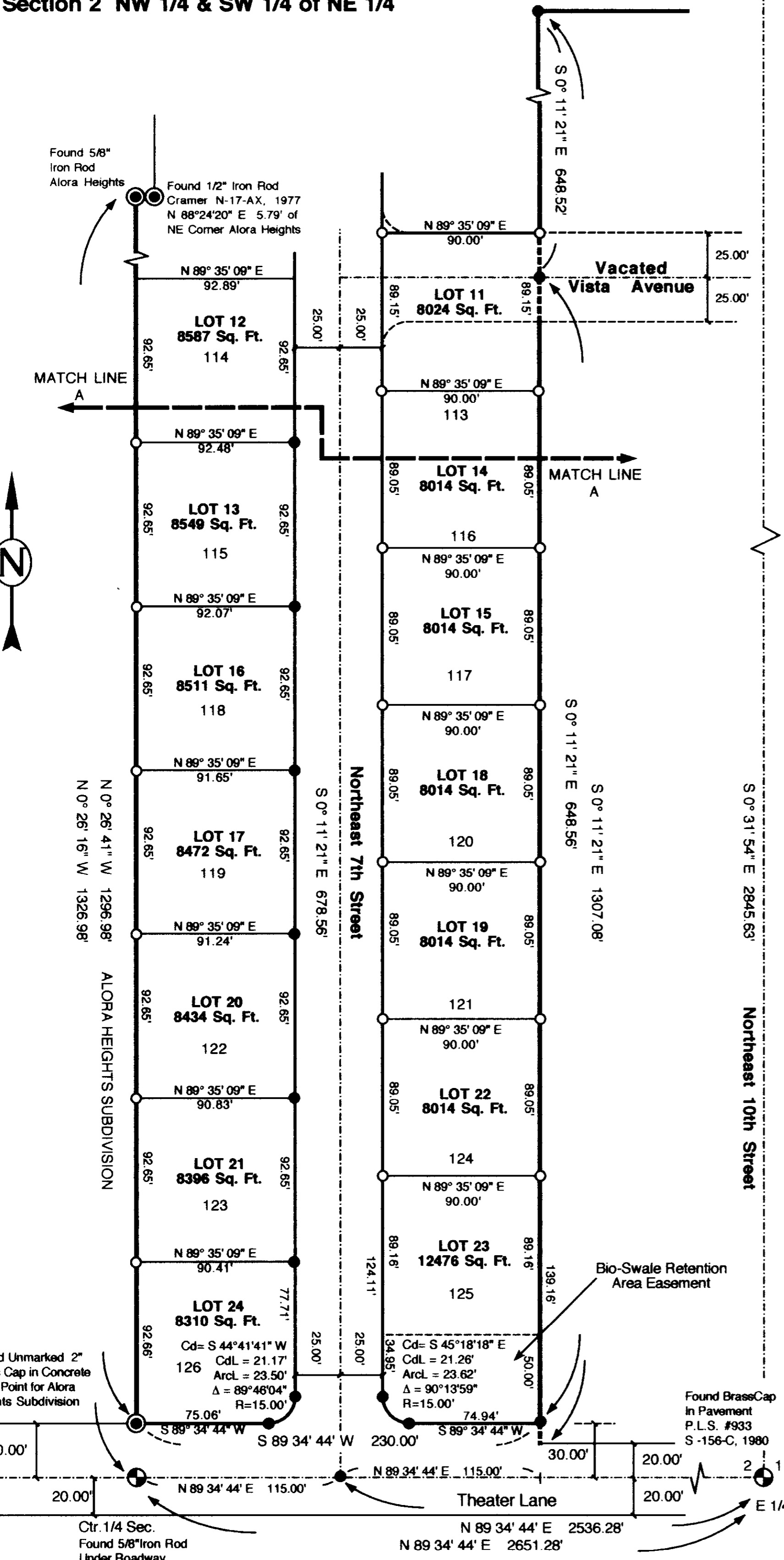
**LEGEND**

- Found Other Monument as Noted
- Set 5/8" x 30" Iron Rebar with Plastic Cap Stamped P.L.S. # 2431 (As Shown on Original Plat)
- Set 5/8" x 30" Iron Rebar with Plastic Cap Stamped P.L.S. # 2431
- Subdivision Replat Boundary
- - - Section Line and / or Center of Road
- - - Utility Easements 6.00' All Lot Lines

SCALE 1" = 50 Ft.  
 February, 2007

Plat Page 2 of 2

ENGINEERING - LAND SURVEYING - WATER RIGHTS  
**R. V. MCKINNIS ENGINEERING**  
 79980 Prindle Loop Road  
 Hermiston, Oregon 97838  
 (541)-567-2017



I, Ronald V. McKinnis do hereby certify that this is a true and exact copy of the Original Plat of "HOLT ADDITION"

REGISTERED PROFESSIONAL LAND SURVEYOR  
*Ronald V. McKinnis*  
 OREGON  
 RONALD V. MCKINNIS  
 JAN. 29, 1990  
 2431  
 Expires 12-31-08

Rev. 11-21-07

RECEIVED BY  
 Umatilla County Surveyor  
 12-07  
 07-293-B 07-292-B