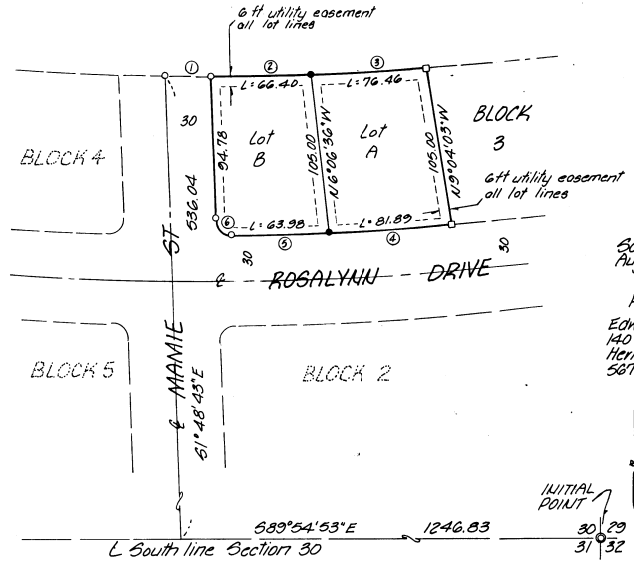


REPLAT OF LOTS 10 and 11, BLOCK 3 OF

VANTAGE NORTH PHASE 1

in the S 1/2 of the SE 1/4 of Section 30, T4N, R29E, W.M.,
Umatilla County, Oregon



Scale: 1" = 50'
Aug. 12, 1989

Prepared By
Edwards Surveying
140 SW 11th St.
Hermiston, Or. 97838
567-3336

REGISTERED
PROFESSIONAL
LAND SURVEYOR

G. DENNIS EDWARDS
951

SURVEYOR'S CERTIFICATE
I, Gene D. Edwards, being first duly sworn depose and say that I have surveyed and marked with proper monuments as indicated on the accompanying Replat of Lots 10 and 11, Block 3 of "VANTAGE NORTH PHASE 1", in Umatilla County, Oregon, and that the INITIAL POINT is the same as the Original Initial Point of "VANTAGE NORTH PHASE 1".

LEGAL DESCRIPTION
Lots 10 and 11, Block 3 of "VANTAGE NORTH PHASE 1", in Umatilla County, Oregon, as recorded in the Plat Books of Umatilla County in Plat Book 12, Page 12.

G. Dennis Edwards
G. Dennis Edwards
PLS 951

Subscribed and sworn before me this 21st day of August, 1989.

Donald C. Carlson
Notary Public for the
State of Oregon

My commission expires: 6-30-92

DEDICATION

Know all men by these presents that the undersigned owners of said tract of land designated in the Surveyors Certificate do hereby establish and acknowledge the accompanying Plat as the official map of Replat of Lot 10 and 11, Block 3 of "VANTAGE NORTH PHASE 1", and hereby dedicate to the Public forever the utility easements designated thereon.

Elmer Hampton
Elmer Hampton

State of Oregon } ss
County of Umatilla }

On this 21st day of August, 1989, appeared personally the above signed, who are known to me to be the identical individual who executed the Plat dedication and acknowledged to me that they executed the same voluntarily.

Donald C. Carlson
Notary Public for the
State of Oregon

My commission expires: 6-30-92

APPROVALS

CITY OF STANFIELD PLANNING COMMISSION
The accompanying Replat is hereby approved and adopted on this 15th day of August, 1989, and approval duly filed.

Stephen D. Spence
Chairman

Donald C. Carlson
Secretary

STANFIELD CITY COUNCIL
The accompanying Replat is hereby approved and adopted on this 5th day of August, 1989, and approval duly filed.

CITY ENGINEER & SURVEYOR
Approved this 31st day of August, 1989.

Stephen D. Spence
Mayor
City Engineer & Surveyor

UMATILLA COUNTY COMMISSION
This is to certify that the accompanying Replat is approved for filing and placed in the record of Town Plats of Umatilla County, Oregon, by the undersigned by its order dated the 24th day of October, 1989.

William S. Howell
Chairman

Allen Younger
Commissioner

James H. Hays
Commissioner

UMATILLA COUNTY CLERK
Attest, I, Sr. County Clerk of Umatilla County, Oregon, do hereby certify that the above named were on the date of said order above specified and are now duly qualified, elected, sworn acting chairman and commissioners of said county, that the above signatures are the genuine signatures thereof and the seal here to affixed is the seal of my office.

James H. Hays
County Clerk

CURVE DATA

No.	Radius	Ch. Bearing	Chord
1	1365	N87°33'30"E	30.00
2	1365	N85°32'06"E	66.39
3	1365	N82°32'14"E	76.46
4	1470	N82°31'41"E	81.87
5	1470	N85°22'10"E	63.98
6	10	S47°35'48"E	14.33

- denotes set 1/2" x 24" iron rebar with aluminum tag stamped PLS 951
- denotes 1nd 1/2" rebar
- denotes 1nd 3/8" rebar
- ⊙ denotes 1st Brass Cap as the Initial Point of Vantage North Phase 1

Note:
Bearings and distances are based on the Original Plat of "VANTAGE NORTH PHASE 1", as recorded in Umatilla County Plat Book 12, Page 12.

I, G. Dennis Edwards, certify that this is an exact copy of the "REPLAT OF LOTS 10 and 11, Block 3, of VANTAGE NORTH PHASE 1".
G. Dennis Edwards

APPROVALS

I, Assessor and I, Tax Collector of Umatilla County, Oregon, each hereby certify that we have examined the Tax records relative to the land covered by the accompanying plat, and that all monies due for State and County Taxes and assessments that could now constitute a lien on said land have been paid and we hereby approve said Replat, dated 24th day of October, 1989.

James J. White
County Assessor

Donald C. Carlson
County Tax Collector

