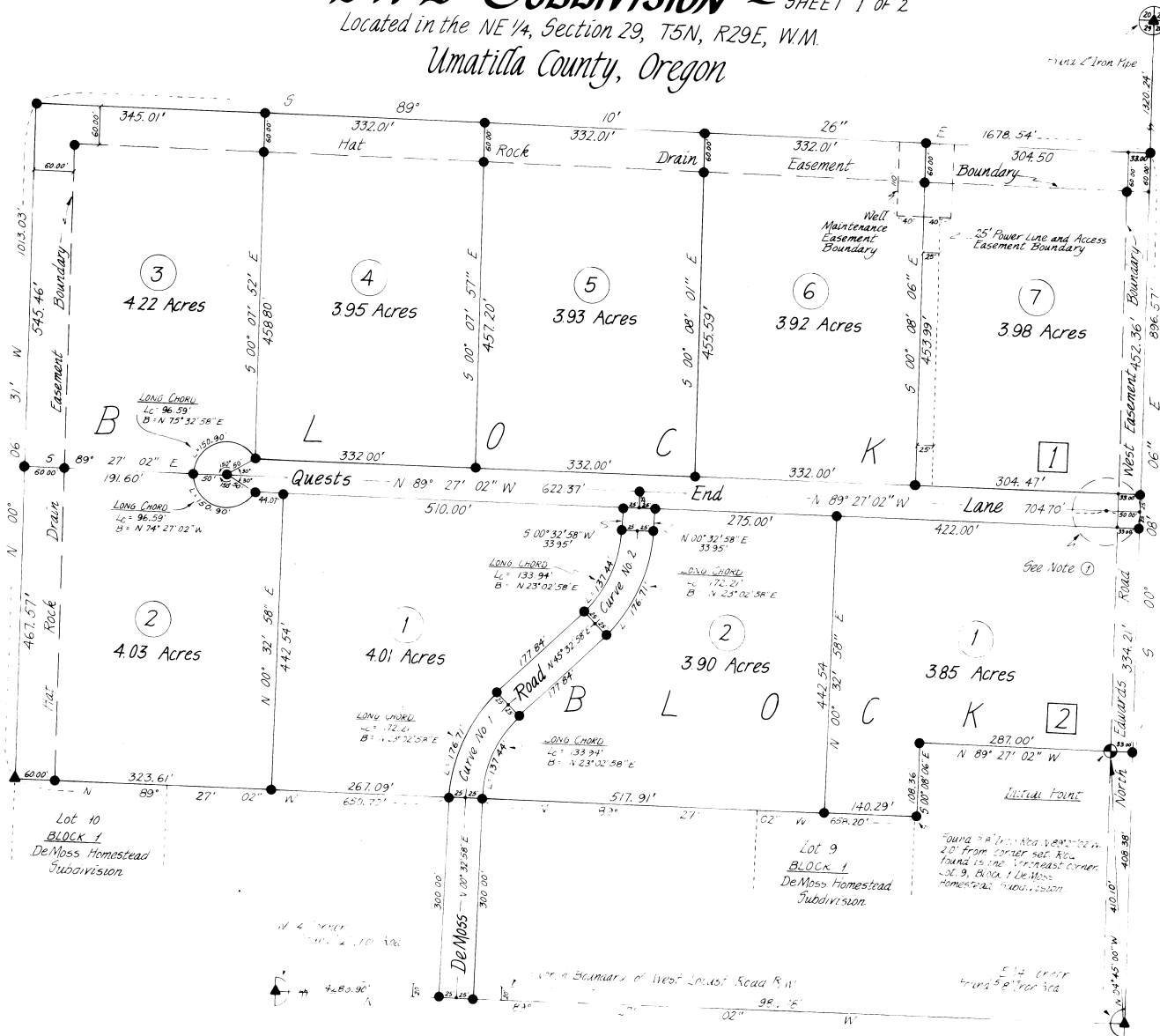


DWD SUBDIVISION - SHEET 1 OF 2

Located in the NE 1/4, Section 29, T5N, R29E, W.M.
Umatilla County, Oregon



STATE OF OREGON, }
COUNTY OF UMATILLA, }
I, J. Dean Fouquette, Sr., County Clerk,
certify that this instrument was received and
recorded on May 4, 1984.
at 1:15 p.m. Book 13, Page 2
of 1000 Pages of said County in
Book 13, Page 2

J. DEAN FOUQUETTE, SR.
By: Betty Jo Brooking Deputy
Page 1 of 2 No. 303462

BASIS OF BEARING
Bearing between E 1/4 Corner and W 1/4 Corner monuments is N 89° 27' 02" W as determined from DeMoss Homestead Subdivision Survey.

DATE: March 9, 1984

SCALE: 1" = 100'

- LEGEND**
- ▲ Monument found as noted.
 - Set 3/8" x 30" Iron Rod with Aluminum Cap stamped RLS 1242.
 - - - Easement Boundaries as noted.
 - ⊙ Initial Point set 2" Brass Cap in 6" Dia. x 24" concrete monument.

- NOTES**
- ① 50' Radius temporary cut-de-sac easement to be vacated when North Edwards Road is improved.
 - ② County Road Designations No. 1253: North Edwards Road No. 714: West Locust Road
 - ③ Exterior Boundary determination set forth in Telek Engineering Record of Survey dated 3/5/84.

| ⊙ CURVE DATA | | |
|--------------|-------------|-------------|
| | No. 1 | No. 2 |
| ⊙ Radius | 200.00 | 200.00 |
| ⊙ Δ | 45° 00' 00" | 45° 00' 00" |
| ⊙ Arc Length | 157.08 | 157.08 |
| ⊙ Long Chord | 153.07 | 153.07 |

DWD SUBDIVISION - SHEET 2 OF 2

Umatilla County, Oregon

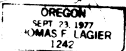
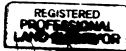
SURVEYORS CERTIFICATE

STATE OF OREGON)
COUNTY OF UMATILLA) 55

I, Thomas F. Lagier, being first duly sworn, do depose and say that I am a duly registered Land Surveyor of the State of Oregon, and that I have correctly surveyed and marked with legal monuments the land represented on the above Plat as follows:

Commencing at a 5/8" iron rod found at the Southeast corner of the Northeast 1/4 of Section 29, T5N, R29E, W.M.; thence N00°08'06"E along the East boundary of said Section 29, a distance of 408.30 feet; thence N89°27'02"W, a distance of 33.00 feet to the Initial Point;

- Thence N89°27'02"W, a distance of 287.00 feet;
 - Thence S00°08'06"E, a distance of 108.36 feet;
 - Thence N89°27'02"W, a distance of 658.20 feet;
 - Thence S00°32'58"W, a distance of 300.00 feet;
 - Thence N89°27'02"W, a distance of 30.00 feet;
 - Thence N00°32'58"E, a distance of 300.00 feet;
 - Thence N89°27'02"W, a distance of 650.70 feet;
 - Thence N00°06'31"W, a distance of 103.03 feet;
 - Thence S89°10'26"E, a distance of 1678.54 feet;
 - Thence S00°08'06"E, a distance of 896.57 feet;
 - Thence N89°27'02"W, a distance of 33.00 feet to the Initial Point.
- Said point being located N04°45'00"W, a distance of 410.00 feet from the Southeast corner of the Northeast 1/4 of said Section 29.



Thomas F. Lagier
Thomas F. Lagier P.L.S.

Subscribed and sworn before me this 13 day of April, 1984.

Notary Public for Oregon

My Commission expires 4 19 7

DEDICATION

STATE OF OREGON)
COUNTY OF UMATILLA) 55

Be it hereby known by these presents that the undersigned do hereby establish and acknowledge the accompanying plat as the official map and plat of DWD Subdivision to the County of Umatilla, Oregon, and that the undersigned owner of the land on the accompanying plat does hereby dedicate to the use of the public forever the streets and avenues designated on said plat and the utility easements as shown.

Donald C. DeMoss
Donald C. DeMoss

Wanda J. DeMoss
Wanda J. DeMoss

Be it remembered that on this 13 day of April, 1984, personally appeared before me Donald C. DeMoss and Wanda J. DeMoss, who are known to me to be the identical persons described in and who executed the above instrument and who acknowledged to me that they executed the same freely and voluntarily.

Thomas F. Lagier
Notary Public for Oregon, County of Umatilla

My Commission expires 4 19 7

APPROVALS

COUNTY SURVEYOR

I, David H. Krumbein, Umatilla County Surveyor, do hereby certify that I have carefully examined the accompanying plat of the DWD Subdivision, Umatilla County, Oregon, that it complies with the laws of the State of Oregon with reference to filing and recording of such plats and I therefore approve said plat for the approval of the County Court of Umatilla County, Oregon.

Dated this 27 day of April, 1984. David H. Krumbein
Umatilla County Surveyor

PLANNING COMMISSION

The accompanying plat is hereby approved by a vote of the undersigned and adopted this 13 day of April, 1984, and approval duly filed.

Chairman

HERMISTON IRRIGATION DISTRICT

The accompanying plat is hereby approved by resolution and adopted on this 13 day of APRIL, 1984 and approval duly filed.

Chairman

BOARD OF COMMISSIONERS

This is to certify that the accompanying plat is approved for filing and recording in the Record of Town Plats of Umatilla County, Oregon by the undersigned by its order dated this 3 day of May, 1984 and recorded in County Court Journal AR page 191.

Robert C. Egan
Chairman

William S. Hamaker
Commissioner

UMATILLA COUNTY ASSESSOR AND TAX COLLECTOR

I, James T. White Sr. and I, D.L. Bratt, respectively assessor and tax collector of Umatilla County, Oregon, each hereby certify that we have examined the tax records relative to the land covered by the accompanying plat, and that all monies due for state and county taxes and assessments that could now constitute a lien on said land have now been paid and we hereby approve said plat.

Dated this 12 day of April, 1984.

James T. White Sr.
Assessor

Edmund Bratt
Tax Collector

UMATILLA COUNTY CLERK

ATTEST: I, J. Dean Fouquette Sr., County Clerk of Umatilla County, Oregon, do hereby certify that the above named were on the date of said order above specified and are now the duly qualified, elected, sworn and acting chairman and commissioners of said county, that the signatures are the genuine signatures thereof and the seal hereto affixed is the seal of my office.

J. Dean Fouquette Sr.
County Clerk

