

# CHART SUBDIVISION

LOCATED IN THE NE 1/4 OF SECTION 1, TWP 4 N, R28E, W.M.  
UMATILLA COUNTY, OREGON

## DEDICATION

KNOW ALL MEN BY THESE PRESENTS THAT GEORGE HART, GERALD CHUN AND BEATRICE CHUN, BEING THE OWNERS OF THE LAND SHOWN ON THE ACCOMPANYING PLAT DO HEREBY DEDICATE TO THE USE OF THE PUBLIC FOREVER THE STREETS, ALLEYS, AND UTILITY EASEMENTS DESIGNATED ON SAID PLAT, AND DO HEREBY ESTABLISH AND ACKNOWLEDGE THE ACCOMPANYING AS THE OFFICIAL MAP AND PLAT OF "CHART SUBDIVISION."

*George Hart*  
GEORGE HART

*Gerald Chun*  
GERALD CHUN

*Beatrice Chun*  
BEATRICE CHUN

## ACKNOWLEDGEMENT

BEFORE ME ON THIS 30 DAY OF April, 1979, PERSONALLY APPEARED GEORGE HART, GERALD CHUN AND BEATRICE CHUN, TO ME PERSONALLY KNOWN TO BE THE IDENTICAL PERSONS WHO EXECUTED THE ABOVE DEDICATION AND WHO PERSONALLY ACKNOWLEDGED TO ME THAT THEY EXECUTED THE SAME FREELY AND VOLUNTARILY. SUBSCRIBED AND SWORN BEFORE ME THIS 30 DAY OF April, 1979.

*Alice B. Wright*  
NOTARY PUBLIC FOR THE STATE OF CALIFORNIA  
MY COMMISSION EXPIRES 7-25-81



## SURVEYOR

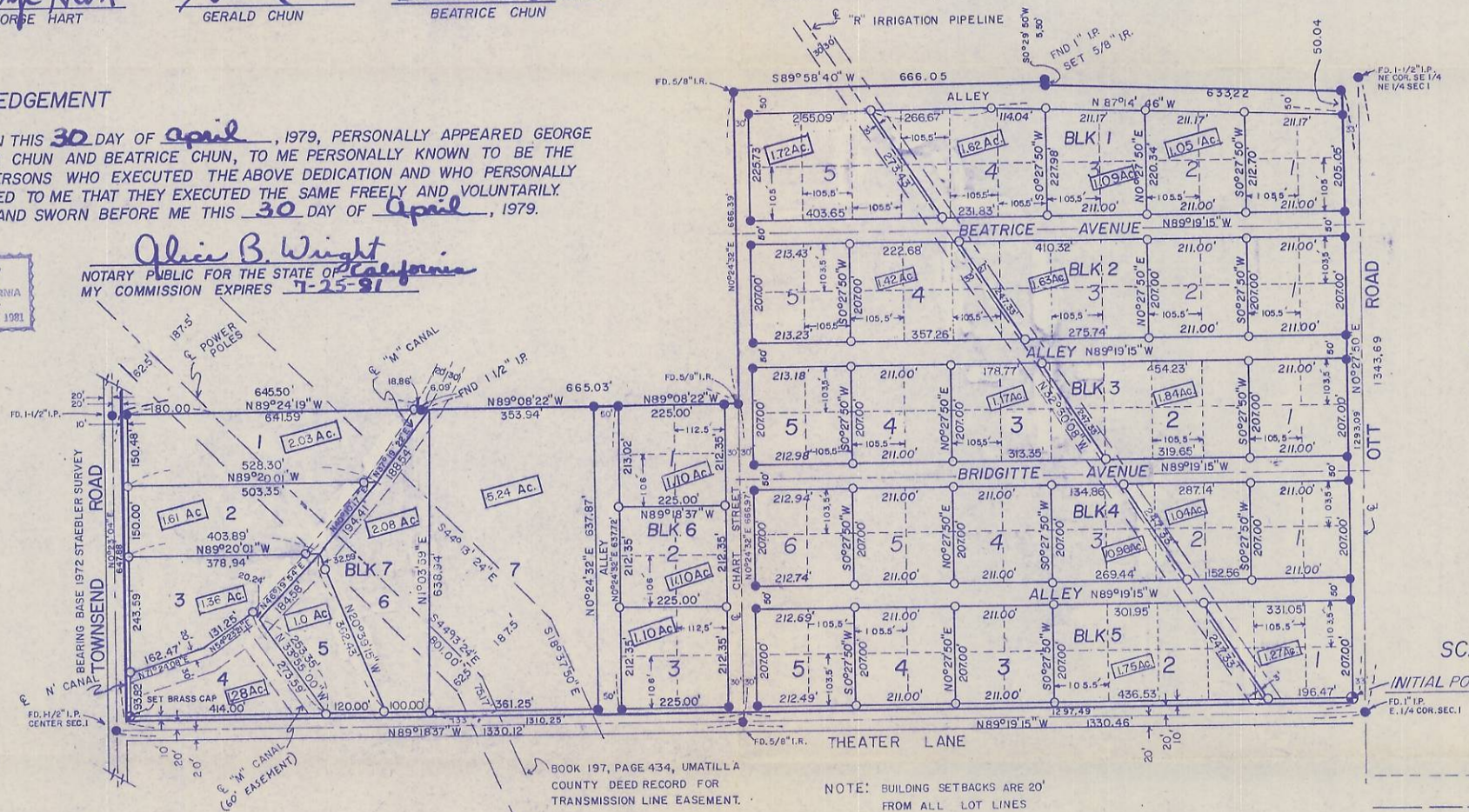
G. DENNIS EDWARDS  
EDWARDS SURVEYING  
HERMISTON, OREGON

DATE: DEC. 16, 1978  
REVISED: JAN. 17, 1980

## OWNER - SUBDIVIDER

GEORGE HART  
TORRANCE, CALIF

ALSO: GERALD CHUN AND  
BEATRICE CHUN



SCALE: 1" = 200'

NOTE: BUILDING SETBACKS ARE 20' FROM ALL LOT LINES

- DENOTES 10' UTILITY EASEMENT
- DENOTES CANAL, PIPELINE, & POWER EASEMENTS
- 1/2" x 24" IRON ROD
- 5/8" x 30" IRON ROD UNLESS OTHERWISE NOTED

RECEIVED BY  
Umatilla County Surveyor  
Date 5-13-80  
Rec'd By ELS  
No. R-2001-B



# CHART SUBDIVISION

## SURVEYOR'S CERTIFICATE

I, G. DENNIS EDWARDS, BEING FIRST DULY SWORN, DO DEPOSE AND SAY THAT I AM A DULY REGISTERED LAND SURVEYOR OF THE STATE OF OREGON, AND THAT I HAVE CORRECTLY SURVEYED AND MARKED WITH LEGAL MONUMENTS THE LAND REPRESENTED ON THE ACCOMPANYING PLAT, AT THE "INITIAL POINT" I SET A BRASS CAP IN CONCRETE 6 INCHES BELOW THE SURFACE OF THE GROUND AND LOCATED NORTH 47° 07' 33" WEST, 44.66 FEET FROM THE EAST 1/4 CORNER OF SECTION 1, TOWNSHIP 4 NORTH, RANGE 28 EAST, WILLAMETTE MERIDIAN, UMATILLA COUNTY OREGON.

BEGINNING AT THE INITIAL POINT DESCRIBED ABOVE AND RUNNING, THENCE NORTH 0° 27' 50" EAST ALONG THE WEST LINE OF OTT ROAD 1283.09 FEET, THENCE NORTH 87° 14' 46" WEST A DISTANCE OF 633.22 FEET; THENCE NORTH 0° 29' 50" EAST A DISTANCE OF 580 FEET TO THE SOUTHEAST CORNER OF THE SOUTHWEST 1/4 OF THE NORTHEAST 1/4 OF THE NORTH-EAST 1/4 OF SAID SECTION 1; THENCE SOUTH 89° 58' 40" WEST ALONG THE SOUTH LINE OF SAID SOUTHWEST 1/4 A DISTANCE OF 666.05 FT. TO THE \_\_\_\_\_ NORTHEAST CORNER OF THE NORTH HALF OF THE SOUTH-WEST 1/4 OF THE NORTHEAST 1/4 OF SAID SECTION 1; THENCE SOUTH 0° 24' 32" WEST ALONG THE EAST LINE OF SAID NORTH HALF A DISTANCE OF 666.39 FEET TO THE SOUTHEAST COR. OF SAID NORTH HALF; THENCE NORTH 89° 08' 22" WEST ALONG THE SOUTH LINE OF SAID NORTH HALF 665.03 FEET; THENCE CONTINUING ALONG SAID SOUTH LINE NORTH 89° 24' 19" WEST A DISTANCE OF 645.50 FEET TO THE EAST LINE OF TOWNSEND ROAD, THENCE SOUTH 0° 28' 04" WEST ALONG SAID EAST LINE A DISTANCE OF 647.88 FEET TO THE NORTH LINE OF THEATER LANE, THENCE SOUTH 89° 18' 37" EAST ALONG SAID NORTH LINE A DISTANCE OF 1310.25 FEET; THENCE CONTINUING ALONG SAID NORTH LINE SOUTH 89° 19' 15" EAST A DISTANCE OF 1297.49 FEET TO THE WEST LINE OF OTT ROAD, THENCE NORTH 0° 27' 50" EAST A DISTANCE OF 1000 FEET TO THE "INITIAL POINT."

ALL BEING IN COUNTY OF UMATILLA, STATE OF OREGON.

G. Dennis Edwards  
PROFESSIONAL LAND SURVEYOR NO 951  
STATE OF OREGON

SUBSCRIBED AND SWORN BEFORE ME THIS 22 DAY OF May, 1979.

David H. Klein  
NOTARY PUBLIC FOR THE STATE OF OREGON  
MY COMMISSION EXPIRES \_\_\_\_\_



## UMATILLA COUNTY SURVEYOR

I, David H. Klein, COUNTY SURVEYOR, DO HEREBY CERTIFY THAT I HAVE EXAMINED THE ACCOMPANYING PLAT OF "CHART SUBDIVISION", THAT IT COMPLIES WITH THE LAWS OF THE STATE OF OREGON WITH REFERENCE TO FILING AND RECORDING OF SUCH PLATS, AND I THEREFORE APPROVE SAID PLAT DATED THIS 2 DAY OF July, 1979.

David H. Klein  
COUNTY SURVEYOR

## UMATILLA COUNTY PLANNING COMMISSION

THE ACCOMPANYING PLAT IS HEREBY APPROVED BY RESOLUTION AND ADOPTED ON THIS \_\_\_\_\_ DAY OF \_\_\_\_\_, 1980, AND APPROVAL DULY FILED.

\_\_\_\_\_  
CHAIRMAN

\_\_\_\_\_  
SECRETARY

## APPROVALS

### UMATILLA COUNTY COMMISSION

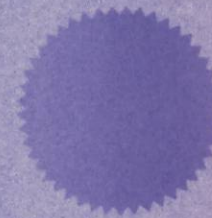
THIS IS TO CERTIFY THAT THE ACCOMPANYING PLAT IS APPROVED FOR FILING AND PLACED IN THE "RECORD OF TOWN PLATS" OF UMATILLA COUNTY, OREGON, BY THE UNDERSIGNED BY ITS ORDER DATED THIS \_\_\_\_\_ DAY OF \_\_\_\_\_, 1980, AND RECORDED IN THE COUNTY JOURNAL \_\_\_\_\_ PAGE \_\_\_\_\_.

Frank Smith CHAIRMAN      Ed Roberts COMMISSIONER      \_\_\_\_\_ COMMISSIONER

### UMATILLA COUNTY CLERK

ATTEST: I, W. J. [Signature], COUNTY CLERK OF UMATILLA COUNTY, OREGON DO HEREBY CERTIFY THAT THE ABOVE NAMED WERE ON THE DATE OF SAID ORDER ABOVE SPECIFIED AND ARE NOW THE DULY QUALIFIED, ELECTED, SWORN AND ACTING CHAIRMAN AND COMMISSIONERS OF SAID COUNTY; THAT THE ABOVE SIGNATURES ARE THE GENUINE SIGNATURES THEREOF AND THE SEAL HERETO AFFIXED IS THE SEAL OF MY OFFICE.

W. J. [Signature]  
COUNTY CLERK



### UMATILLA COUNTY ASSESSOR AND TAX COLLECTOR

I, James T. White AND I, \_\_\_\_\_, RESPECTIVELY ASSESSOR AND TAX COLLECTOR OF UMATILLA COUNTY, OREGON, EACH HEREBY CERTIFY THAT WE HAVE EXAMINED THE TAX RECORDS RELATIVE TO THE LAND COVERED BY THE ACCOMPANYING PLAT, AND THAT ALL MONIES DUE FOR STATE AND COUNTY TAXES AND ASSESSMENTS THAT COULD NOW CONSTITUTE A LIEN ON SAID LAND HAVE BEEN PAID AND WE HEREBY APPROVE SAID PLAT, DATED THIS \_\_\_\_\_ DAY OF \_\_\_\_\_, 1980.

James T. White COUNTY ASSESSOR      \_\_\_\_\_ COUNTY TAX COLLECTOR

### HEMISTON IRRIGATION DISTRICT

THE ACCOMPANYING PLAT IS HEREBY APPROVED BY RESOLUTION OF THE UNDERSIGNED'S BOARD OF DIRECTORS, ADOPTED THIS \_\_\_\_\_ DAY OF \_\_\_\_\_, 1980.

[Signature] CHAIRMAN      [Signature] SECRETARY



FILED IN  
Umatilla County, Oregon  
Date 5-23-80  
Filed by EXS  
No. R-2001-B