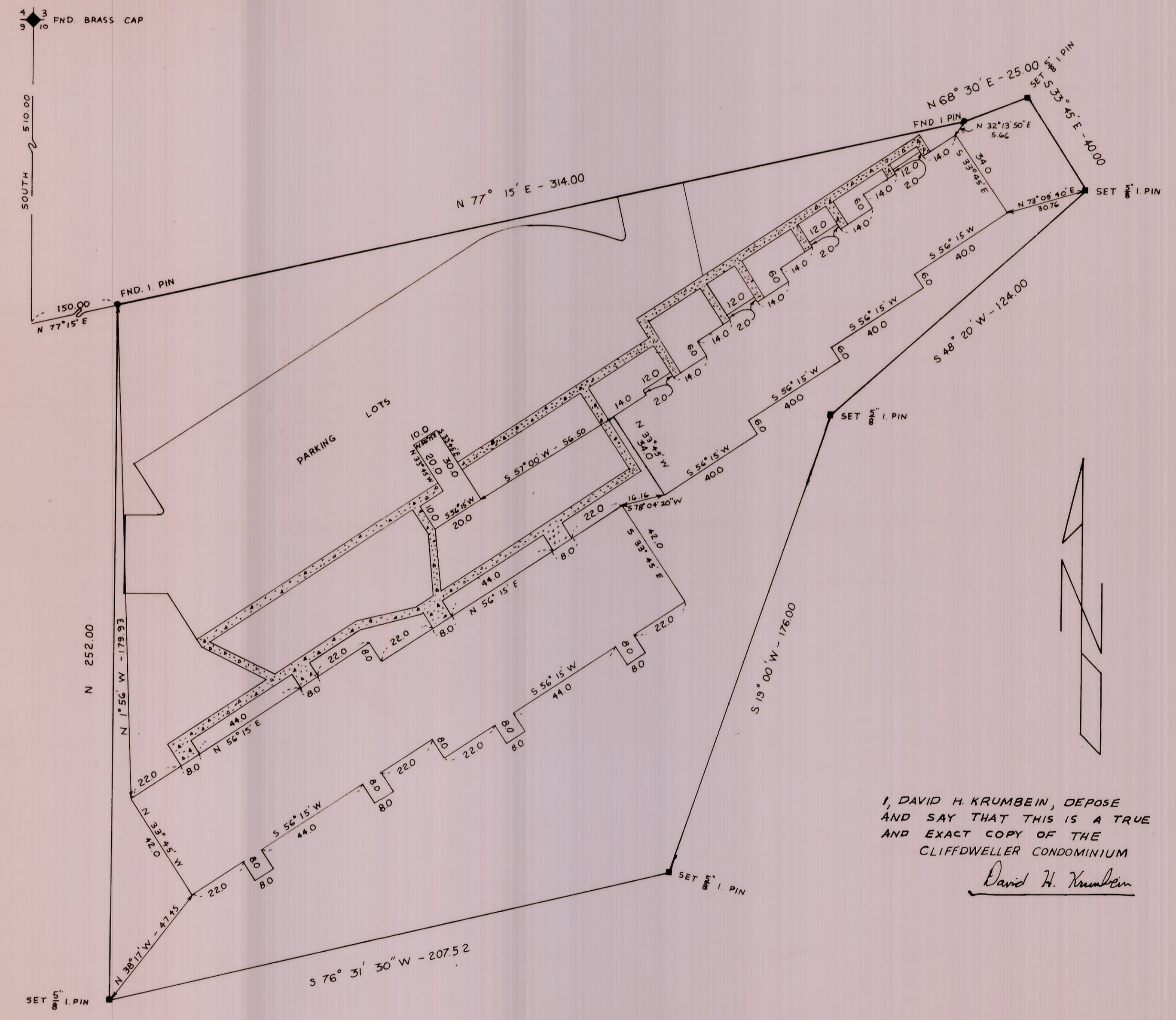


# CLIFFDWELLER CONDOMINIUM

SCALE 1" = 30' OCTOBER 29, 1973

T.2N, R.32E, W.M.



### LEGAL DESCRIPTION

COMMENCING AT THE NORTHWEST CORNER OF SECTION 10, TOWNSHIP 2 NORTH, RANGE 32 EAST OF THE WILLAMETTE MERIDIAN, THENCE SOUTH ALONG THE WEST LINE OF SAID SECTION 10 510.00 FEET; THENCE NORTH 77° 15' EAST 150.00 FEET TO THE TRUE POINT OF BEGINNING FOR THIS DESCRIPTION; THENCE CONTINUING NORTH 77° 15' EAST 314.00 FEET; THENCE NORTH 68° 30' EAST 25 FEET; THENCE SOUTH 33° 45' EAST 40.00 FEET; THENCE SOUTH 48° 20' WEST 124.00 FEET; THENCE SOUTH 19° 00' WEST 176.00 FEET; THENCE SOUTH 76° 31' 30\"/>

I, R.W. ESSELSTYN ASSESSOR AND I, D.L. BRATT TAX COLLECTOR OF UMATILLA COUNTY, DO HEREBY CERTIFY THAT WE HAVE EXAMINED THE TAX RECORDS RELATIVE TO THE LAND COVERED BY THE ACCOMPANYING PLAT AND THAT ALL MONEYS DUE FOR STATE AND COUNTY TAXES AND ASSESSMENTS THAT COULD NOW CONSTITUTE A LEIN ON SAID LAND HAVE BEEN PAID, AND WE HEREBY APPROVE OF SAID PLAT

DATE \_\_\_\_\_ 1973

*H.W. Esselstyn*  
*D.L. Bratt*



I, DAVID H. KRUMBEIN, DEPOSE AND SAY THAT THIS IS A TRUE AND EXACT COPY OF THE CLIFFDWELLER CONDOMINIUM  
*David H. Krumbein*

04-19-B