

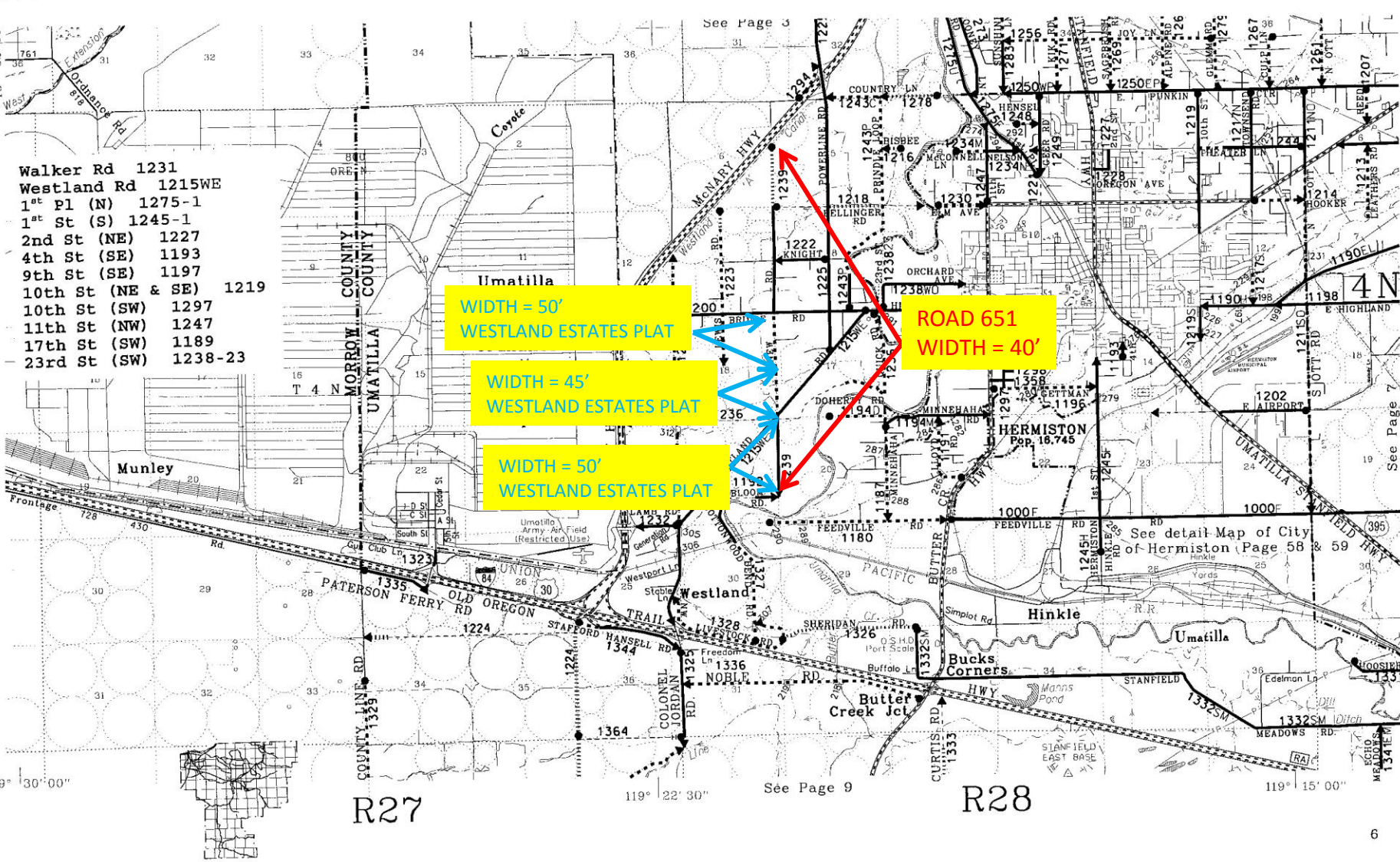
- Walker Rd 1231
- Westland Rd 1215WE
- 1<sup>st</sup> Pl (N) 1275-1
- 1<sup>st</sup> St (S) 1245-1
- 2nd St (NE) 1227
- 4th St (SE) 1193
- 9th St (SE) 1197
- 10th St (NE & SE) 1219
- 10th St (SW) 1297
- 11th St (NW) 1247
- 17th St (SW) 1189
- 23rd St (SW) 1238-23

WIDTH = 50'  
WESTLAND ESTATES PLAT

WIDTH = 45'  
WESTLAND ESTATES PLAT

WIDTH = 50'  
WESTLAND ESTATES PLAT

ROAD 651  
WIDTH = 40'



R27

R28