

TIE DIST. = 39.03'  
 BRG. = N 50° 58' 56" W

1/16 CORNER

T.L. 2702  
 D.R. R.37, PG.1080

*Waccation*

D.  
Pl

L. 800  
V.R. VOL. 317, PG. 21  
V.B. VOL. 10 PG. 5

STA 13+49.97

STA 16+31.08

589°2'42" W

281.11'

40' RW

280.77'

281.44'

N89°49'24" W

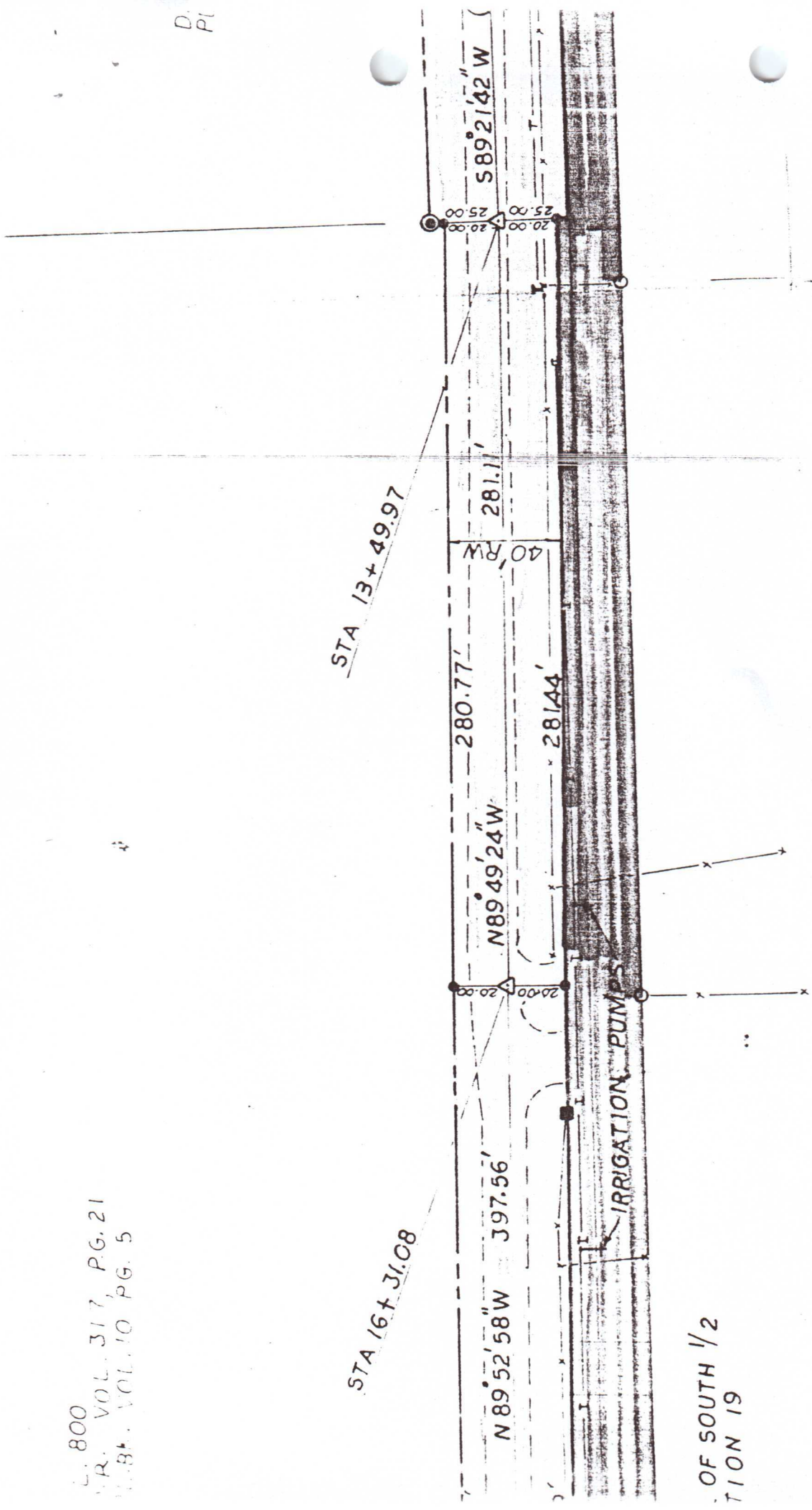
N 89°52'58" W 397.56'

IRRIGATION PUMPS

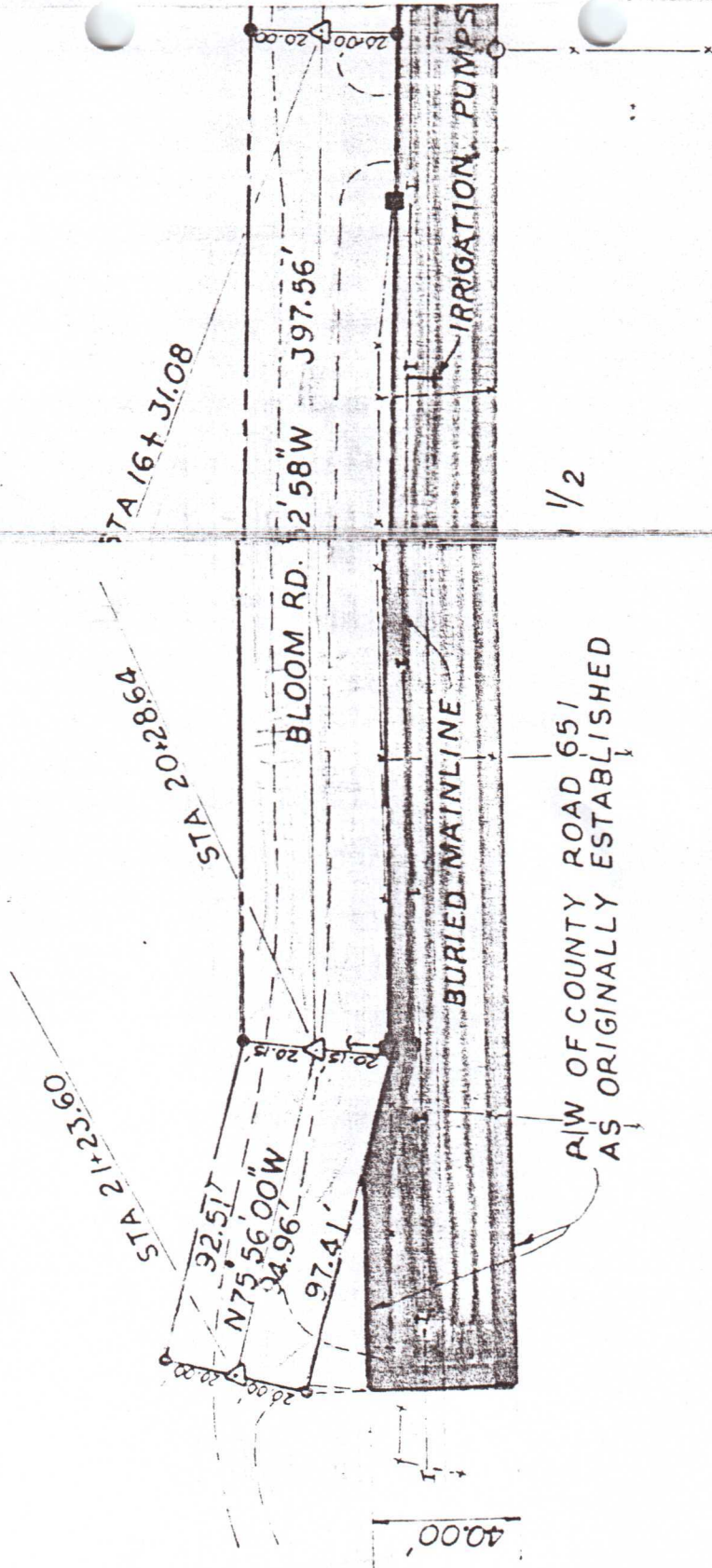
OF SOUTH 1/2  
TION 19

T.L. 2703  
D.R. R246, PG. 625

18, PG. 1341



T.L. 317, PG. 21  
O.L. 10 PG. 5



T.L. 2700  
D.R. R.37, PG. 1080