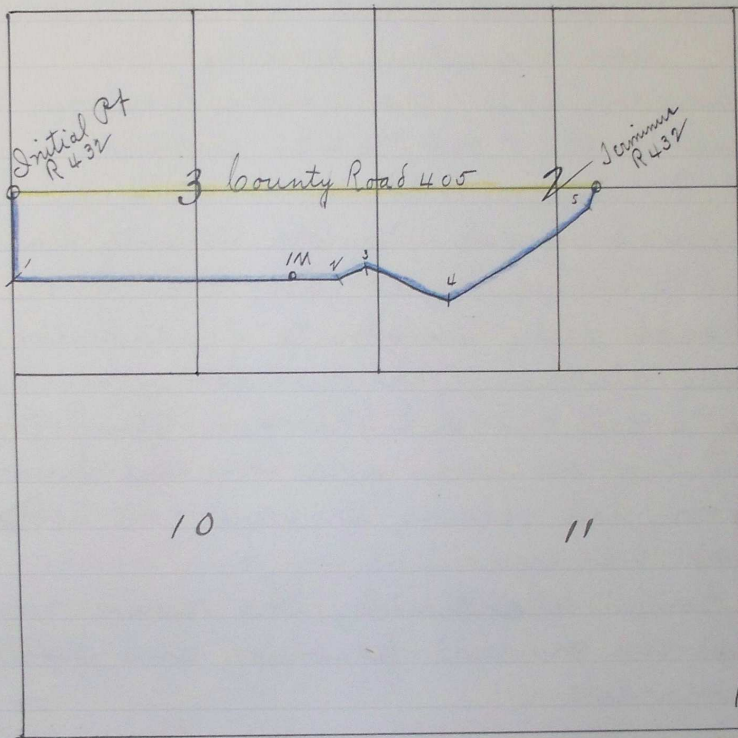


# Plat of Road Survey No 432

I hereby certify the following to be a correct  
Plat of the Survey of Road 432. Sp 32R 36 SWM.  
as made by me, Oct 24<sup>th</sup> 1893.

John G. Arnold.  
Surveyor of Umatilla  
County Oregon.



Filed. January 2<sup>nd</sup> 1894 }  
W.M.P. Clerk }

2607

Umatilla  
 ett and  
 inister  
 Road  
 directed  
 n were  
 ualified,  
 link North  
 from said  
 asend  
 lks dist,  
 a,  
 lter timber,  
 ce  
 om shence  
 Muirheads, Res  
 of lane  
 ce. I run  
 lks  
 SW of  
 ction  
 lly marked  
 lild notes  
 S  
 cor.