

Course

Dist

West

chs
32.10

Probable center of Sec. 6 T. 3 N. R. 37 E. and therefore the terminus of Road 388.

Cut R 388 on E. side of a white fir, 6 ins. dia. 20 lks. N. of line, on gentle west slope.

This road lies almost wholly in thick brush and timber - the line of survey is well marked by blazed trees, angle and mile posts, all of which are of the size, and, are marked and set in mounds as required by law.

Shirley certify that the foregoing are the correct field notes of road survey No. 388, for Umatilla County, Oregon.

Filed July 13 1890

W.M. Pierce Clerk

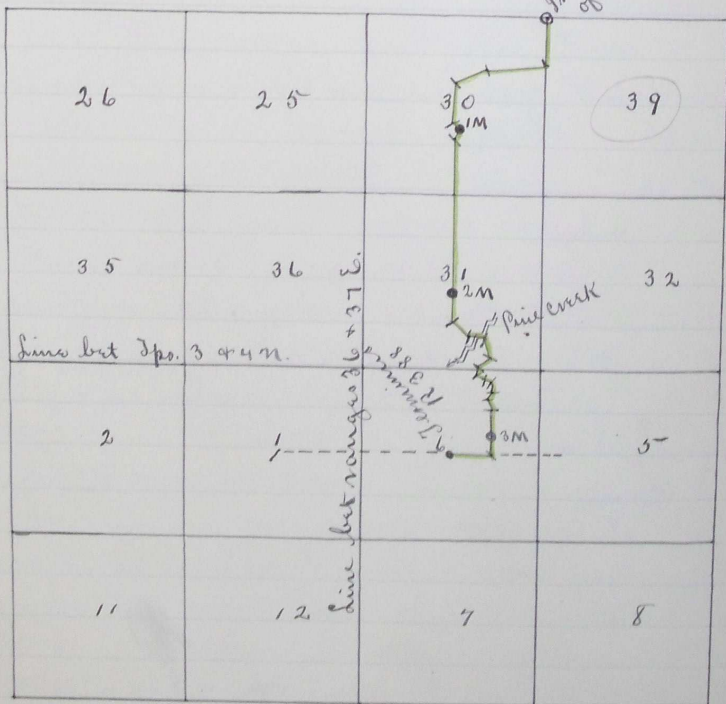
Jno. C. Arnold, County Surveyor.

Plat of Road No 388

Shirley certify the following to be a correct plat of the road survey 388 Townships 3 + 4 N Range 37 East of Willamette meridian made by me June 2nd + 3rd 1892

Jno. C. Arnold

Surveyor for Umatilla County Oregon.



Filed July 13 1892

W.M. Pierce Clerk

ROAD NO
388

Sm
con
com
of th
is 14
12 a
gate
Sec
170
13 2
SW
mil
abo
4 N
in
rod
con
and
the
111
Jo
Ore
We
- bor
the
Hon
- ver
his
disc
we
who
sur
in c
settl
is ap
that it
witness
Filed Ju