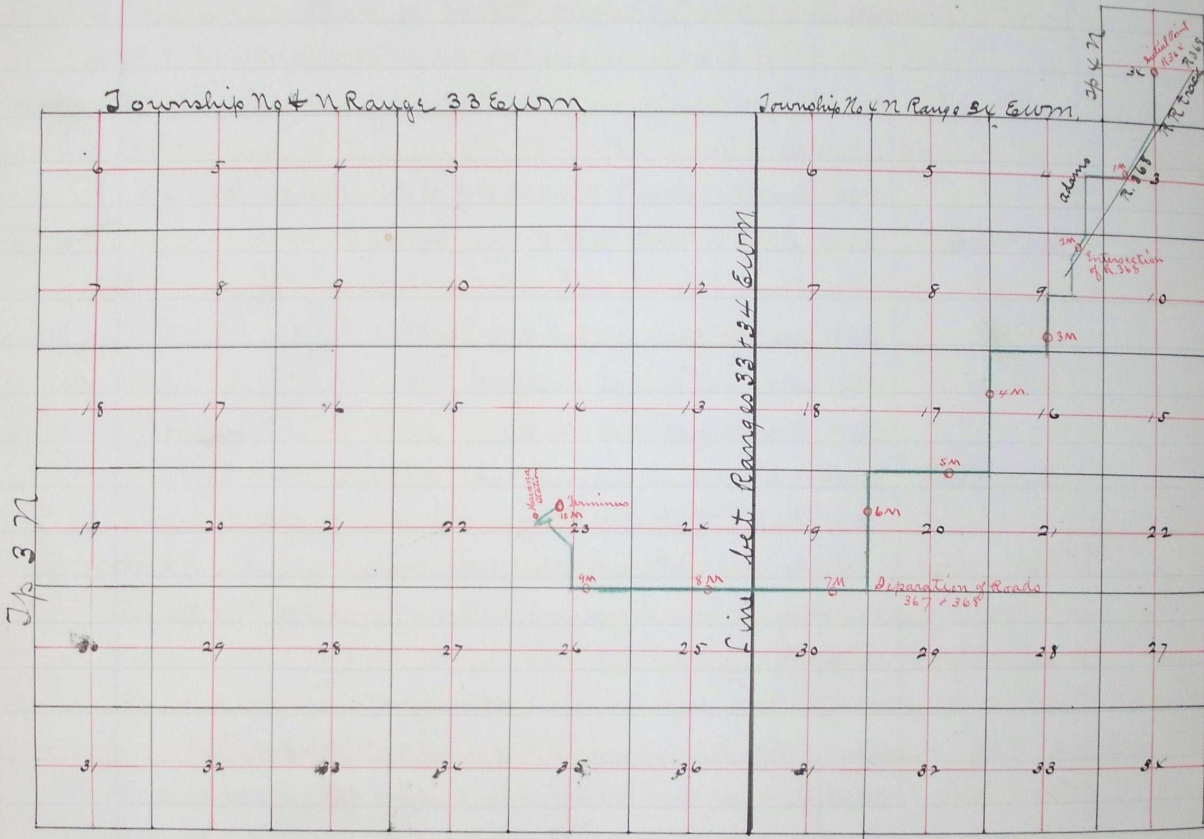


indicated by an ordinary magnetic needle, at each station.
 I hereby certify that the foregoing are the correct
 field notes of Road Survey No 367 for Umatilla Co. Oregon.
 Filed Sept 8th 1891
 W. M. Pierce Clerk.

ROAD NO
 370.

Jno. C. Arnold
 Co. Surveyor.

Plat of Road Survey No 367 for Umatilla Co. Oregon



JP 37

I hereby certify that the foregoing is an accurate plat
 of Road Survey No 367 for Umatilla Co. Oregon
 Jno. C. Arnold
 Co. Surveyor.

Filed Sept. 8th 1891
 W. M. Pierce Clerk.

11765