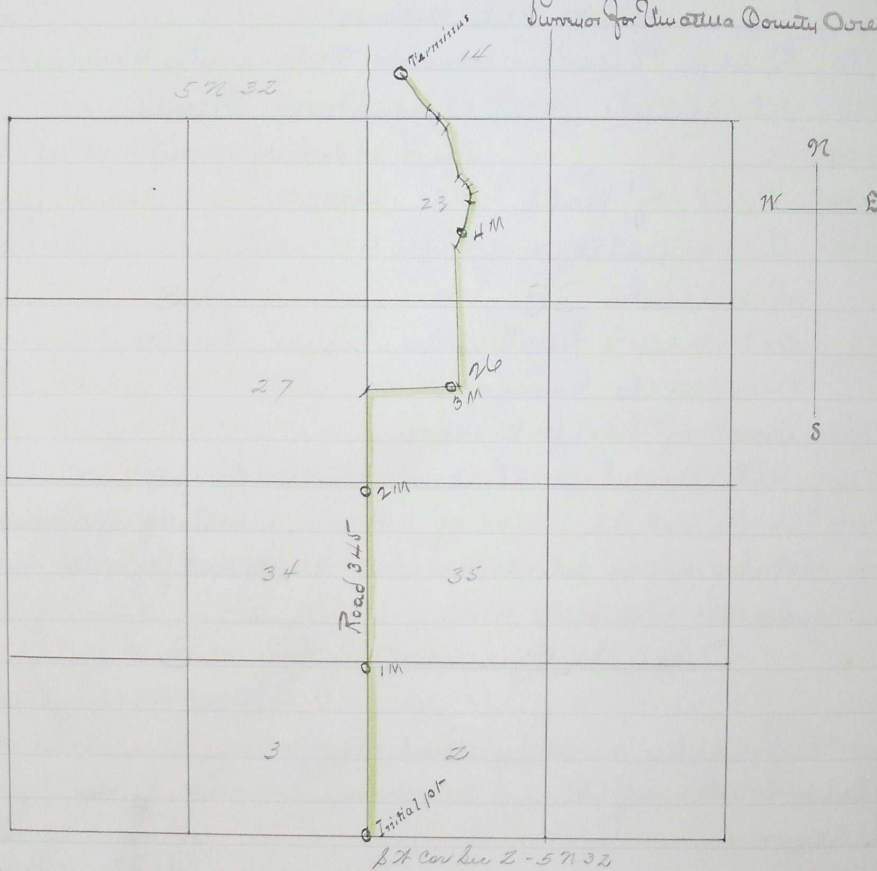


Plat of Road 345

I hereby certify the following to be a correct plat of the survey of Road 345 Township 5 N. Range 32 E W. M. as made by me Aug 5th 1890

Geo Arnold
Surveyor for Multnomah County Oregon



Filed Aug 13th 1890
W. W. Clark

340 x 1690 to 595

Al
ro
co
ya
for
so
5 N
50
El
ea
on
of
re
ju

In
Ro
So
for
he
su
B
Geo
H
fre
we

wh
and
we
we
be d

File
W. M.