

- 4750 Descend gently
- 4566 Cor for 1/4 Sec bet Secs 19-30 Set angle post at cor and turn on line bet Secs 19 & 30
- East 5780 Set 2 mile post 30 South of line
- 500 Ascend gently
- 1888 Runce N.T.S.
- 1999 Cor for Secs 19-20-29 & 30 Set angle post at cor and turn on line bet Secs 29 & 30
- 2579 Set angle post by E side of log fence and ~~there~~ there
- 576° 30' E. 3369 Intersect Basket Mountain Road NW & SE Set terminus 40 ft north of line.

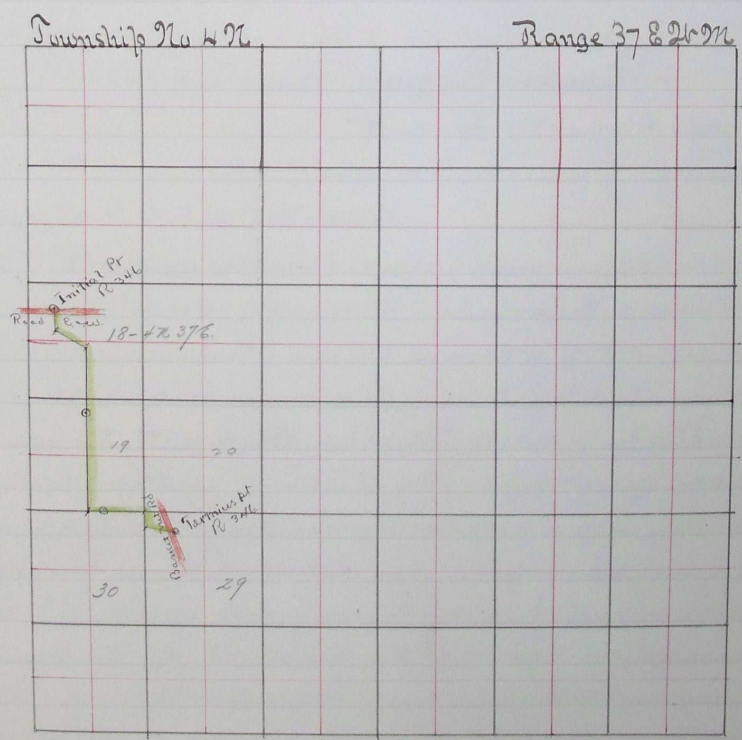
I hereby certify that the foregoing are the correct Field Notes of Road Survey No 346 for Multnomah County Oregon.

Jno C. Arnold
Surveyor.

Filed Aug 19-1890 }
W.M. Pierce Clerk }

I hereby certify that the following is a correct plat of Road Survey No 346 for Multnomah Co Oregon

Jno C. Arnold
Surveyor.



Filed Aug 19-1890 }
W.M. Pierce Clerk }

448 16 90 At 596