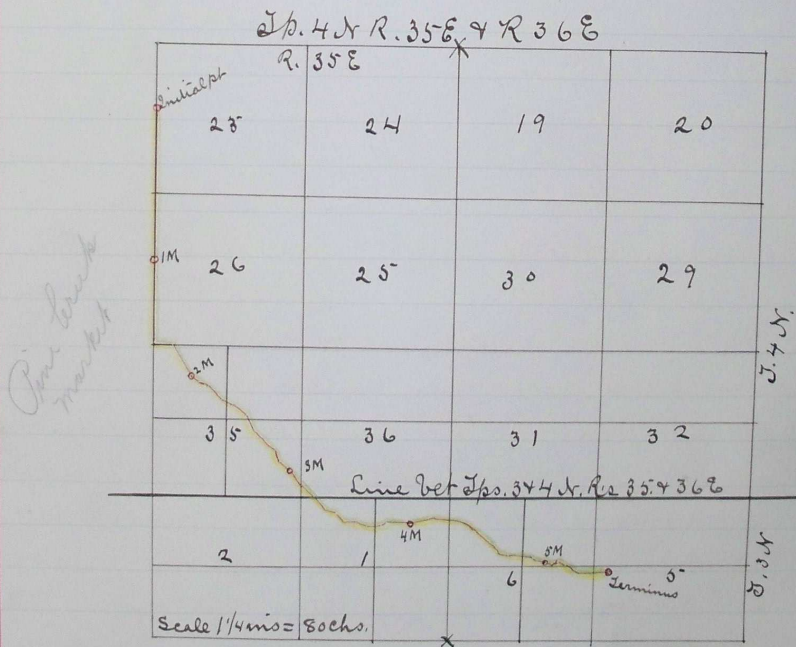


- N 61° 30' E 560 Cut A on pine tree 12 ins dia. at pt. ^{and} turn
- S 68° 15' E 956 " " " " " (small tree) " " " "
- S 66° 00' E 1068 " " " " " 20" dia. at pt. a fence runs E. & W. purporting to be on true line E. & W. through center Sec. 65, 3 N. R 36 E.
- " 1120 Cut A on small pine, about 12' west of point ^{and} turn East 40 ft. south of fence described, ^{and} on course parallel to same
- East 1883 Intersect line bet. Secs. 5 & 6, 40' south of 1/4 Sec. cor. on said line.
- 2083 Cut R on west side of large pine stump in center of lane course E. & W.

I hereby certify that the foregoing Field Notes of Road Survey No. 296 for Umatilla Co., Or. are correct.

Jno. C. Arnold,
Surveyor.

Plat of Road Survey No. 296. Umatilla Co., Or.



Journal p. page 5764
 " 4 " 684
 " 4 " 7044

Road Granted Jan'y 9th 1888
 Recorded Jan'y 19th 1888
 G. A. Hartman
 Clerk
 By J. H. Parkes, Deputy

I hereby certify the foregoing
 plat of Road Survey No 296 for Umatilla Co., Or. to be correct
 Jno C. Arnold,
 Surveyor