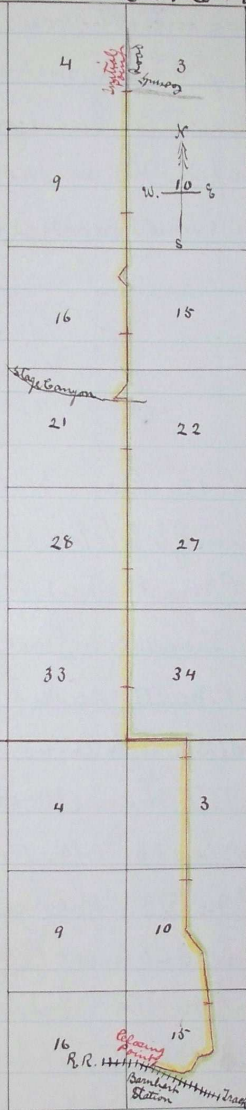


Plat of Road N<sup>o</sup> 248

Tp 3. N. R 31 E. W. m



Tp 2 N.

R 31 E. W. m.

Scale 1 inch to the mile

Journal G. page 40

.. G. .. 75

Recorded July 20<sup>th</sup> 1885

J.P. Bushu  
County Clerk.

I hereby certify this to be a true plat  
of Road N<sup>o</sup> 248.

Surveyed June 1<sup>st</sup> 1885

By W.W. Caviness