

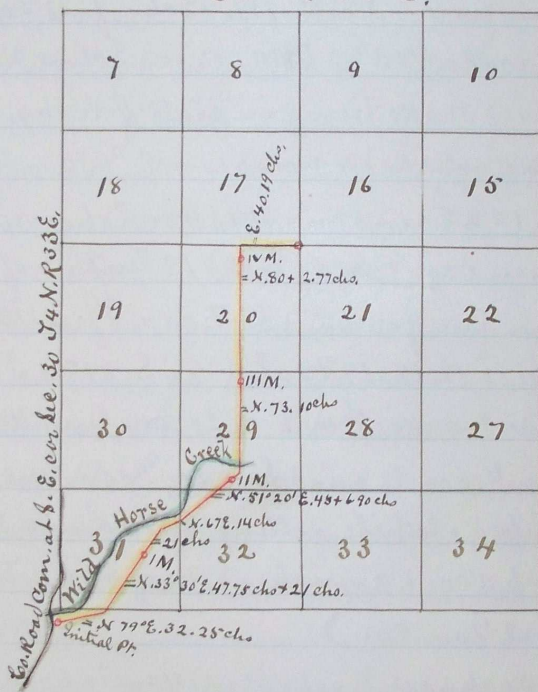
160

2d #245

Plat of County Road
 Leading up Wild Horse Creek,
 from crossing of same by County road
 leading southward from
 S.E. cor. Sec. 30 T. 4 N. R. 33. E 7c.

Scale 80chs = 1 inch

T. 3 N. R. 33. E.



Jno. C. Arnold,
 Suror.

Journal F. page 685.

Recorded Feby 5th 1885

J.P. Bushie

Clerk.