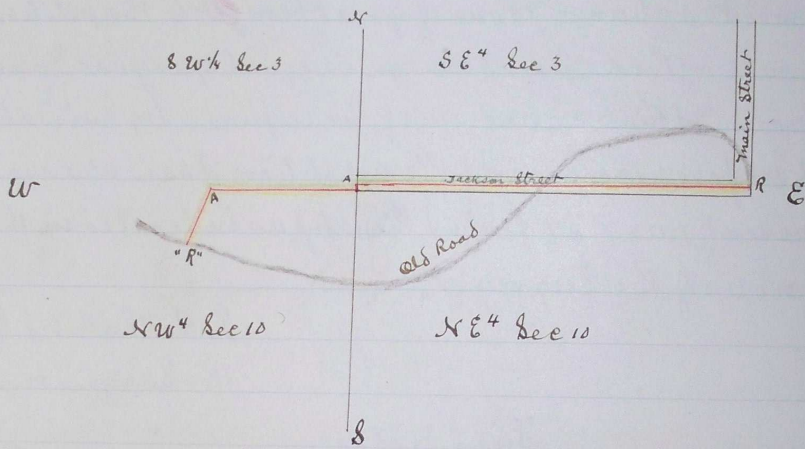


Plat of Road N^o 188.

ROAD No
182.

To Hon County Court Umatilla County Or
I hereby submit the following as a true plat of the proposed
change in County Road, leading from the 23 mile post to Town of Pendleton



Red line indicates line of proposed change.

I hereby certify that the above correctly indicates the relative
location of the two routes.

J H Raley
Surveyor

Journal F. page 307 &

" F. " 378.

Recorded May 10 1884

J P Bushie Clerk.