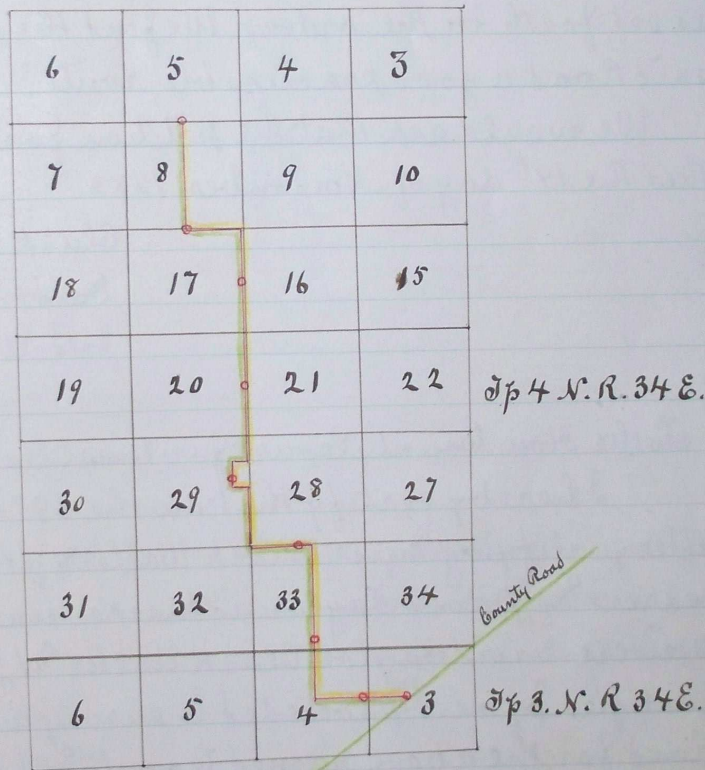


By D. D. East Notary Public, I proceeded to Survey of a County road for the above County & State as described in the accompanying field notes of Survey.

Commencing at the 1/4 Sec post between Sec's 5th & 8th T^p 4 N. R 34 E. running South 80 chains to the 1/4 Sec post between 8 & 17. East 40 chains to the corners of Secs 8. 9. 16. 17. South 180 chains. West 3 chains. South 20 chains. East 3 chains. South 40 chains. East 40 chains. South 120 chains. East 64 chains to the County Road leading from Pendleton to Centerville along Wild Horse Creek in Umatilla Co. Oregon.
W. W. Caviness. Dept Surveyor



Plat of Sand Hollow Road to the Town of Adams.
W. W. Caviness,
Surveyor

Journal F. page 69
" F " 224
Recorded Feby 8th 1884

J. P. Bushee Clerk.