

to terminus of road and set post marked R at 38 Miles

Rd = 97 Post on State Line.

Length of Road 2 Miles 28 Chains.

I hereby certify that the above notes and attached Plot are correct.

J. R. Kaley Co. Surveyor  
By Geo. W. Reading Deputy

mrs

"

"

"

"

"

"

"

"

"

"

"

"

"

"

"

"

"

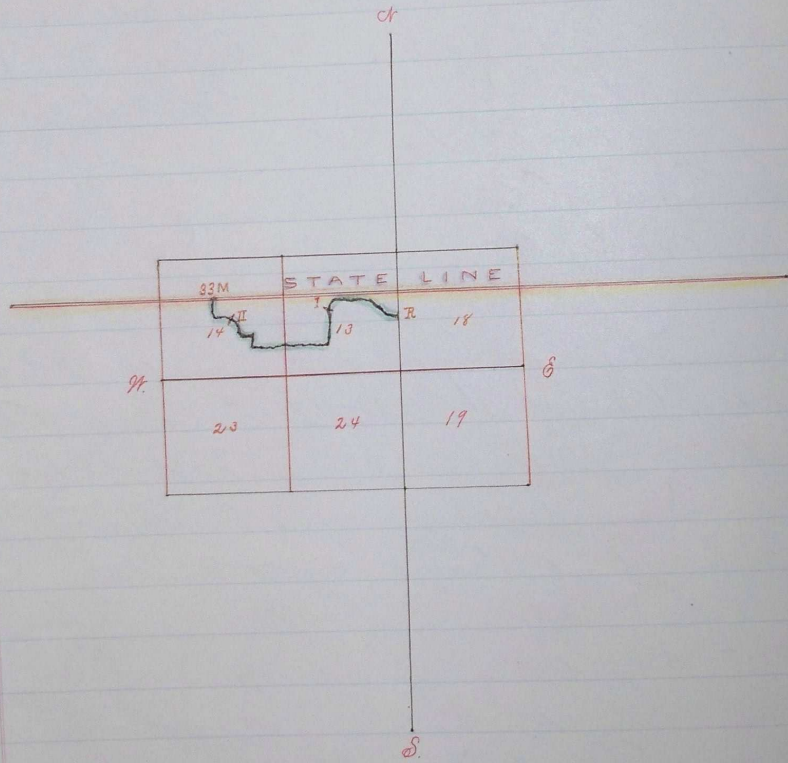
"

"

"

"

"



Journal of pages 202 & 285