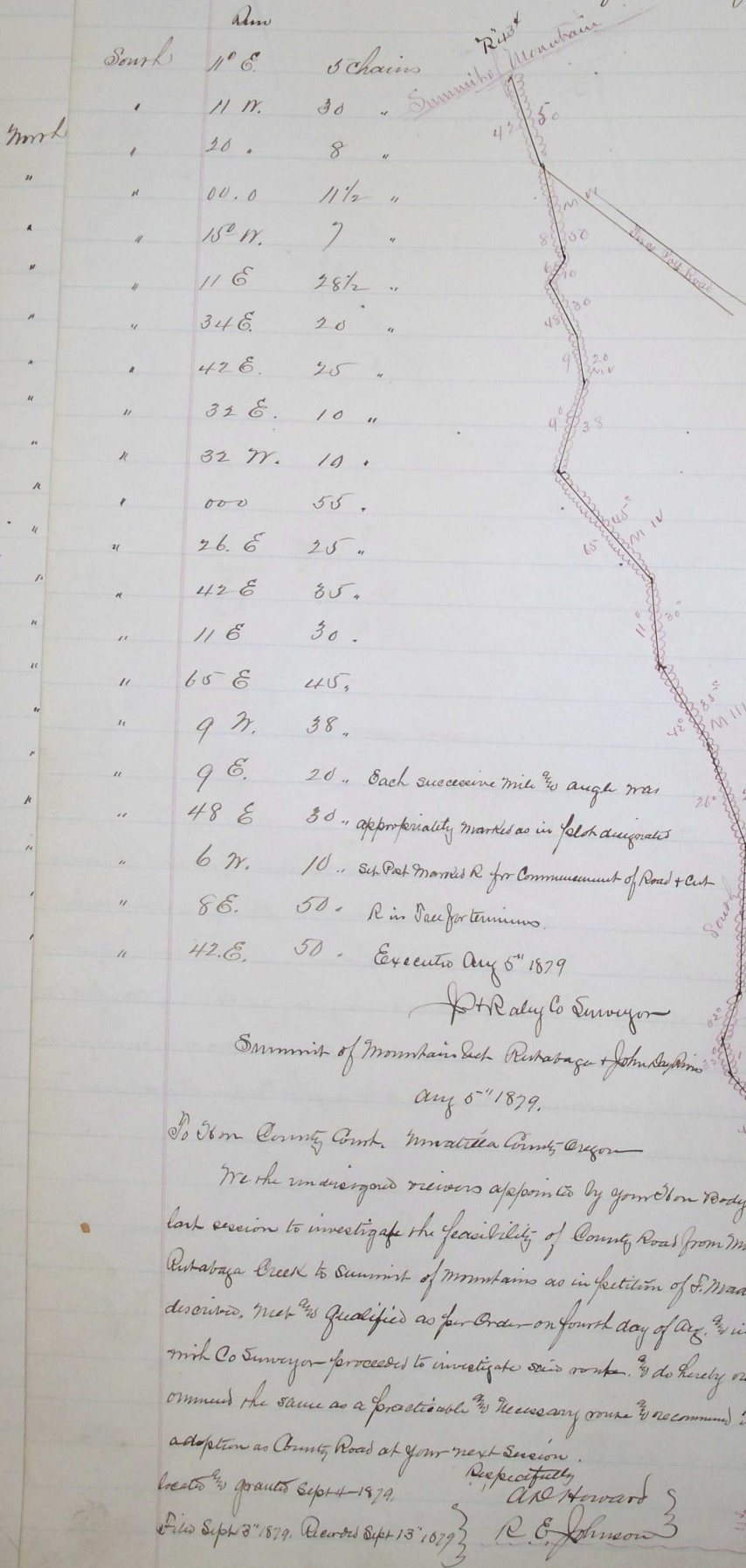


Report. Plat. & field Notes of Co Road from Mouth of Rutabaga Creek to Summit of Mountain

Set Post marked R. at Mouth of Rutabaga for Commencement.



Dist	Bearing	Chains	Notes
11 N.	11° E	30	
20	30	8	
00.0	11 1/2		
18° W.	11° E	7	
11 E	34 E	28 1/2	
34 E	42 E	20	
42 E	31 E	25	
31 E	32 W.	10	
32 W.	000	10	
000	26 E	55	
26 E	42 E	25	
42 E	11 E	35	
11 E	65 E	30	
65 E	9 N.	45	
9 N.	9 E.	38	
9 E.	48 E	20	Each successive mile to angle was
48 E	6 N.	30	appropriately marked as in field diagrams
6 N.	8 E.	10	Set Post marked R. for Commencement of Road + Cut
8 E.	42 E.	50	R in line for terminus.
42 E.		50	Executed Aug 5 <sup>th</sup> 1879

J. H. Daly Co Surveyor

Summit of Mountain bet Rutabaga + John Stephens Aug 5<sup>th</sup> 1879.

To Hon County Com. Multnomah County Oregon

We the undersigned receivers appointed by your Hon Body at last session to investigate the feasibility of County Road from Mouth of Rutabaga Creek to Summit of Mountains as in petition of S. Madson described. met this qualified as per Order on fourth day of Aug. in company with Co Surveyor proceeded to investigate said route. & do hereby recommend the same as a practicable & necessary course & recommend its adoption as County Road at your next session.

Respectfully  
 W. H. Howard }  
 R. E. Johnson }

Journal 10,389

Plat #74

Cont

S. 40

S. 35

S. 64

S. 40

East

South

S. 67

S. 67

S. 79

S. 69

S. 42

S. 8

S. 6

N. 70

N. 70

S. 80

N. 6

N. 5

N. 8

N. 6

N. 6

S. 8

S. 5

S. 68

S. 6

S. 70

S. 65

S. 53

N. 79

N. 60

N. 80

N. 50

S. 80

S. 58