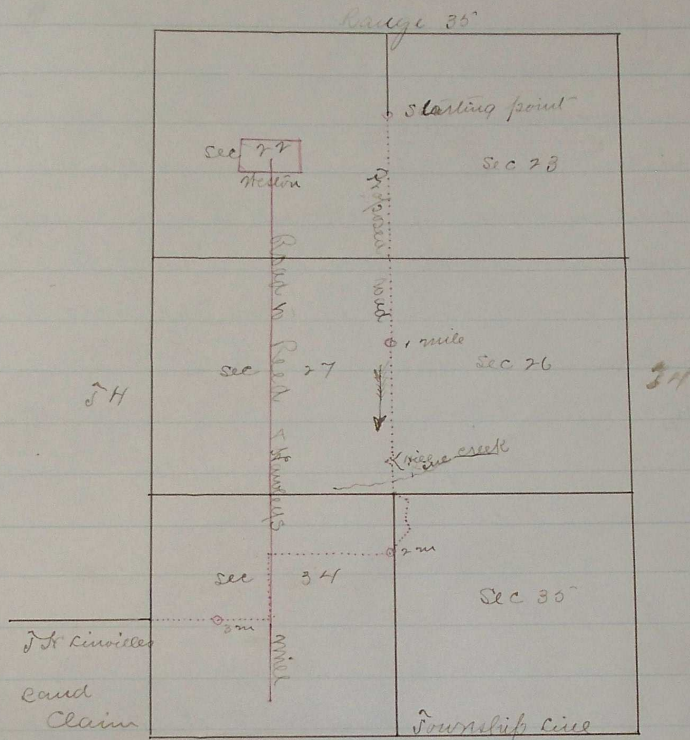


Plat of Road from 170 R. S. of N.W. cor. Sec. 23 T. 44 N. R. 35 E.

Rd # 28

JH

J. H. Linville's Land Claim



I certify that the above is a ~~correct~~ plat of the road as surveyed by me from a point 170 rods South of N.W. corner Sec 23 T. 44 N. R. 35 E. to the N.E. corner of J. H. Linville's preemption claim

J. H. Sharon
Co. Surveyor
Umatilla Co.
Oregon.

Road granted and located July 5th 1873
See Co. Court Journal "B" page 337