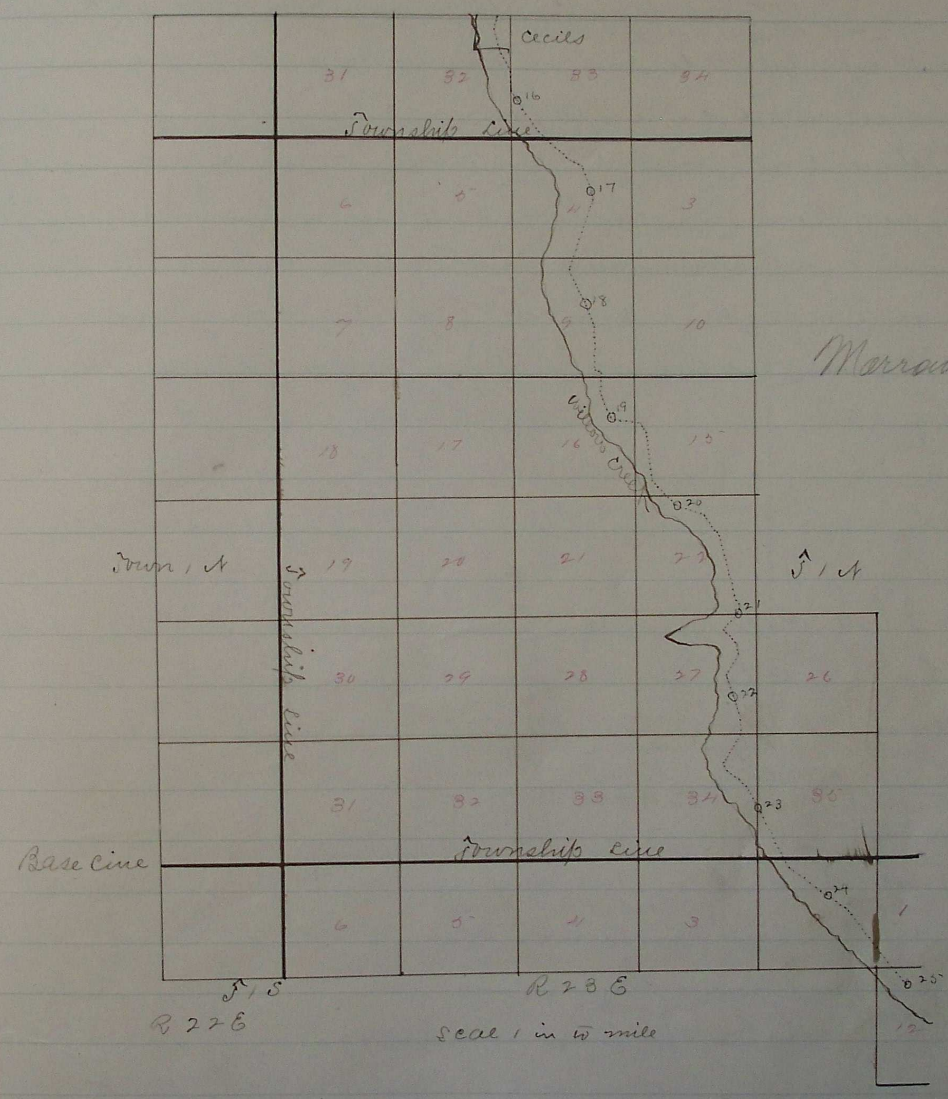


Plat of Road from Mouth of Willow Cr.

to

Intersect Road from Pilot Rock to Scotts Station

(continued)



I hereby certify that the accompanying is a correct plat of the cr road from the mouth of Willow creek up said creek to intersect the cr Road from Pilot Rock to Scotts Station

J. H. Sharon
cr Surveyor

Road granted and located July 25th 1873
See Co. Court Journal to page 337