

ALSO SEE SURVEYS 03-021-C, 03-023-C, 12-031-S; CORNER RECORDS; G.L.O. SURVEYS

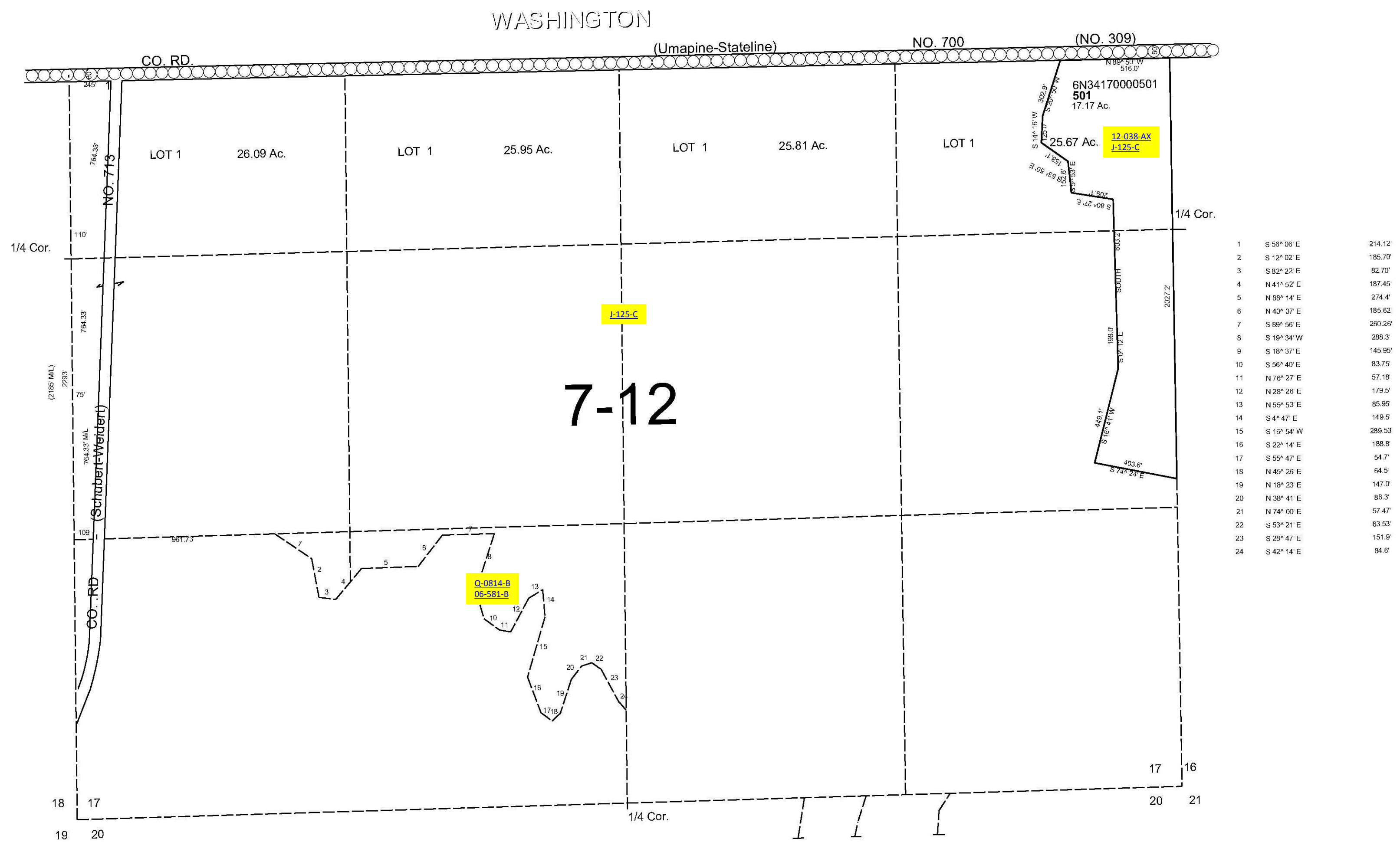
This map was prepared
for assessment purposes

SEC 17 T6N R34E WM UMATILLA COUNTY

5/4/06

6N 34 17
DETAIL MAP
AERIAL PHOTO NO. NZ 6P-26

SCALE 1"=400'



6N 34 17