

ALSO SEE SURVEYS 03-023-C, 12-029-C, CORNER RECORDS; G.L.O. SURVEYS

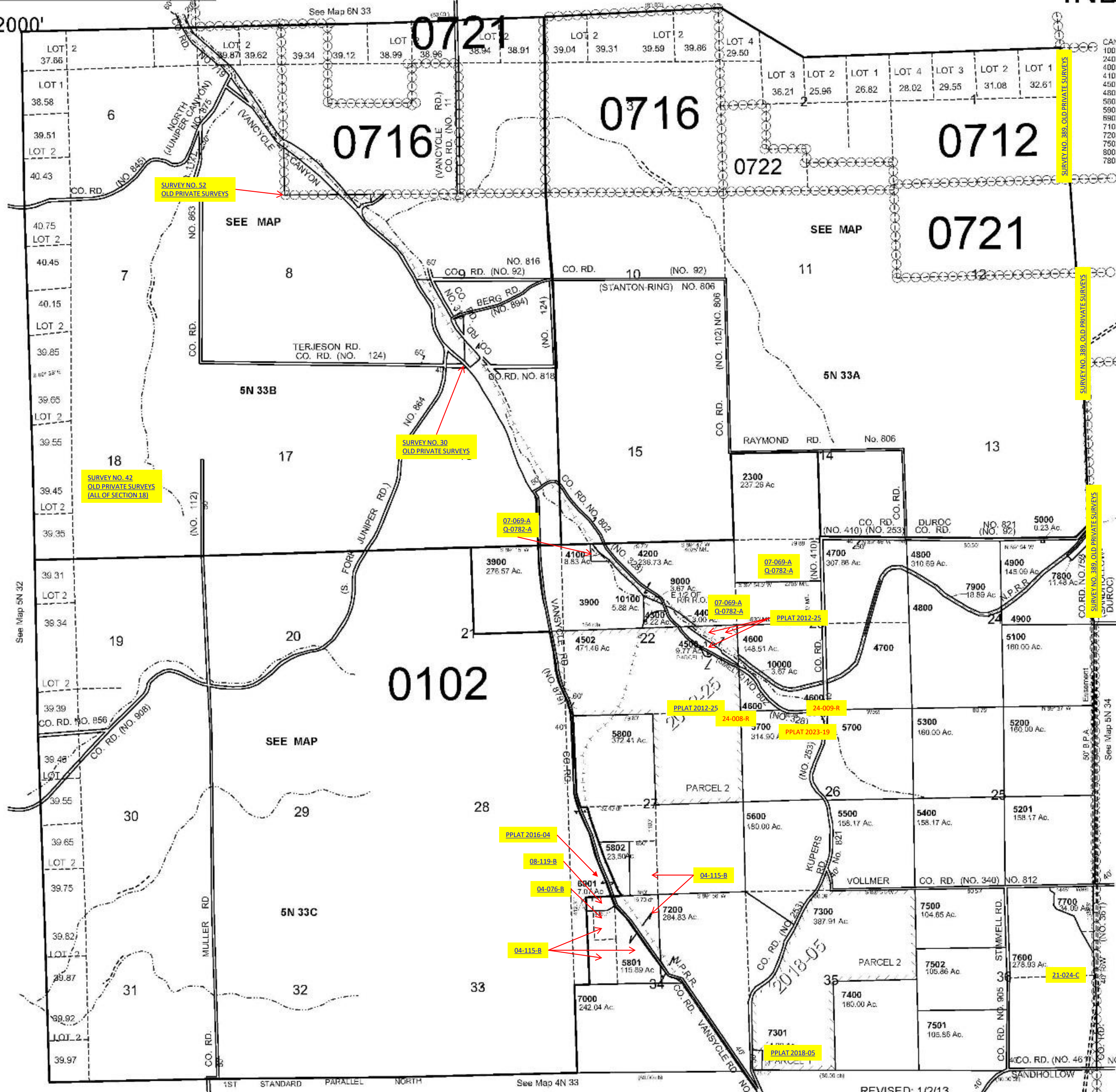
This map was prepared for Assessment & Taxation purposes only and was NOT prepared nor is it suitable for legal, engineering or surveying purposes.

T5N R33E WM UMATILLA COUNTY

AERIAL PHOTO NO. NZ 5P 28-33, 6P 86-90 & 103-107

5N 33 & INDEX

1"=2000'



CANCELLED NOS.
100 thru 2200
2400 thru 3800
4000
4100
4901
4800
5003
5900 thru 6900
8907
7100
7200
7502
8000
7800 A1

Revised: 05-29-18
NO. 825

REVISED: 1/2/13

5N 33