

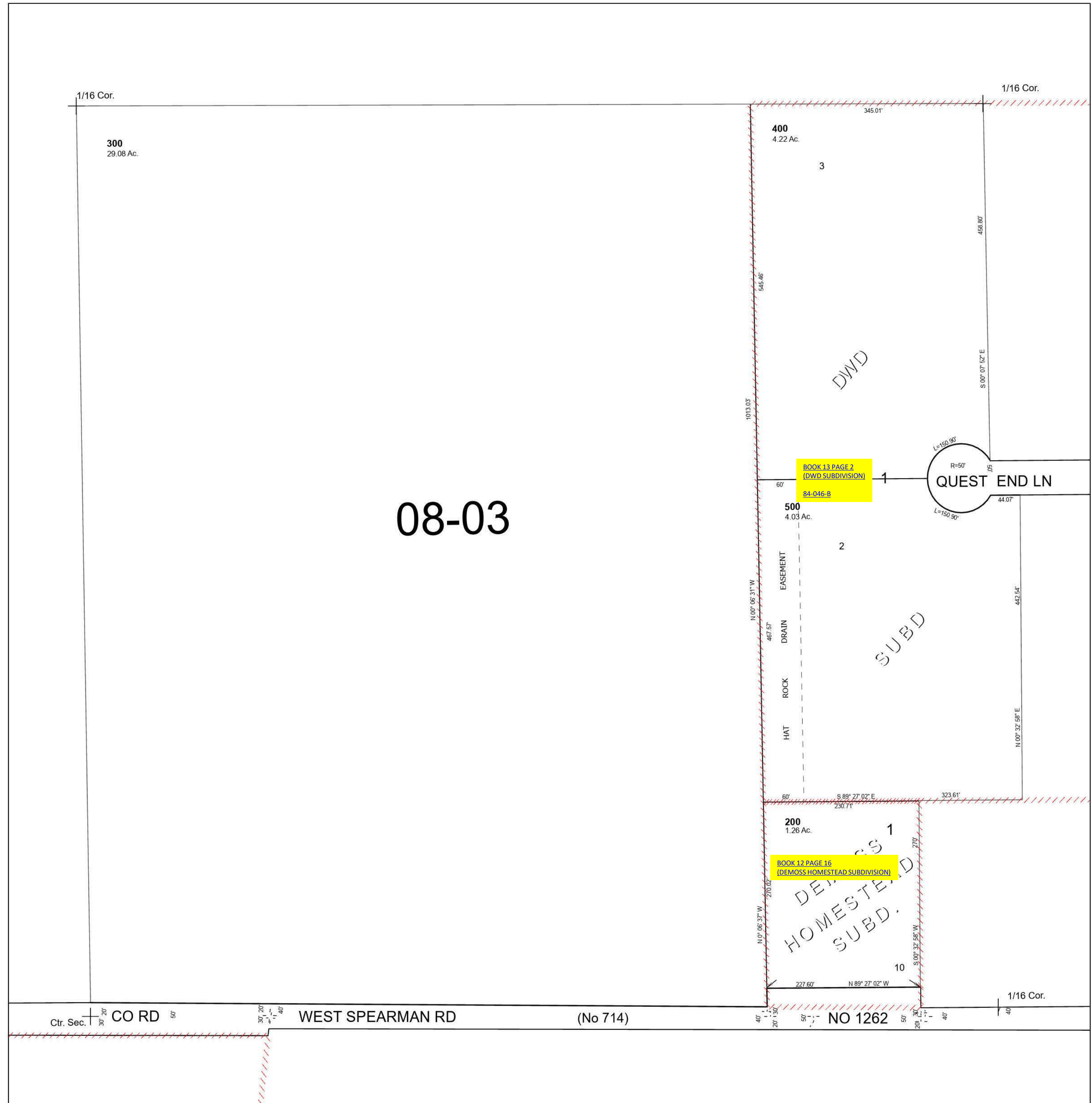
This map was prepared for Assessment & Taxation purposes only and was NOT prepared nor is it suitable for legal, engineering or surveying purposes.

Cancelled Tax Lots
100

SW 1/4 NE 1/4 SEC 29 T5N R29E WM UMATILLA COUNTY SCALE 1" = 100'

See Map 5N 29

5N 29 29AC



See Map 5N 29

See Map 5N 29 29AC

Revised 11/9/2023

See Map 5N 29 29DB

5N 29 29AC