

This map was prepared for assessment purposes

NW1/4 SE1/4 SEC 33 T5N R28E WM
UMATILLA COUNTY

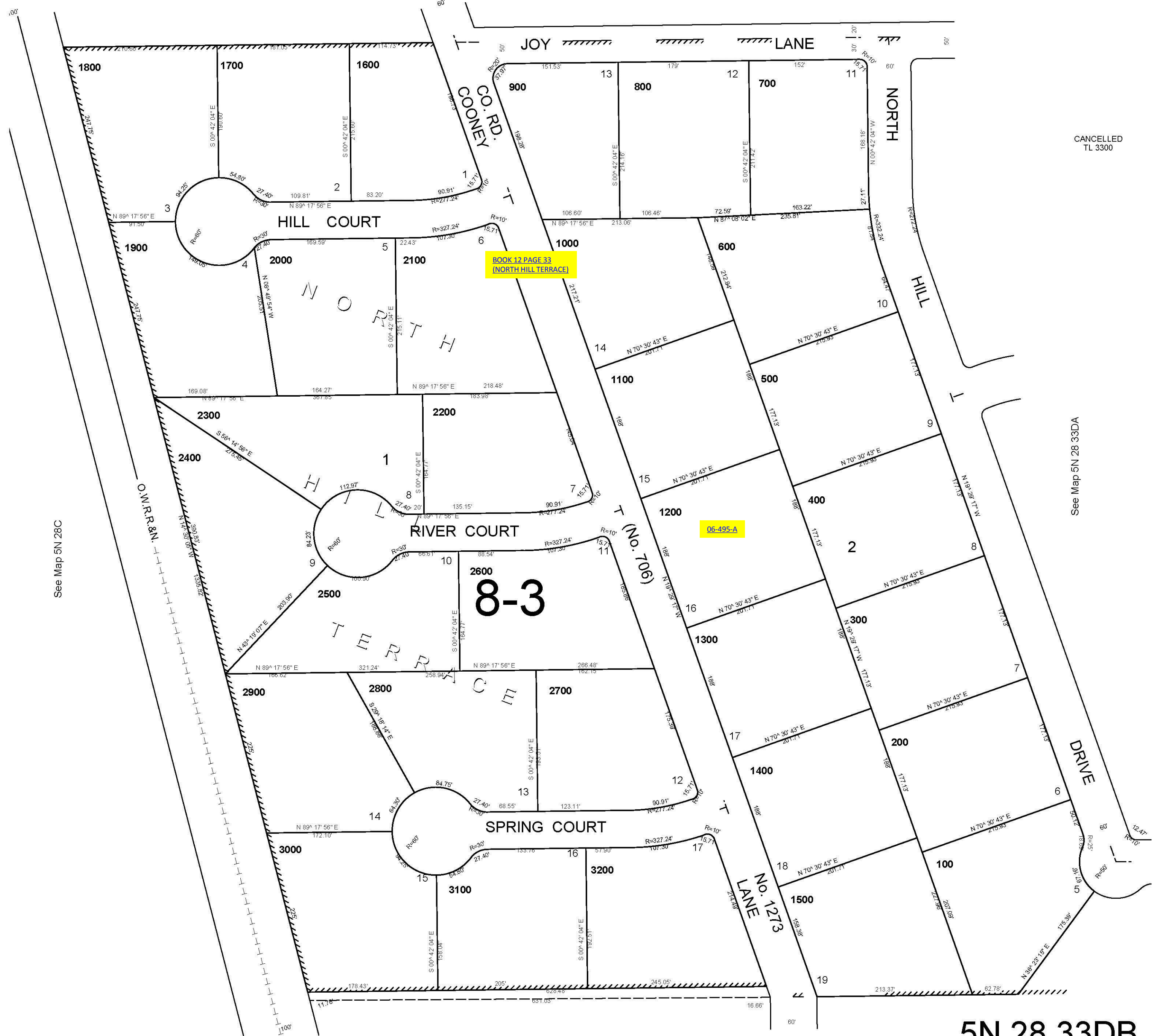
4/6/06

5N 28 33DB

AERIAL PHOTO NO. 1P-105

SCALE 1"=100'

See Map 5N 28 33A



See Map 5N 28C

See Map 5N 28 33DA

See Map 5N 28 33D

5N 28 33DB