

ALSO SEE SURVEYS Q-1568-A, S-156-C, 07-074-C, 09-040-A; CORNER RECORDS; G.L.O. SURVEYS

This map was prepared for Assessment & Taxation purposes only and was NOT prepared nor is it suitable for legal, engineering or surveying purposes.

Cancelled Tax Lots:
100
101
605

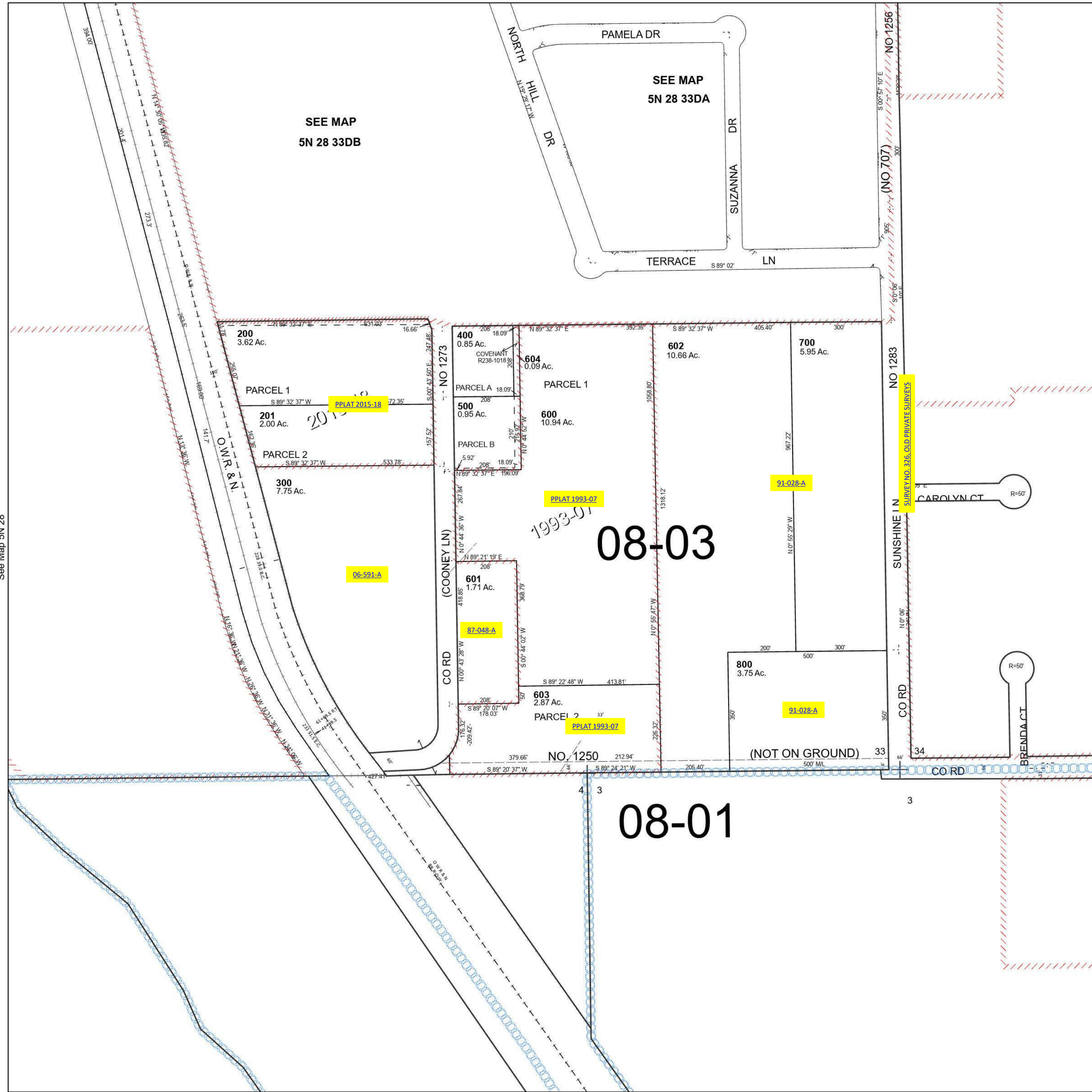
SE 1/4 SEC 33 T5N R28E WM UMATILLA COUNTY

5N 28 33D

Hermiston

SCALE 1" = 200'

See Map 5N 28 33DA



Revised 12/27/2023

See Map 4N 28 04A

5N 28 33D