

ALSO SEE SURVEY 04-155-B

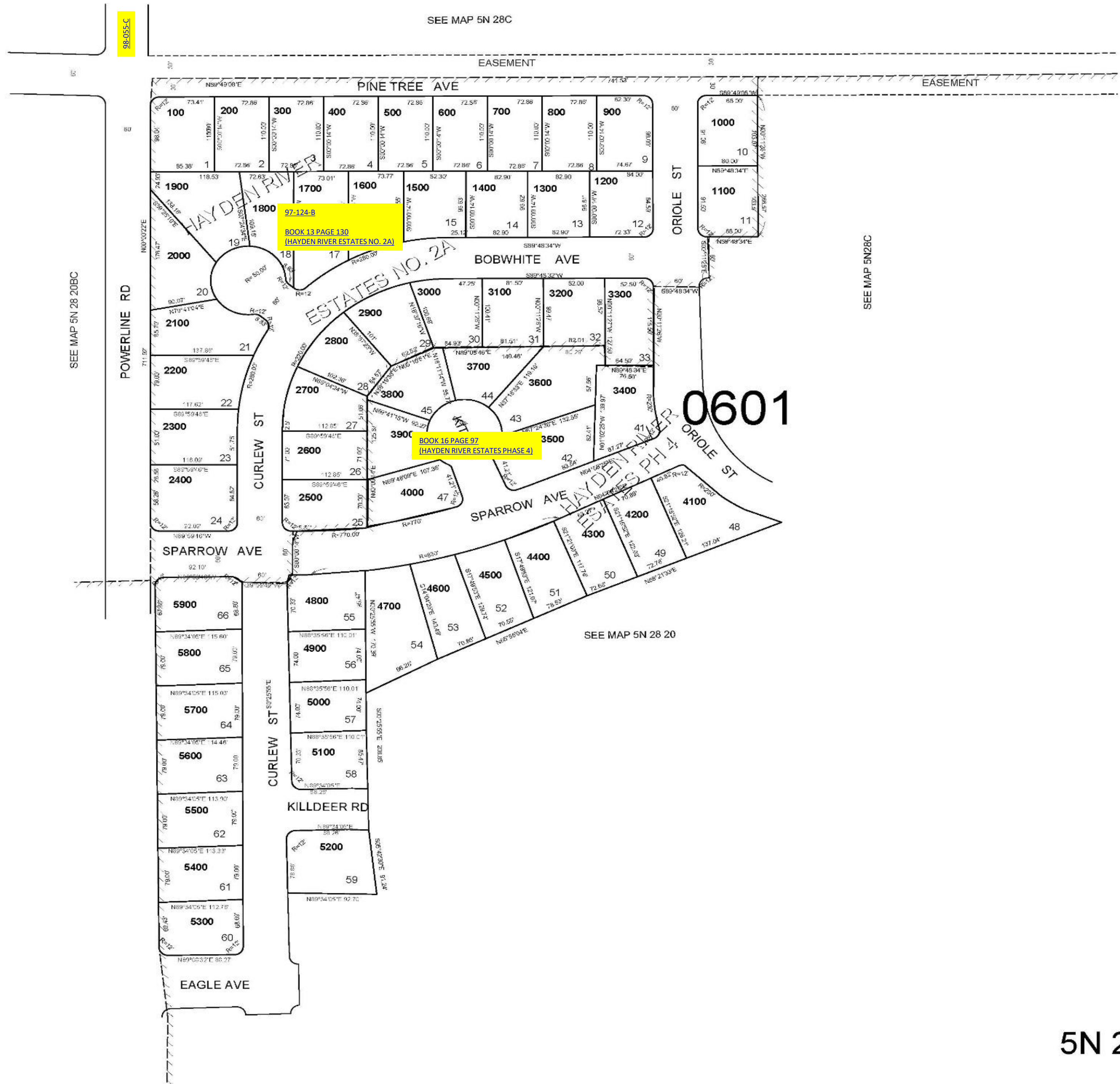
This map was prepared for Assessment & Taxation purposes only and was Not prepared, nor is it suitable for legal, engineering or surveying purposes.

# SE1/4 NW1/4 SEC 20 T5N R28E WM UMATILLA COUNTY

5N 28 20BD

SCALE 1"=100'

SEE MAP 5N 28C



REVISED: 12-24-19

5N 28 20BD