

This map was prepared for Assessment & Taxation purposes only and was NOT prepared nor is it suitable for legal, engineering or surveying purposes.

SEC 20 T5N R28E WM UMATILLA COUNTY

5N 28 20

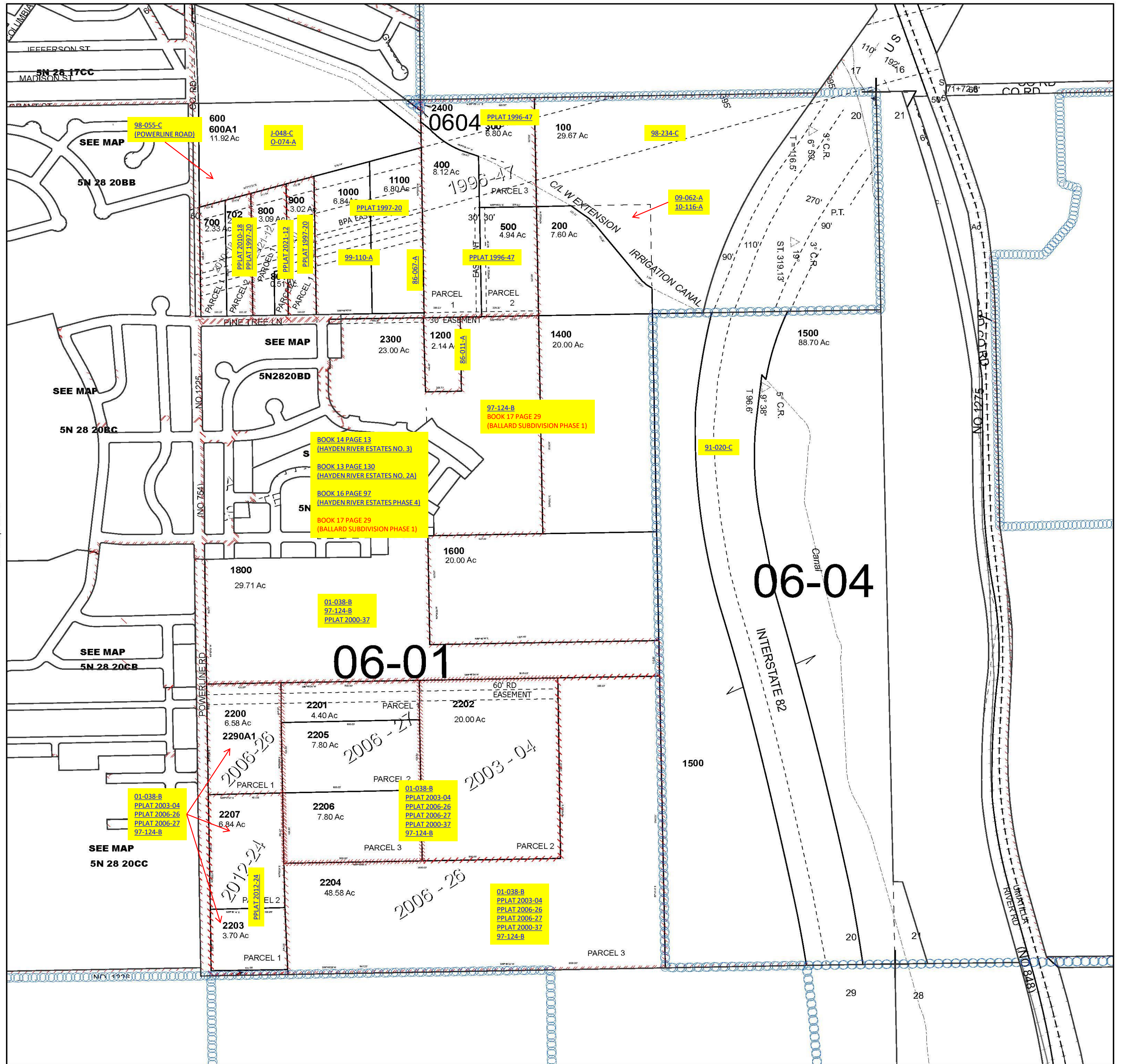
Umatilla

SCALE 1" = 400'

See Map 5N 28 17D

Cancelled Tax Lots

- 701
- 1300
- 1700
- 1801
- 1900
- 2000
- 2100
- 2290A1



Revised 3/13/2023

See Map 5N 28

5N 28 20