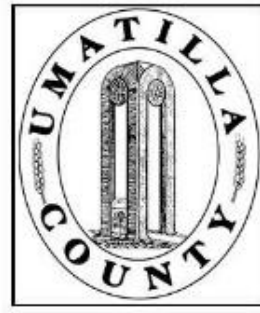


ALSO SEE SURVEYS 83-201-B, D-003-A, M-077-B, Q-0773-A, Q-1126-C, 04-155-B

This map was prepared for Assessment & Taxation purposes only and was NOT prepared nor is it suitable for legal, engineering or surveying purposes.

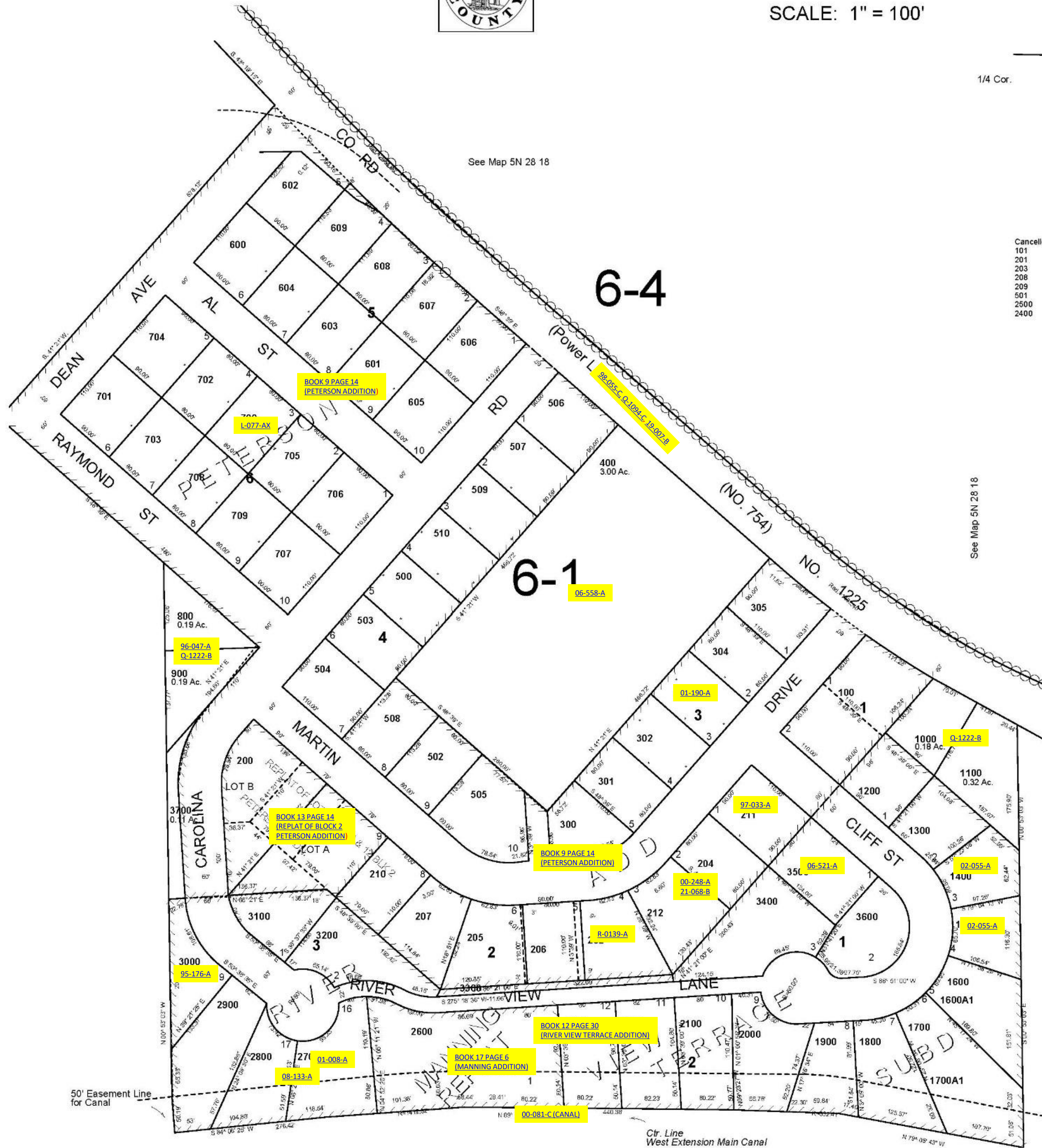
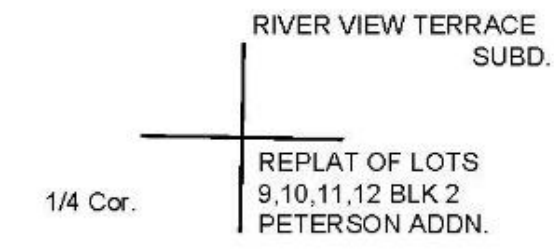


NE 1/4 SE 1/4 SEC 18 T5N R28E WM

5N2818DA

UMATILLA COUNTY

SCALE: 1" = 100'



- Cancelled No
- 101
  - 201
  - 203
  - 208
  - 209
  - 501
  - 2500
  - 2400

Revised: 06-17-14

5N2818DA