

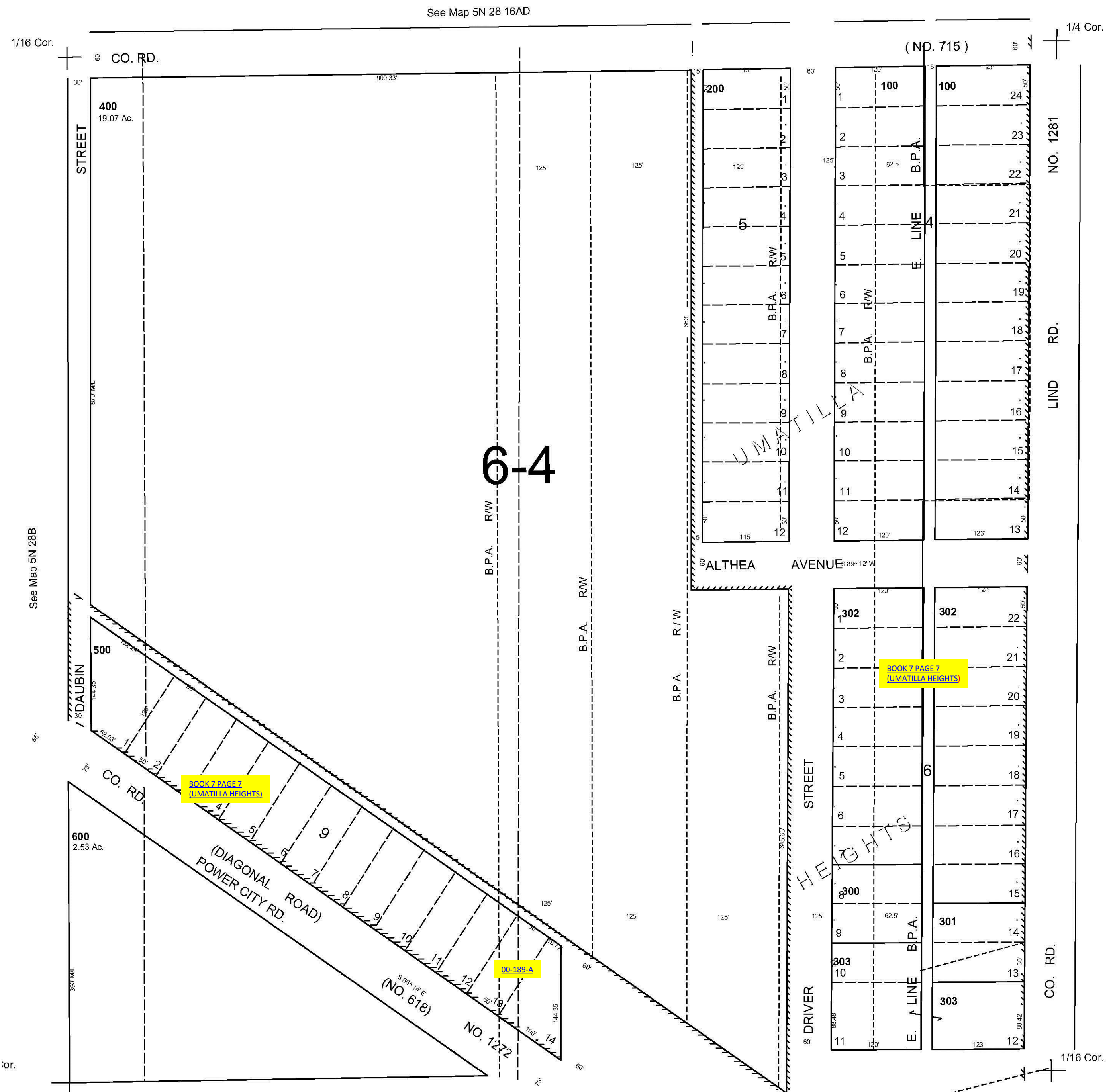
This map was prepared  
for assessment purposes

**NE1/4 SE1/4 SEC 16 T5N R28E WM**  
**UMATILLA COUNTY**  
SCALE 1"=100'

9/21/06

**5N 28 16DA**

AERIAL PHOTO NO. 1P-58



See Map 5N 28 16DD

**5N 28 16DA**