

This map was prepared for Assessment & Taxation purposes only and was NOT prepared nor is it suitable for legal, engineering or surveying purposes.

SW 1/4 NW 1/4 SEC 16 T5N R28E WM UMATILLA COUNTY

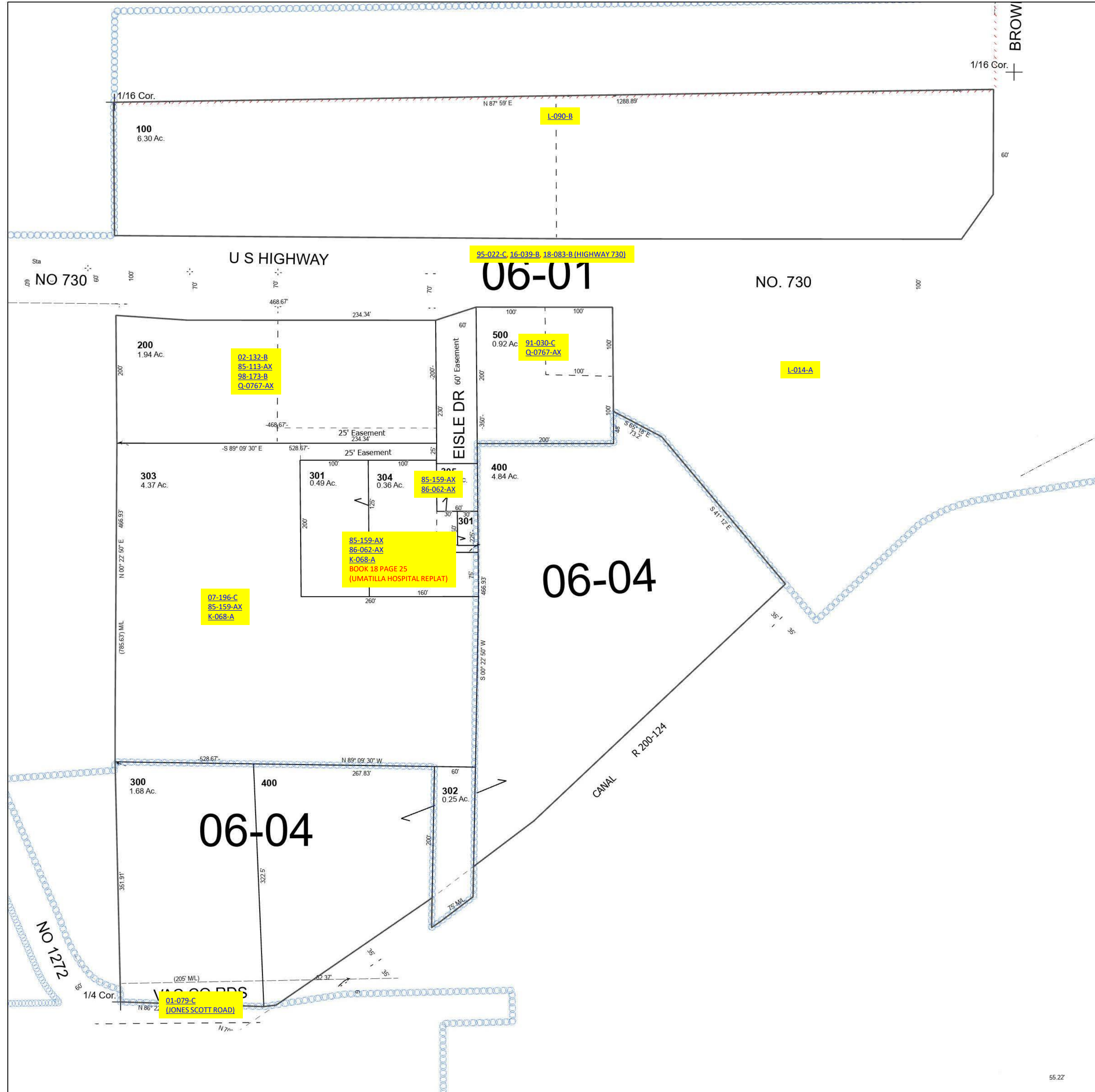
Umatilla

SCALE 1" =100'

5N 28 16BC

- Cancelled Tax Lots
- 101
 - 201
 - 202
 - 203
 - 306
 - 307
 - 401
 - 600

See Map 5N 28 16BB



See Map 5N 28 17AD

See Map 5N 28 16

Revised 8/25/2023

See Map 5N 28 16

5N 28 16BC