

ALSO SEE SURVEY 08-019-B

This map was prepared
for assessment purposes

NW1/4 SEC 29 T4N R37E WM UMATILLA COUNTY

3/18/05

4N 37 29B

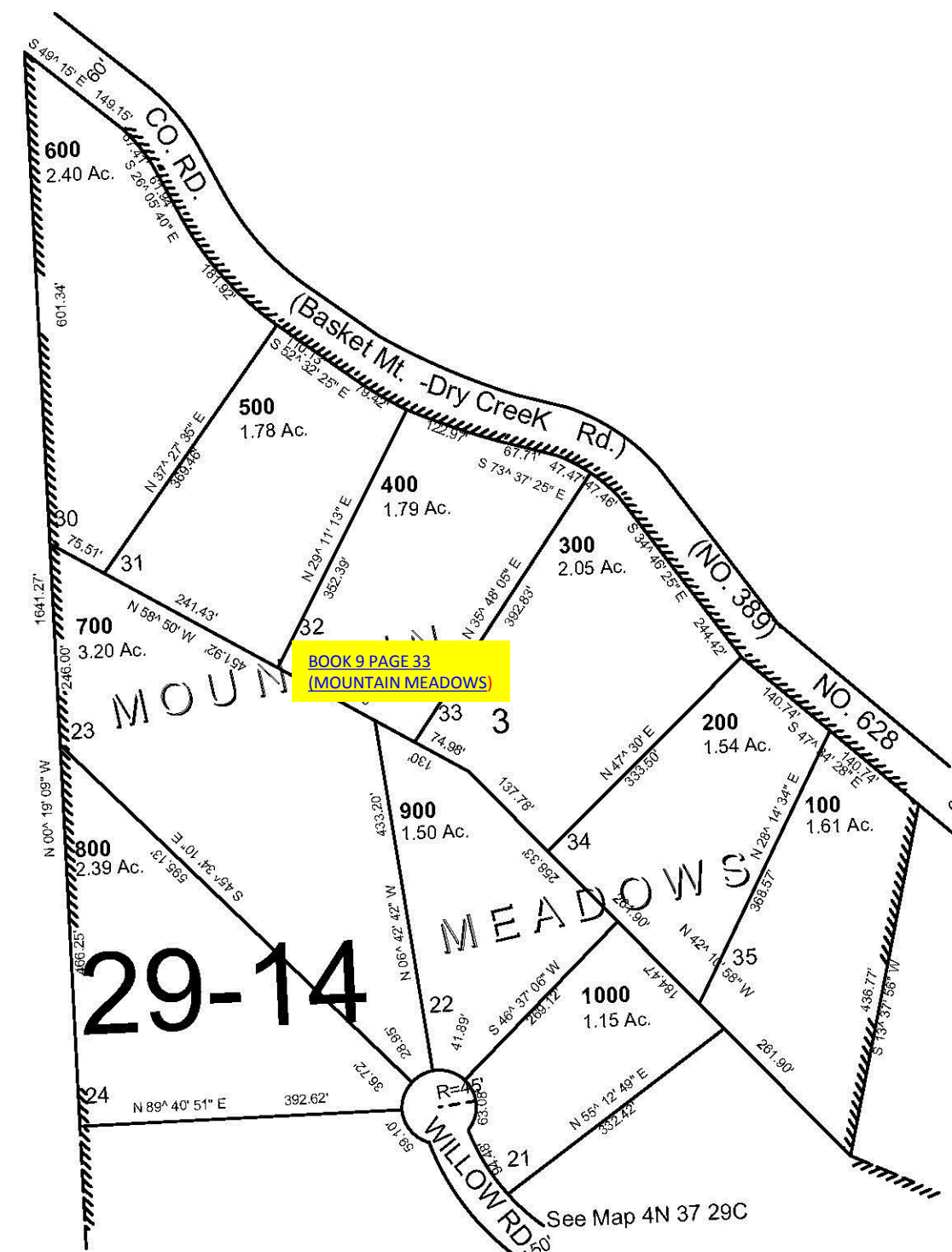
AERIAL PHOTO NO. 9P-39

1"=200'

See Map 4N 37 29

See Map 4N 37 29

See Map 4N 37 29



4N 37 29B