

This map was prepared for assessment purposes

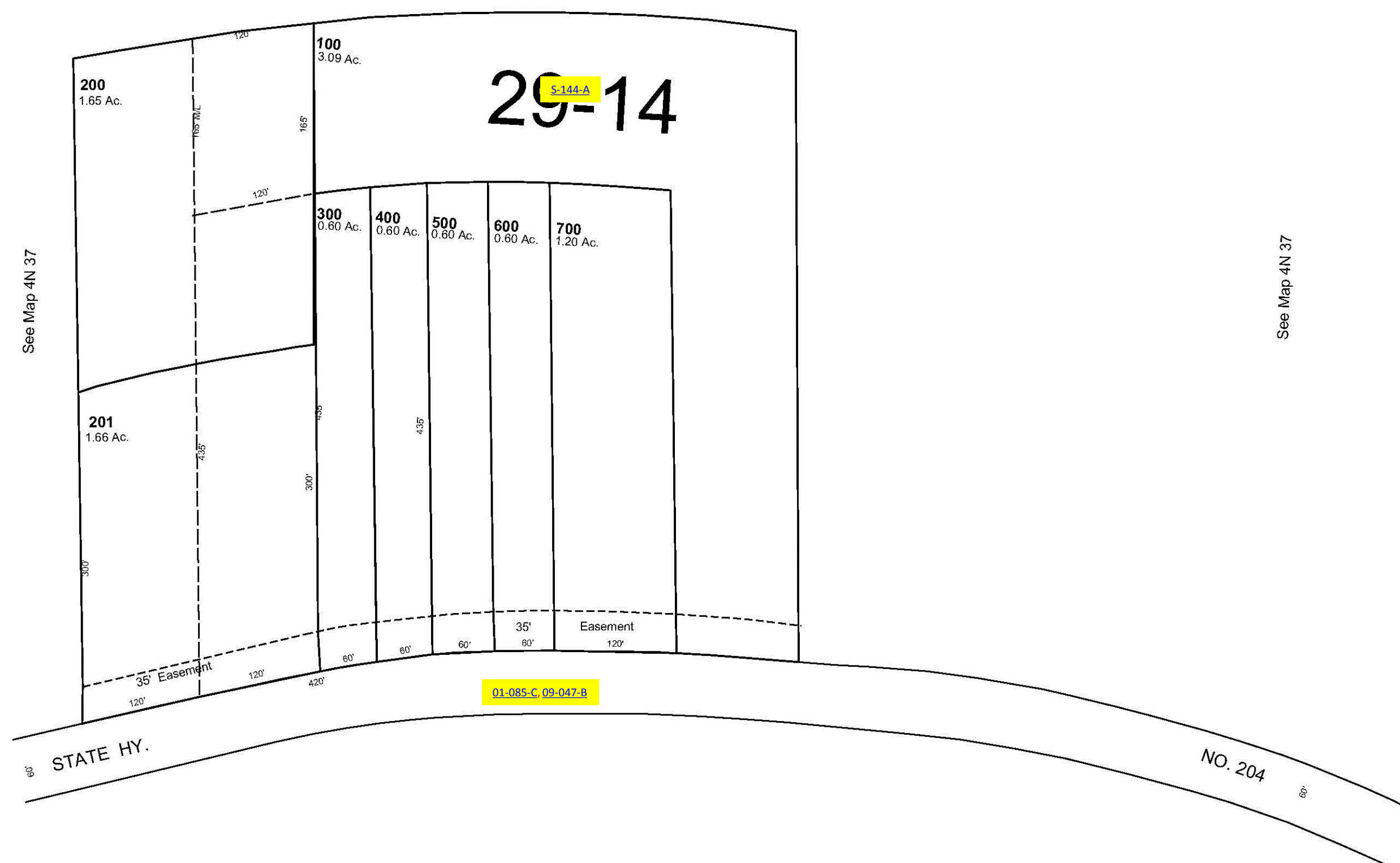
NW1/4 SW1/4 SEC 28 T4N R37E WM  
UMATILLA COUNTY  
SCALE 1"=100'

9/19/06

4N 37 28CB  
AERIAL PHOTO NO. 9P-37 & 38

See Map 4N 37

CANCELLED  
TL 101



1/16 Cor.

See Map 4N 37

4N 37 28CB