

This map was prepared for Assessment & Taxation purposes only and was NOT prepared nor is it suitable for legal, engineering or surveying purposes.

# SE1/4 SEC 26 T4N R37E WM UMATILLA COUNTY

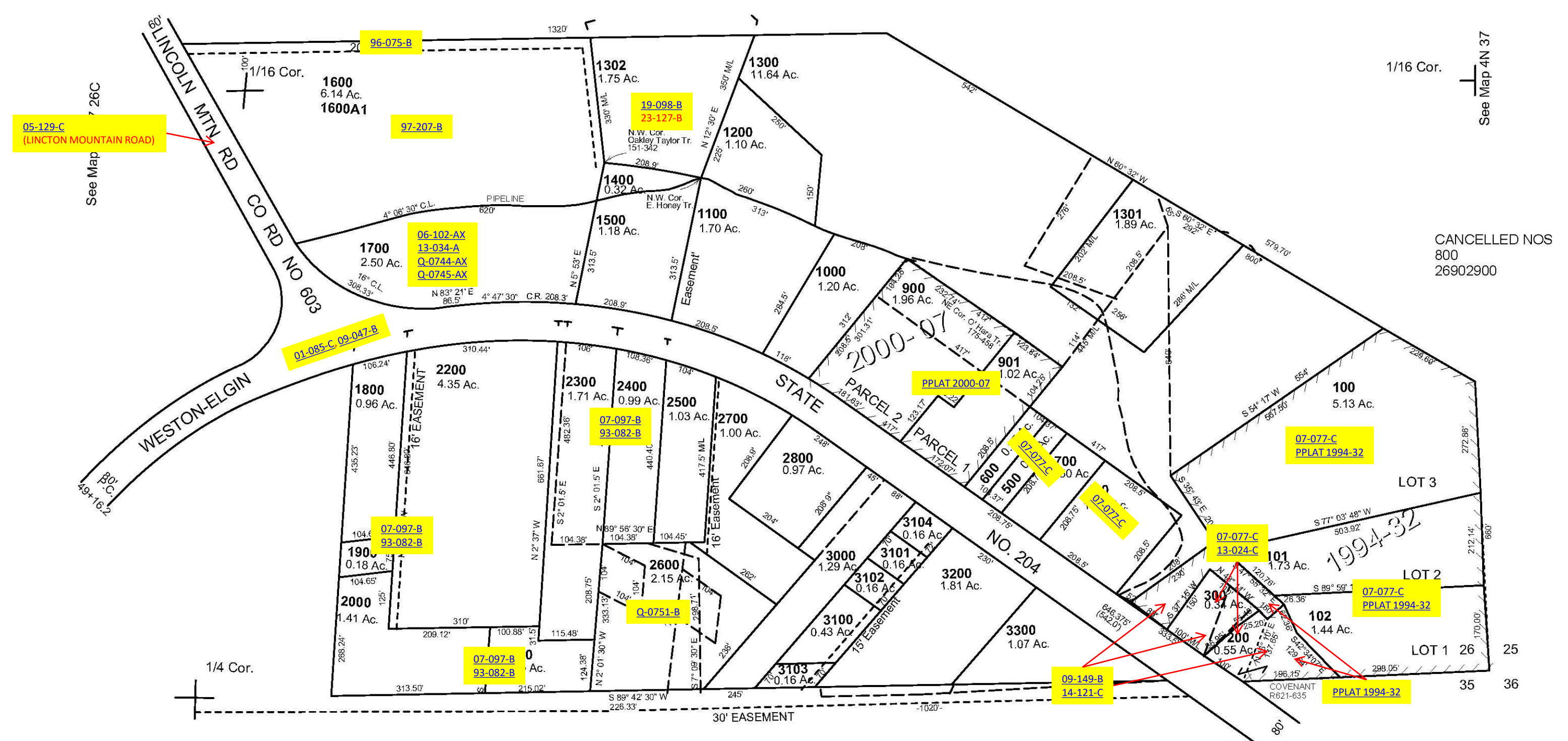
## 4N 37 26D

AERIAL PHOTO NO. 9P-35

1"=200'

See Map 4N 37

### 29-14



1/16 Cor.

See Map 4N 37

CANCELLED NOS  
800  
26902900

25

35

See Map 4N 37

REVISED: 12/12/14

## 4N 37 26D