

This map was prepared for Assessment and Taxation purposes only and has NOT been prepared for legal, engineering or surveying purposes.



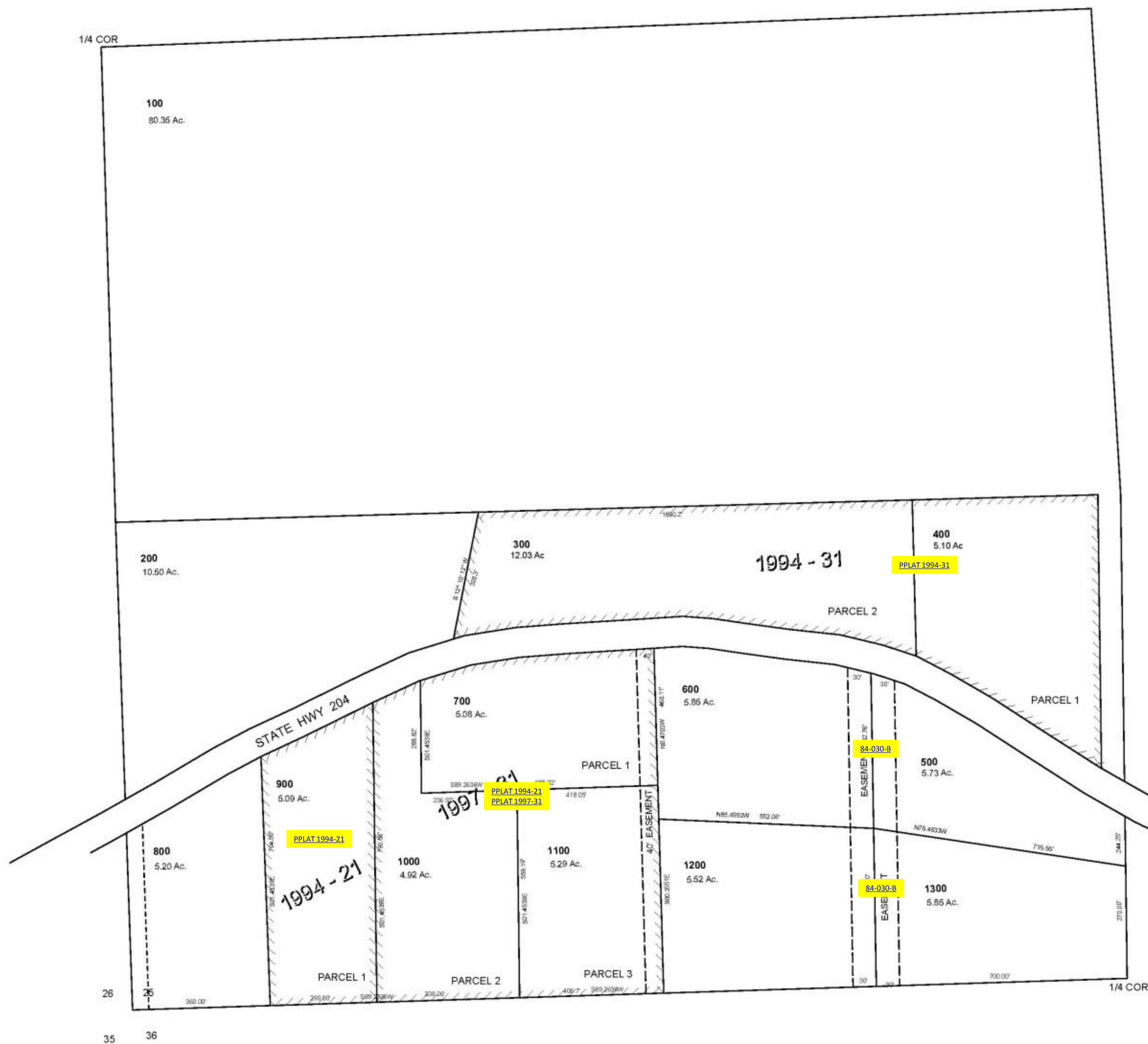
SW1/4 SEC 25 T 4N R 36 E WM UMATILLA COUNTY, OR

3/10/04

4N 36 25C

SCALE: 1" = 200'

AERIAL PHOTO NO. 5P 68-70 & 90-94



4N 36 25C