

ALSO SEE SURVEYS 03-023-C, 12-094-C; CORNER RECORDS; G.L.O. SURVEYS

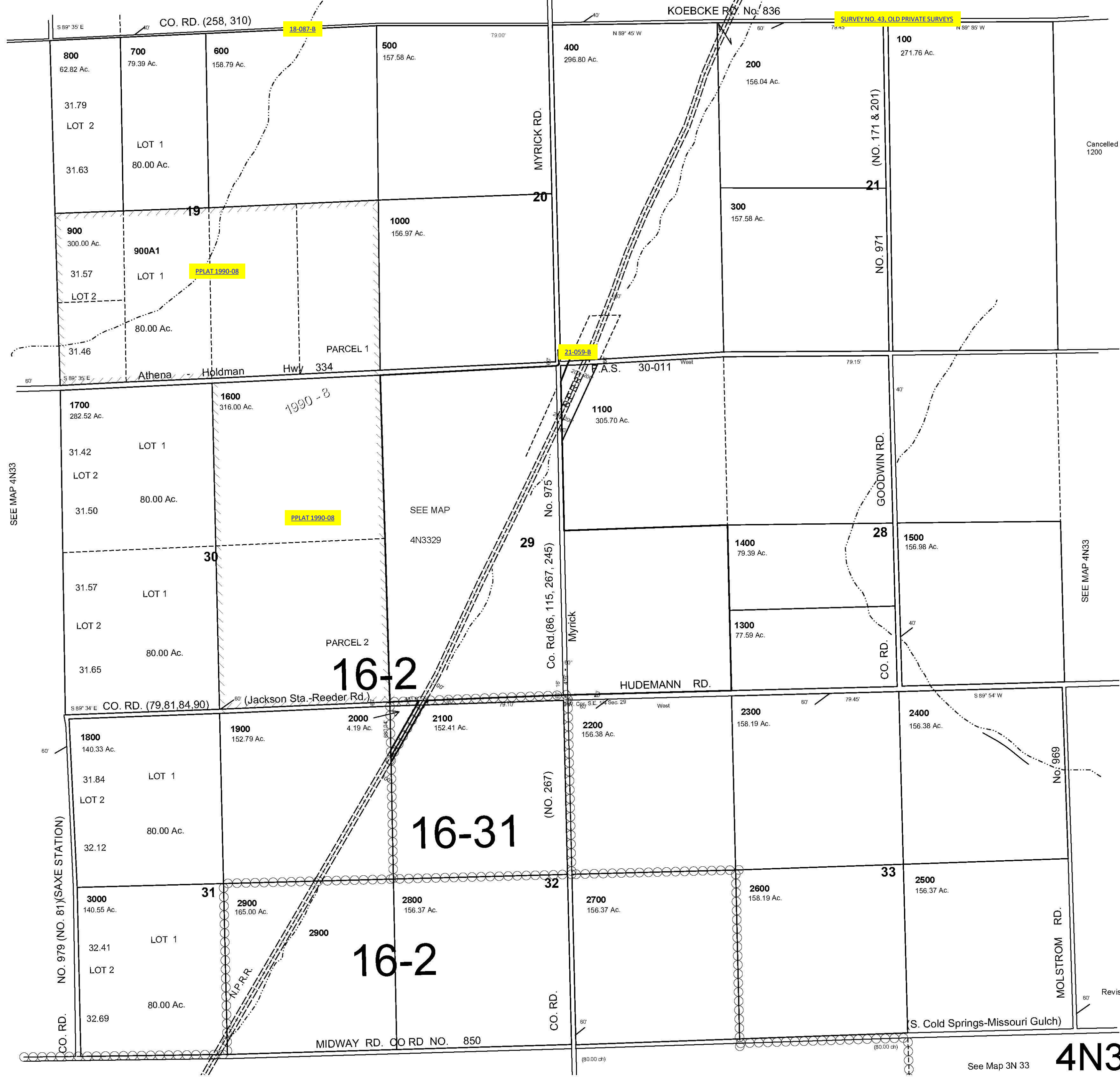
This map was prepared for Assessment and Taxation purposes only and has NOT been prepared for legal, engineering or surveying purposes.

# SW 1/4 T4N R33 E WM UMATILLA COUNTY

## 4N33C

SCALE 1"=1000'

AERIAL PHOTO NO NZ 6P 50-54, 106-111 & 127-131



SEE MAP 4N33

SEE MAP 4N33

CO. RD. NO. 81 (SAXE STATION)

Revised: 10-26-09

See Map 3N 33

## 4N33C