

ALSO SEE SURVEYS 06-084-AX, 03-023-C, 97-141-C, Q-0721-AX; CORNER RECORDS; G.L.O. SURVEYS; REDFIELD SURVEYS

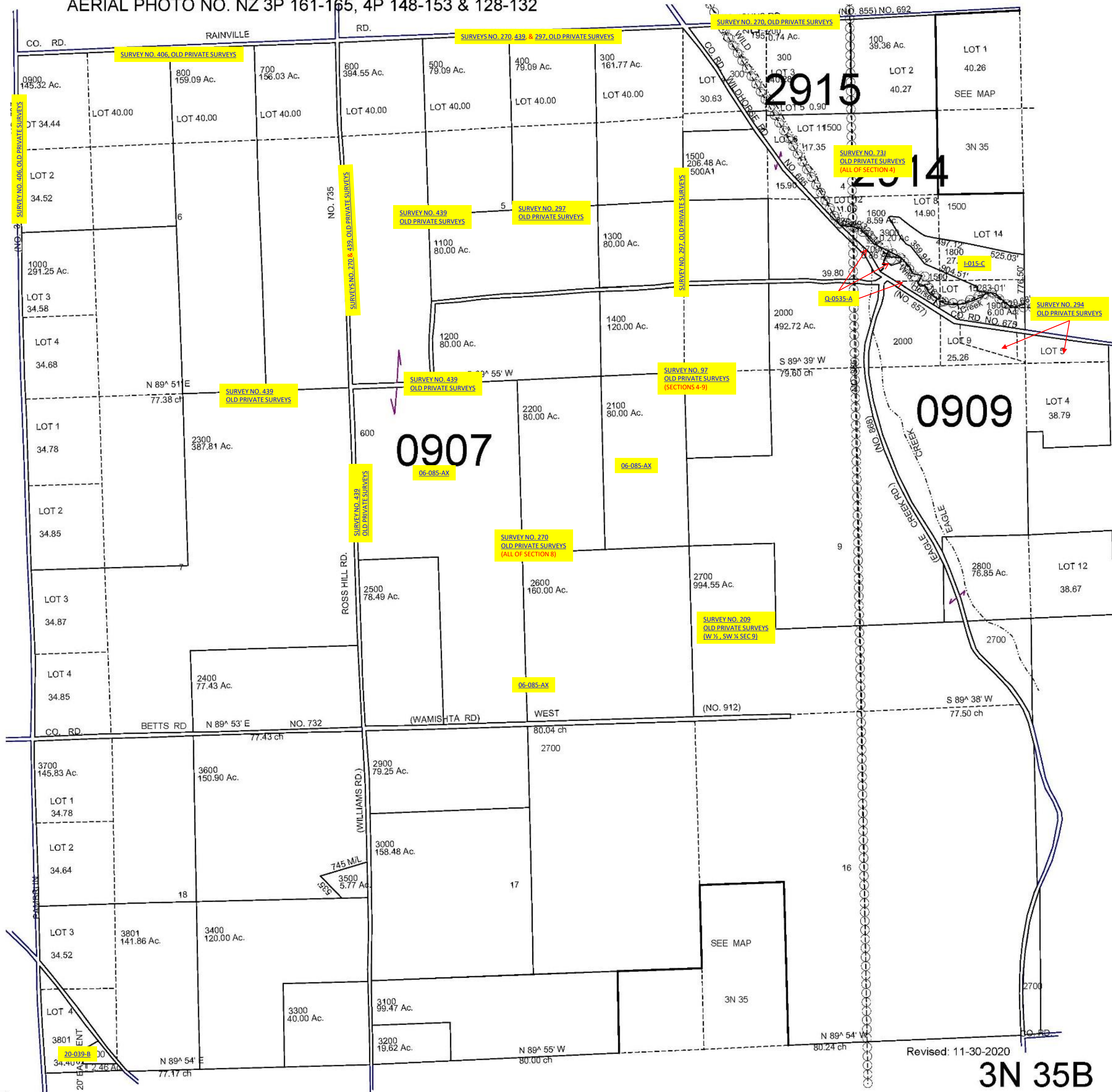
This map was prepared for Assessment & Taxation purposes only and was NOT prepared nor is it suitable for legal, engineering or surveying purposes.

# NW1/4 T3N R35E WM UMATILLA COUNTY

## 3N 35B

AERIAL PHOTO NO. NZ 3P 161-165, 4P 148-153 & 128-132

SCALE  
1" = 1000'



Revised: 11-30-2020

## 3N 35B