

This map was prepared for Assessment & Taxation **ALSO SEE SURVEY 05-070-C**  
NOT prepared nor is it suitable for legal, engineering or surveying purposes.

# NE 1/4 SE 1/4 SEC 04 T3N R34E WM UMATILLA COUNTY

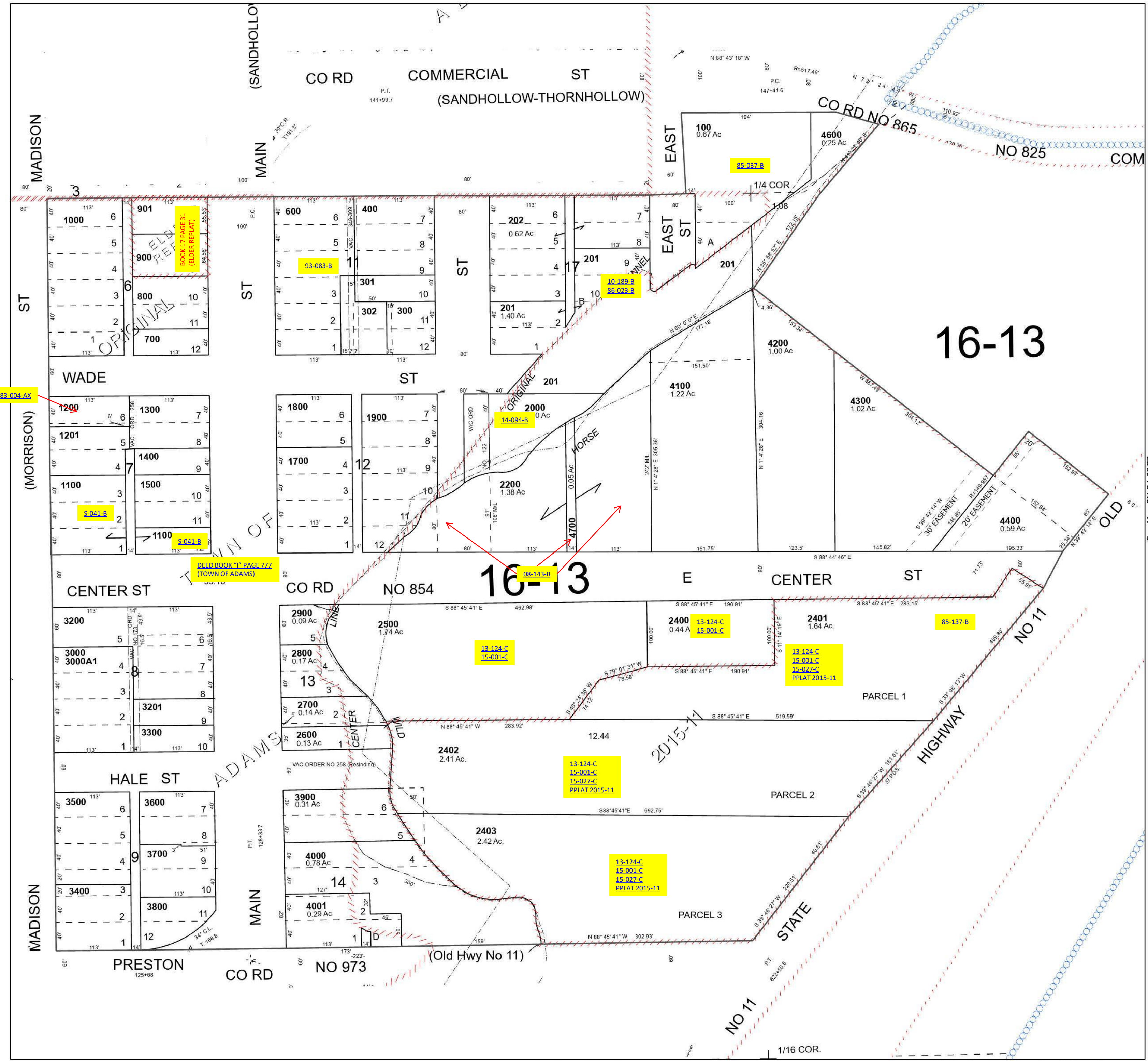
Adams

SCALE 1" = 100'

## 3N 34 04DA

- Cancelled Tax Lots
- 200
  - 203
  - 303
  - 1202
  - 2100
  - 2300
  - 3001
  - 3100
  - 4500
  - 500

See Map 3N 34 04AD



See Map 3N 34 04DB

See Map 3N 34 03CB

Revised 9/20/2023

See Map 3N 34 04DD

## 3N 34 04DA