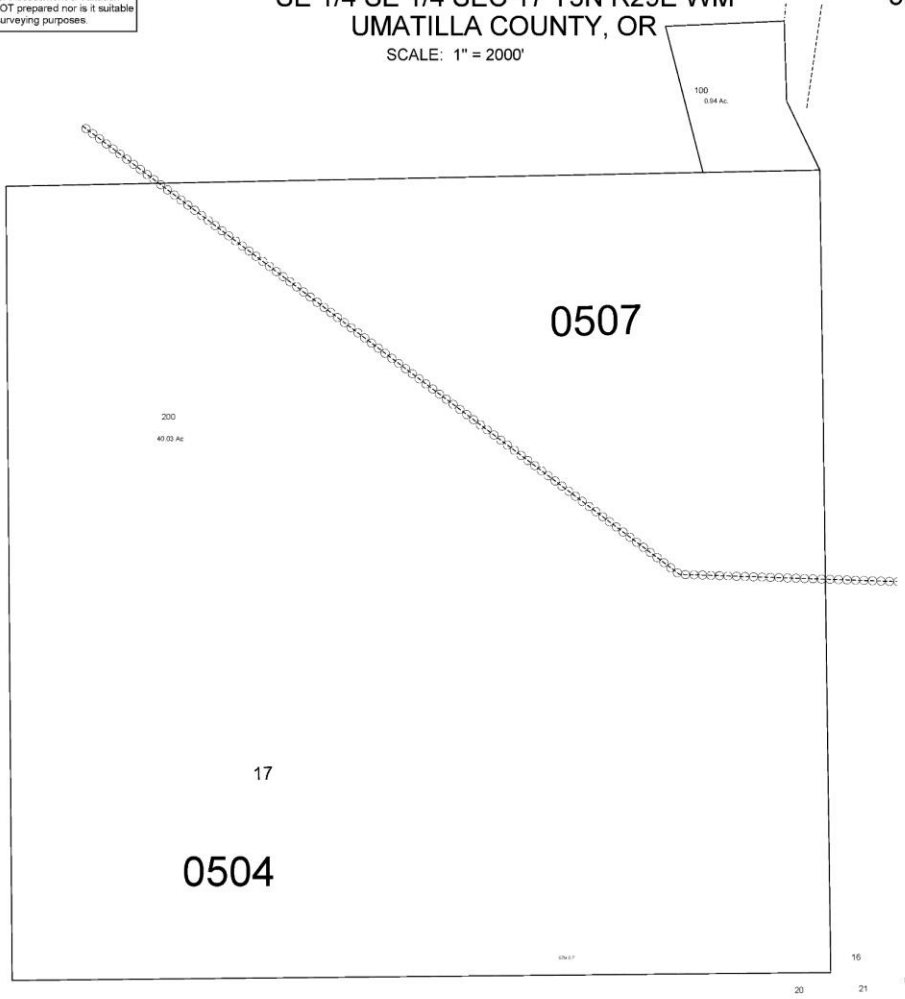


This map was prepared for Assessment & Taxation purposes only and was NOT prepared nor is it suitable for legal, engineering or surveying purposes.

SE 1/4 SE 1/4 SEC 17 T3N R29E WM  
UMATILLA COUNTY, OR  
SCALE: 1" = 2000'

3N2917DD



REVISED: 03-05-2021

3N2917DD