

ALSO SEE SURVEYS 05-086-B, 05-087-B, 07-053-B, Q-0033-C, Q-0034-C, 13-193-A, Q-0032-B

This map was prepared for Assessment & Taxation purposes only and was NOT prepared nor is it suitable for legal, engineering or surveying purposes.

# NE 1/4 SE 1/4 SEC 16 T3N R29E WM UMATILLA COUNTY

SCALE 1" = 100'

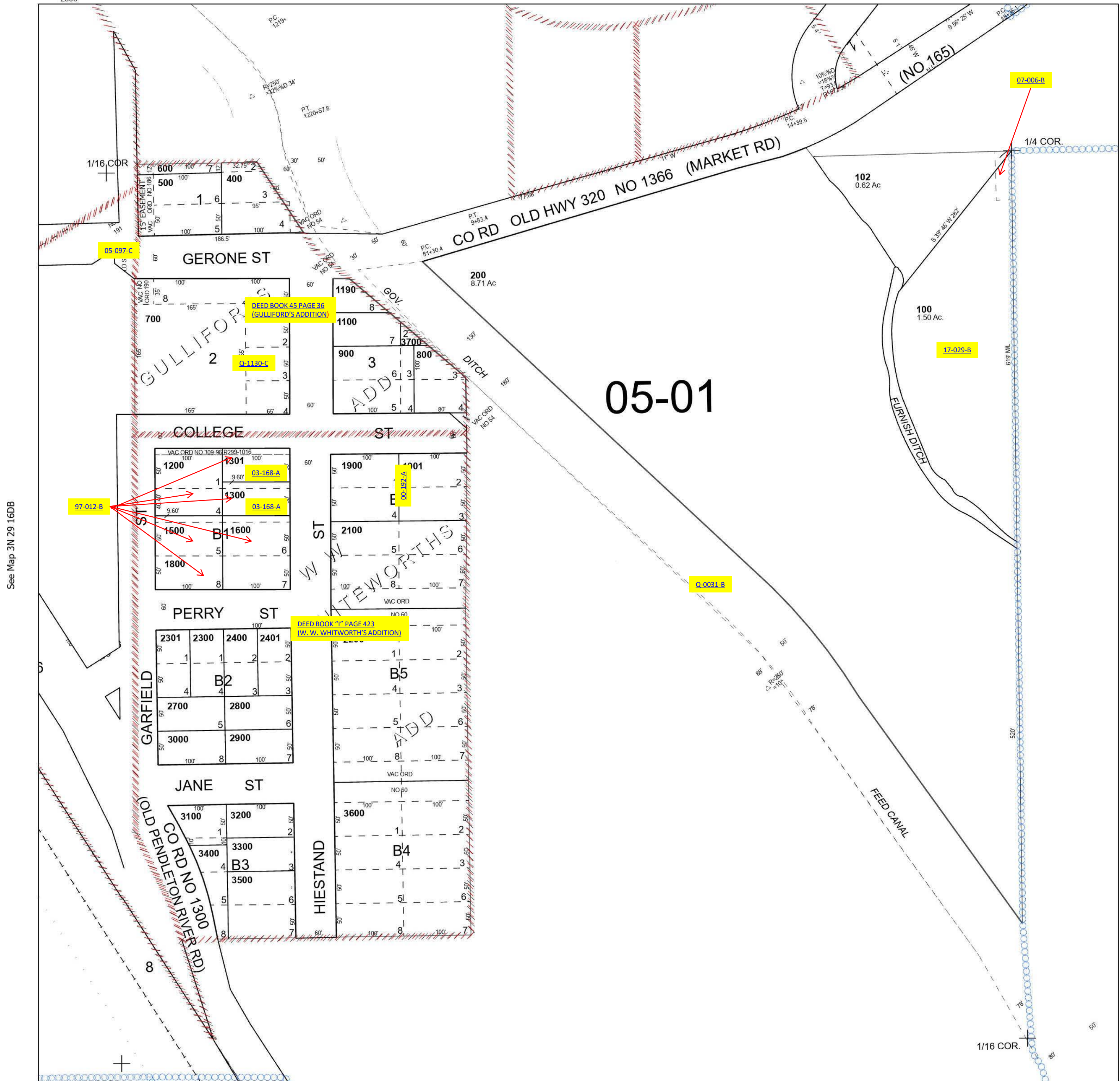
Echo

Cancelled Tax Lots

- 101
- 300
- 801
- 1000
- 1090
- 1400
- 1700
- 2000
- 2500
- 2600

See Map 3N 29 16AD

## 3N 29 16DA



See Map 3N 29 16DB

See Map 3N 29 15C

Revised 11/9/2023

See Map 3N 29 16

## 3N 29 16DA