

This map was prepared for Assessment & Taxation purposes only and was NOT prepared nor is it suitable for legal, engineering or surveying purposes.

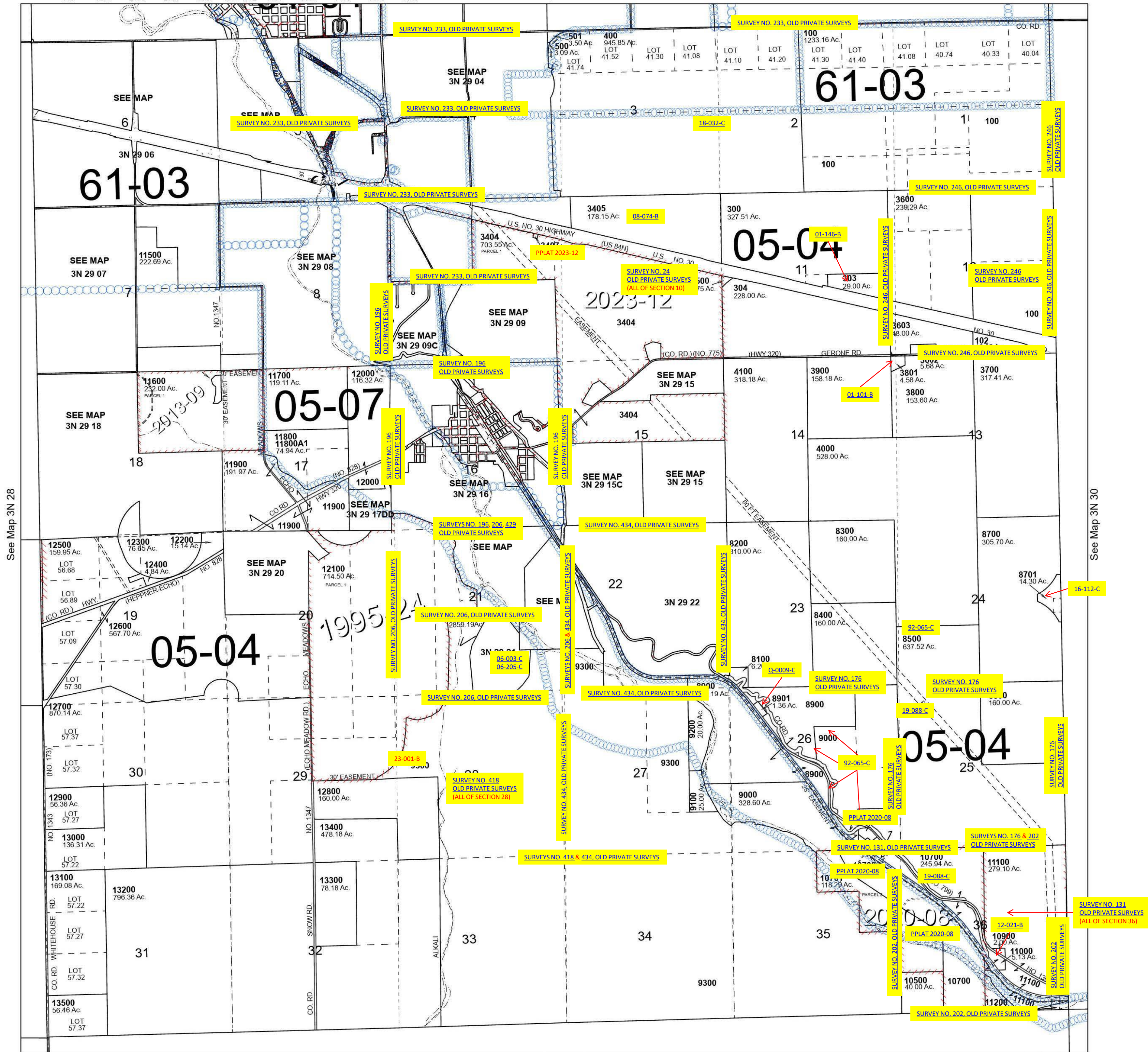
T3N R29E WM UMATILLA COUNTY

SCALE 1" = 2,000'

3N 29

| Cancelled Tax Lots | | | | | | | | | | | |
|--------------------|------|------|-----------|-----------|-----------|------|-----------|-----------|-----------|------|-------|
| 101 | 800 | 1700 | 2400 | 3001 | 4101 | 5000 | 5700 | 6400 | 7101 | 7801 | 9800 |
| 103 | 900 | 1702 | 2500 | 3100 | 4200 | 5100 | 5800 | 6500 | 7200-7202 | 7900 | 9801 |
| 105 | 901 | 1800 | 2590 | 3200-3202 | 4300 | 5200 | 5801 | 6600 | 7300 | 8000 | 9900 |
| 200 | 1000 | 1804 | 2600-2603 | 3300-3302 | 4400 | 5300 | 5900-5904 | 6601 | 7400 | 8600 | 10000 |
| 202 | 1100 | 1900 | 2700 | 3400 | 4500 | 5301 | 6000-6002 | 6700 | 7500 | 9001 | 10100 |
| 301 | 1200 | 2000 | 2800 | 3402 | 4600 | 5400 | 6100-6106 | 6701 | 7600 | 9400 | 10200 |
| 302 | 1300 | 2001 | 2801 | 3403 | 4601 | 5500 | 6200-6204 | 6800-6803 | 7601 | 9401 | 10300 |
| 305 | 1400 | 2100 | 2900 | 3406 | 4700 | 5501 | 6300 | 6900 | 7700 | 9500 | 10400 |
| 600 | 1500 | 2200 | 2901 | 3601 | 4800 | 5600 | 6302 | 7000 | 7701 | 9600 | 11400 |
| 700 | 1600 | 2300 | 2990 | 3701 | 4900-4902 | 5601 | 6303 | 7100 | 7800 | 9700 | 11400 |

See Map 4N 29 34



See Map 3N 28

See Map 3N 30

Revised 3/7/2024

See Map 2N 29

3N 29