

ALSO SEE CORNER RECORDS; G.L.O. SURVEYS

This map was prepared for Assessment & Taxation purposes only and was NOT prepared nor is it suitable for legal, engineering or surveying purposes.

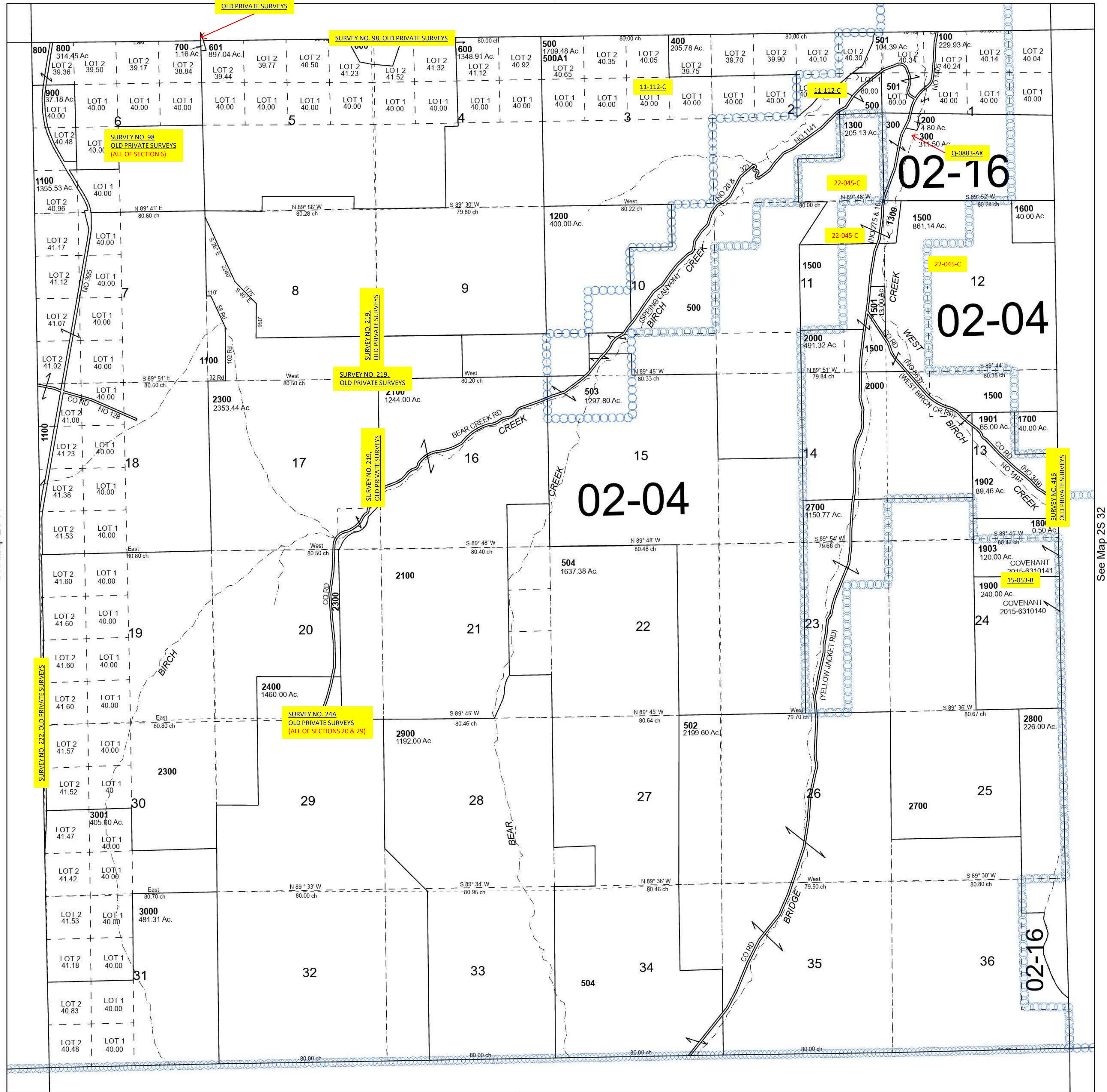
T2S R31E WM UMATILLA COUNTY

2S 31

SCALE 1" = 2,000'

- Cancelled Tax Lots
- 1101
 - 1400
 - 2200
 - 2500
 - 2600
 - 602

See Map 1S 31



See Map 2S 30

See Map 2S 32

Revised 3/6/2024

See Map 3S 31

2S 31