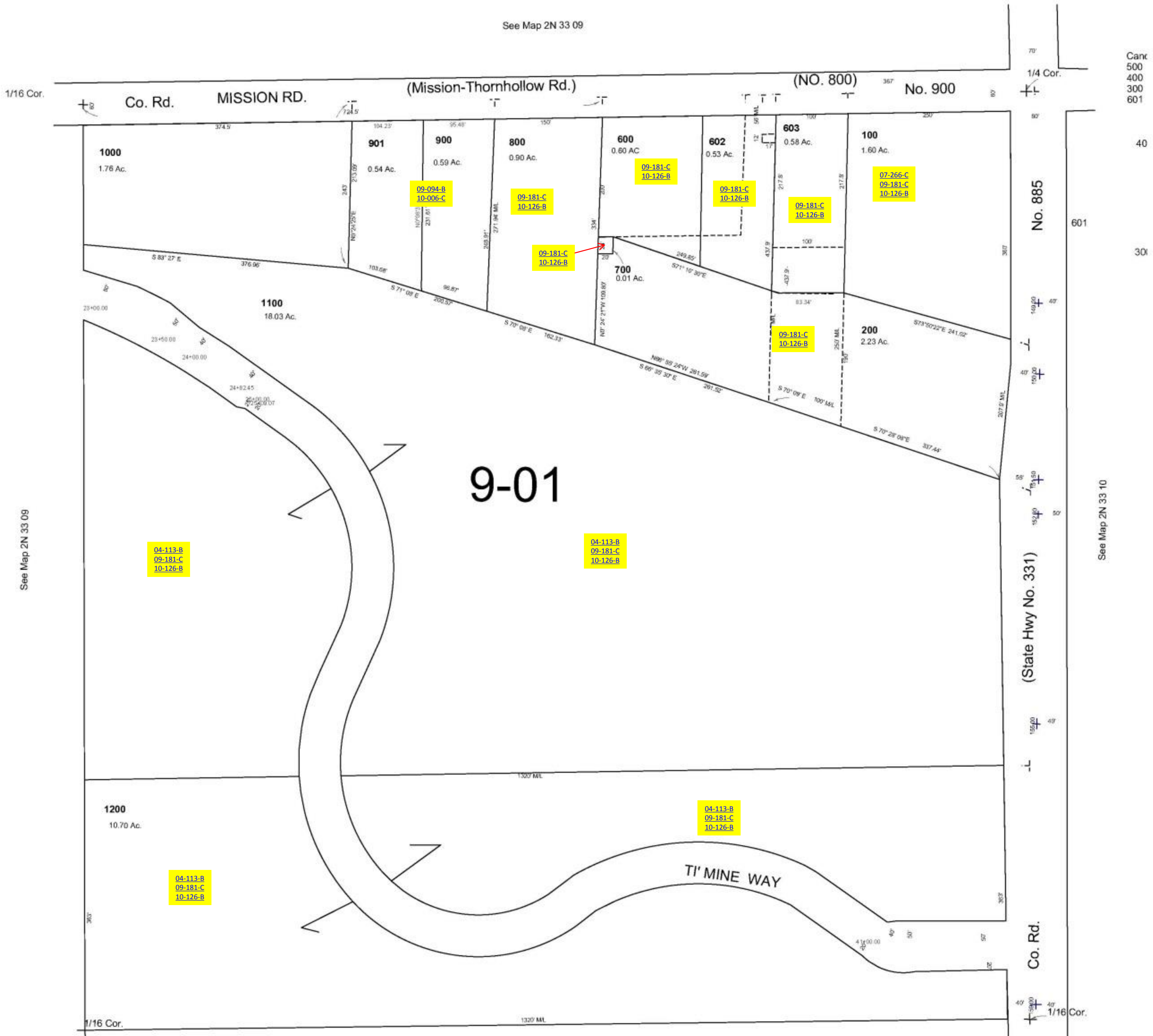


This map was prepared for Assessment & Taxation purposes only and was NOT prepared nor is it suitable for legal, engineering or surveying purposes.

NE1/4 SE1/4 SEC 9 T2NR33E WM
UMATILLA COUNTY
SCALE 1"=100'

2N 33 09DA

See Map 2N 33 09



Canc
500
400
300
601

40

No. 885

601

30

9-01

See Map 2N 33 10

(State Hwy No. 331)

Co. Rd.

Revised: 11-07-12

2N 33 09DA

See Map 2N 33 09

See Map 2N 33 09