

ALSO SEE SURVEYS 05-154-C, 06-145-AX, 07-285-C, Q-0466-AX, S-138-AX, 12-027-B, 90-050-C, 96-055-G, H-144-C; CORNER RECORDS; G.L.O. SURVEYS; REDFIELD SURVEYS

This map was prepared for Assessment & Taxation purposes only and was NOT prepared nor is it suitable for legal, engineering or surveying purposes.

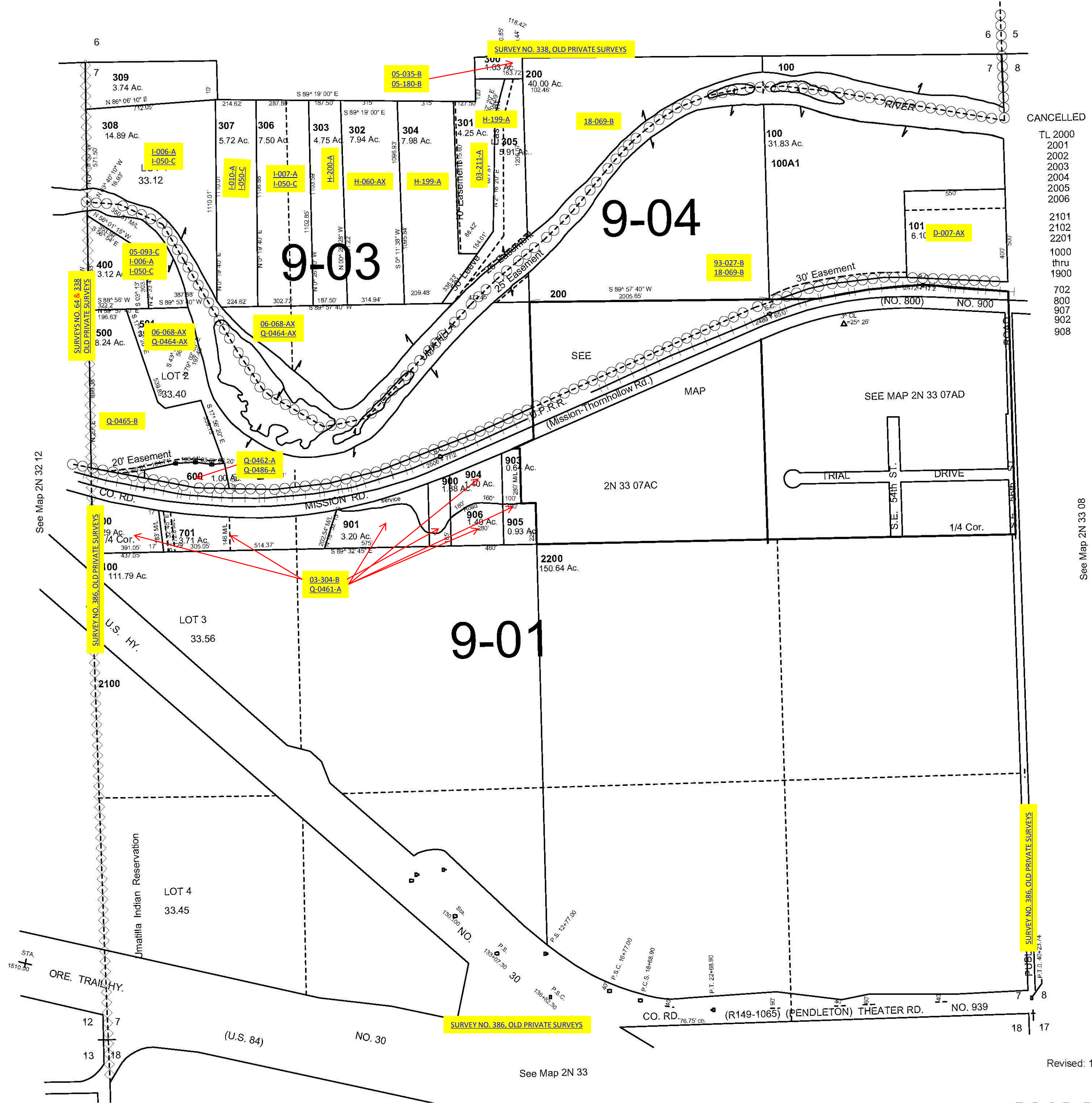
SEC 7 T2NR33E WM UMATILLA COUNTY

SCALE 1"=400'

2N3307

AERIAL PHOTO NO 4P-101

See Map 2N 33 06



CANCELLED

TL 2000
2001
2002
2003
2004
2005
2006

2101
2102
2201

1000
thru
1900

702
800
907
902
908

See Map 2N 33 08

See Map 2N 33

Revised: 10-21-09

2N3307