

This map was prepared for Assessment & Taxation purposes only and was NOT prepared nor is it suitable for legal, engineering or surveying purposes.

SE 1/4 SW 1/4 SEC 06 T2N R33E WM UMATILLA COUNTY

SCALE 1" = 100'

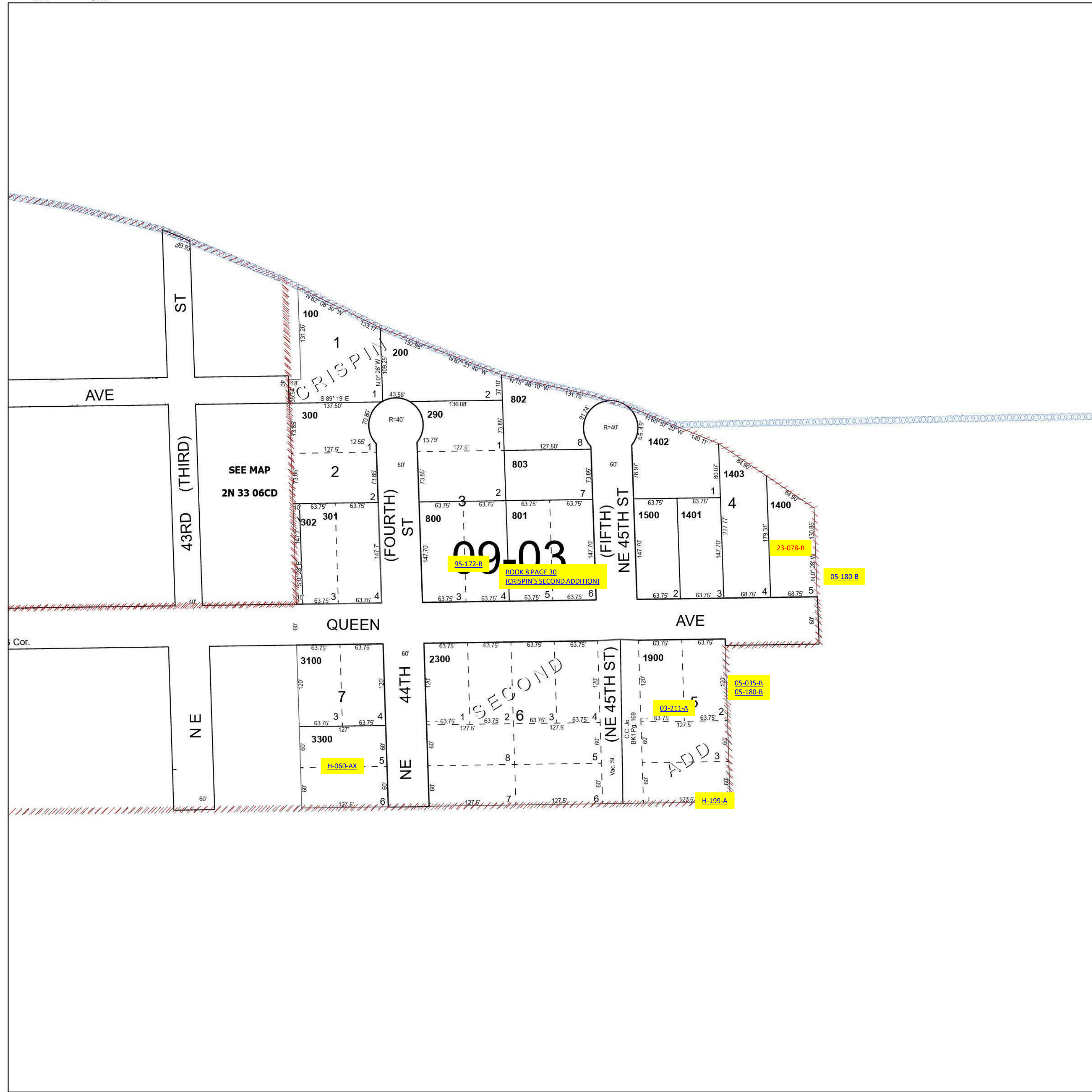
Cancelled Tax Lots

3400	1600	2900
3200	1700	3000
400	1800	700
500	2000	
600	2100	
900	2400	
1000	2500	
1100	2600	
1200	2700	
1300	2800	

See Map 2N 33 06

2N 33 06CD

See Map 2N 33 06CC



See Map 2N 33 07

Revised 11/9/2023

See Map 2N 33 07

2N 33 06CD