

ALSO SEE SURVEYS 06-384-A, 13-050-B, 12-027-B; CORNER RECORDS; G.L.O. SURVEYS; REDFIELD SURVEYS

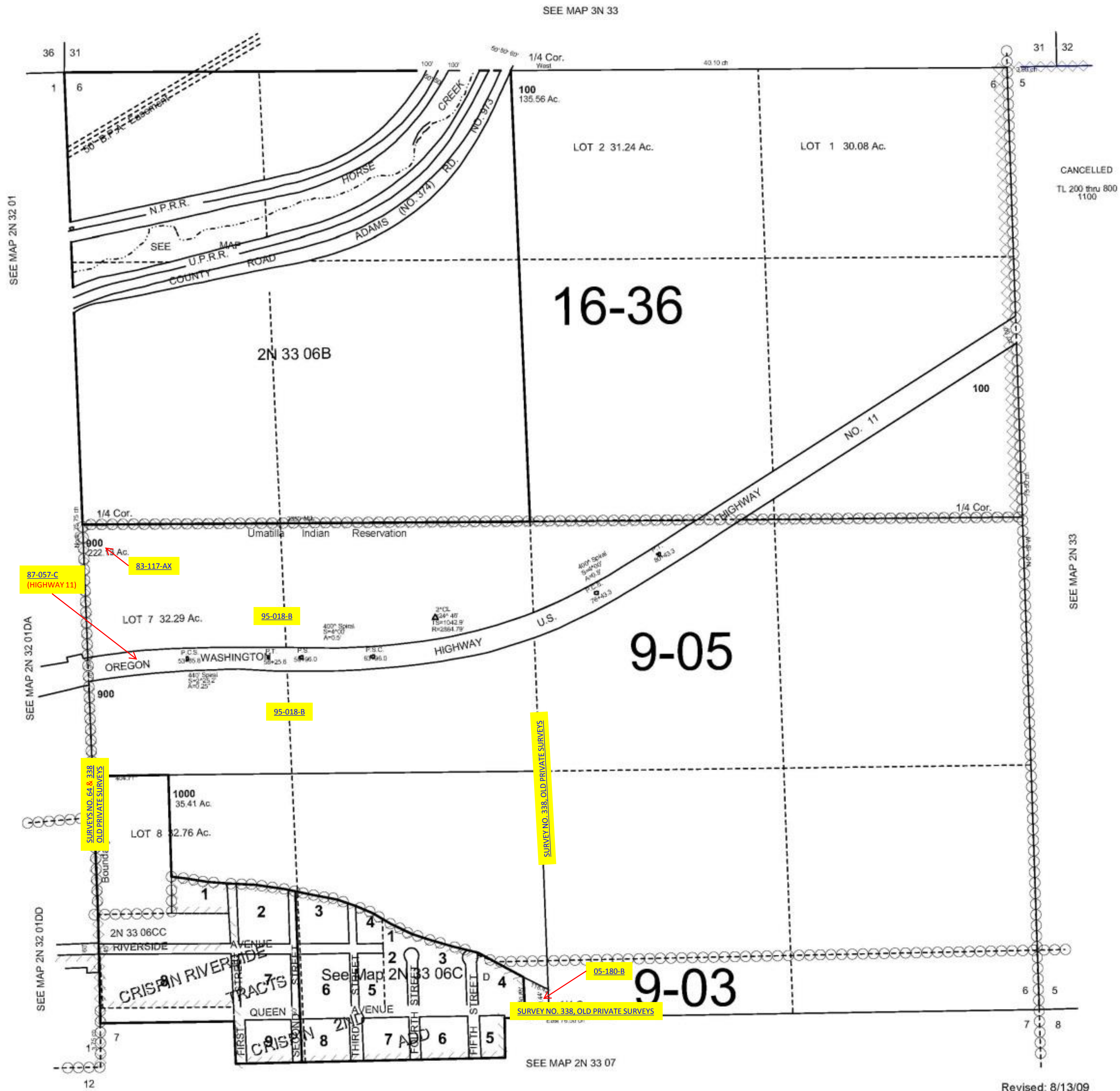
This map was prepared for Assessment & Taxation purposes only and was NOT prepared nor is it suitable for legal, engineering or surveying purposes.

# SEC 6 T2N R33E WM UMATILLA COUNTY

## 2N3306

SCALE 1"=400'

AERIAL PHOTO 4P-101



Revised: 8/13/09

## 2N3306