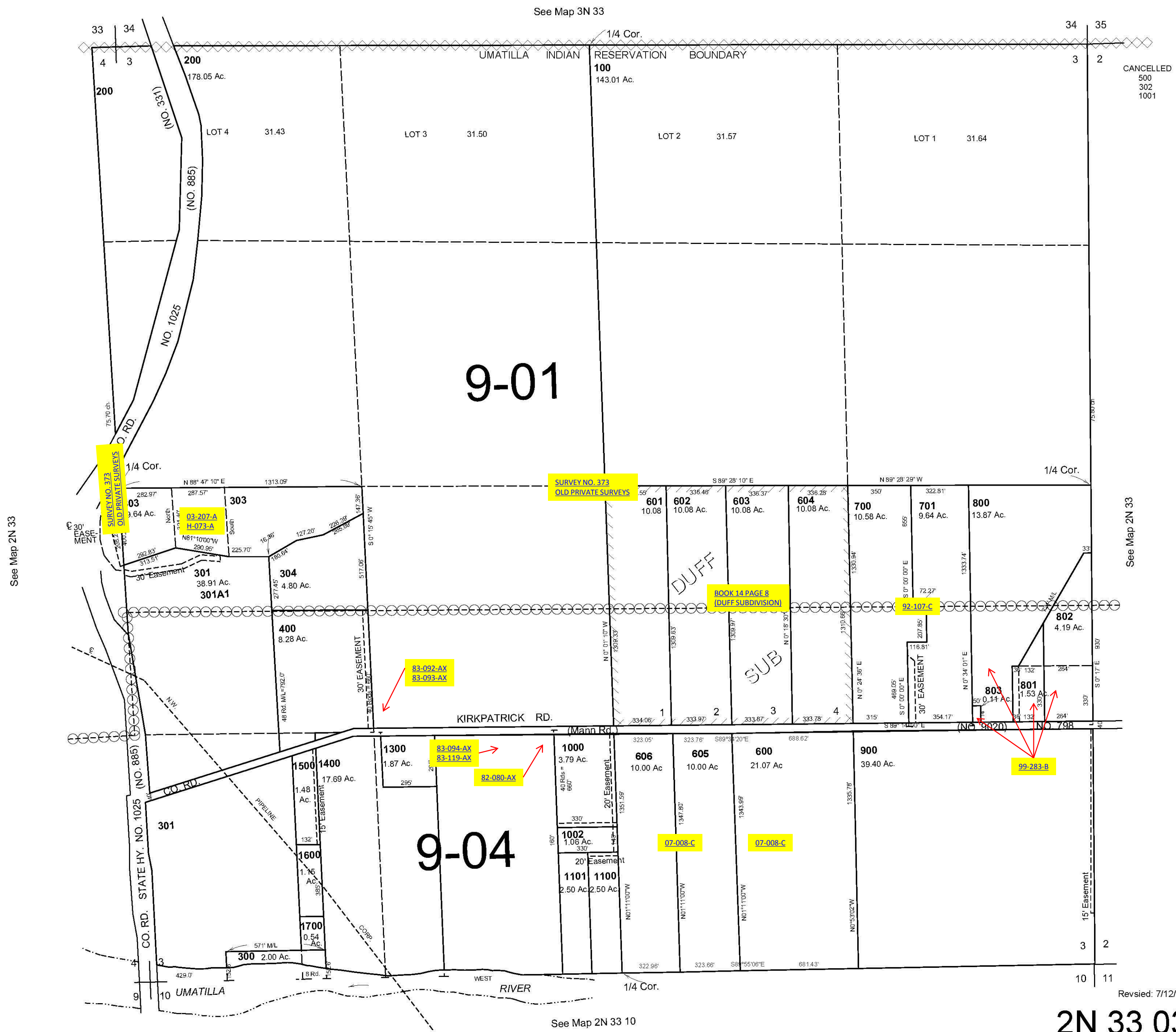


ALSO SEE SURVEYS 12-067-C, 82-060-B; CORNER RECORDS; G.L.O. SURVEYS; REDFIELD SURVEYS

This map was prepared for Assessment & Taxation purposes only and was NOT prepared nor is it suitable for legal, engineering or surveying purposes.

SEC 3 T2N R33E WM UMATILLA COUNTY SCALE 1"=400'

2N 33 03
AERIAL PHOTO NO. NZ 4P-98



Revised: 7/12/11

2N 33 03