

ALSO SEE SURVEYS 06-437-B, PARTITION PLAT 2011-09, 90-050-C, 92-092-C, 93-054-C, 96-055-G, F-012-C, 00-012-B, D-004-A; CORNER RECORDS; G.L.O. SURVEYS

This map was prepared for Assessment & Taxation purposes only and was NOT prepared nor is it suitable for legal, engineering or surveying purposes.

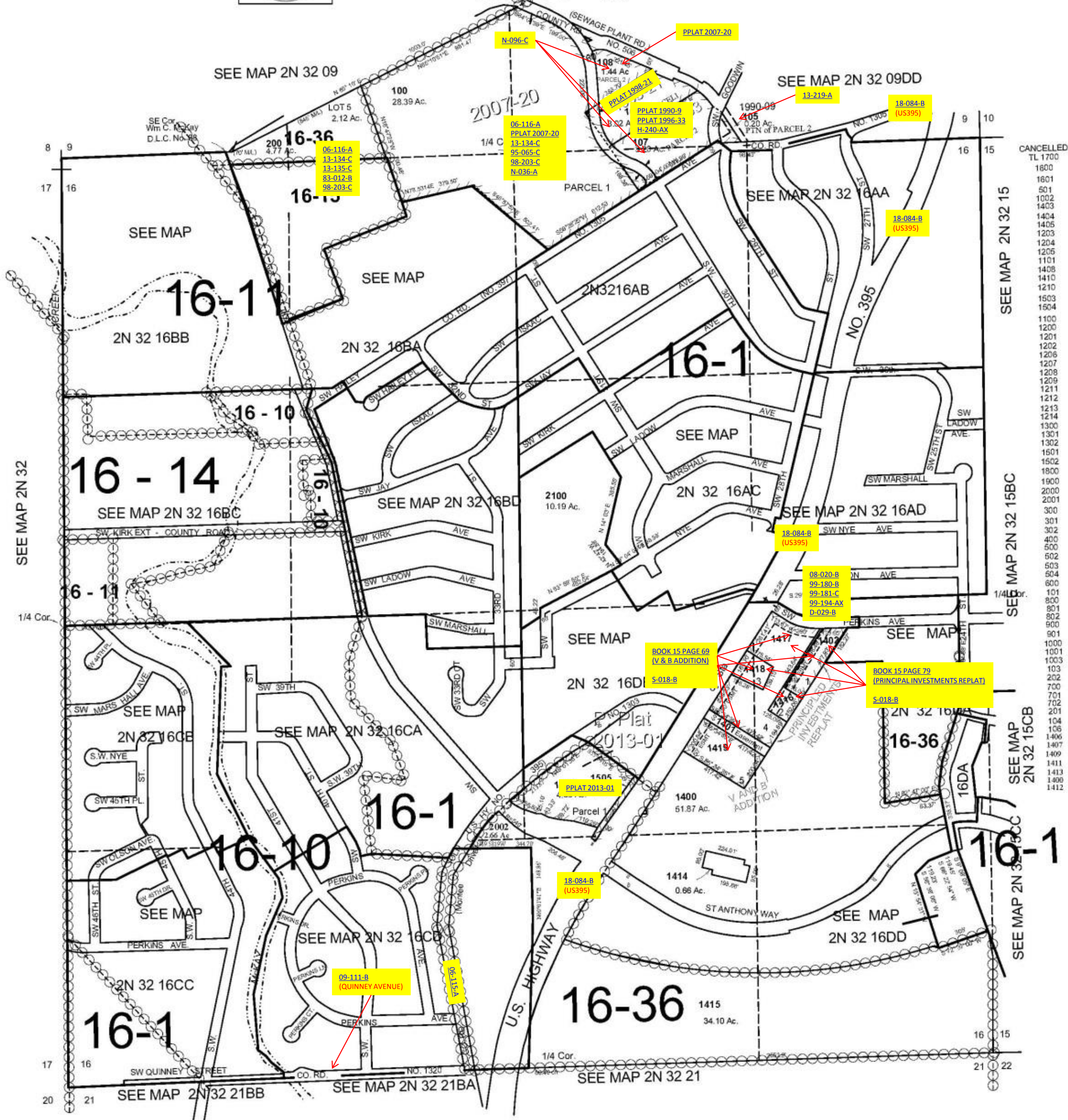


SEC 16 T2N R32E WM
UMATILLA COUNTY

SCALE: 1" = 400'

2N 32 16
INDEX

AERIAL PHOTO NO 4P-59



- CANCELLED
- TL 1700
- 1600
- 1601
- 501
- 1002
- 1403
- 1404
- 1405
- 1203
- 1204
- 1205
- 1101
- 1408
- 1410
- 1210
- 1603
- 1604
- 1100
- 1200
- 1201
- 1202
- 1206
- 1207
- 1208
- 1209
- 1211
- 1212
- 1213
- 1214
- 1300
- 1301
- 1302
- 1601
- 1602
- 1800
- 1900
- 2000
- 2001
- 300
- 301
- 302
- 400
- 500
- 502
- 503
- 604
- 600
- 101
- 800
- 801
- 802
- 900
- 901
- 1000
- 1001
- 1003
- 103
- 202
- 700
- 701
- 702
- 201
- 104
- 106
- 1406
- 1407
- 1409
- 1411
- 1413
- 1408
- 1412

REVISED: 07/18/13

2N 32 16