

ALSO SEE SURVEY 04-129-G

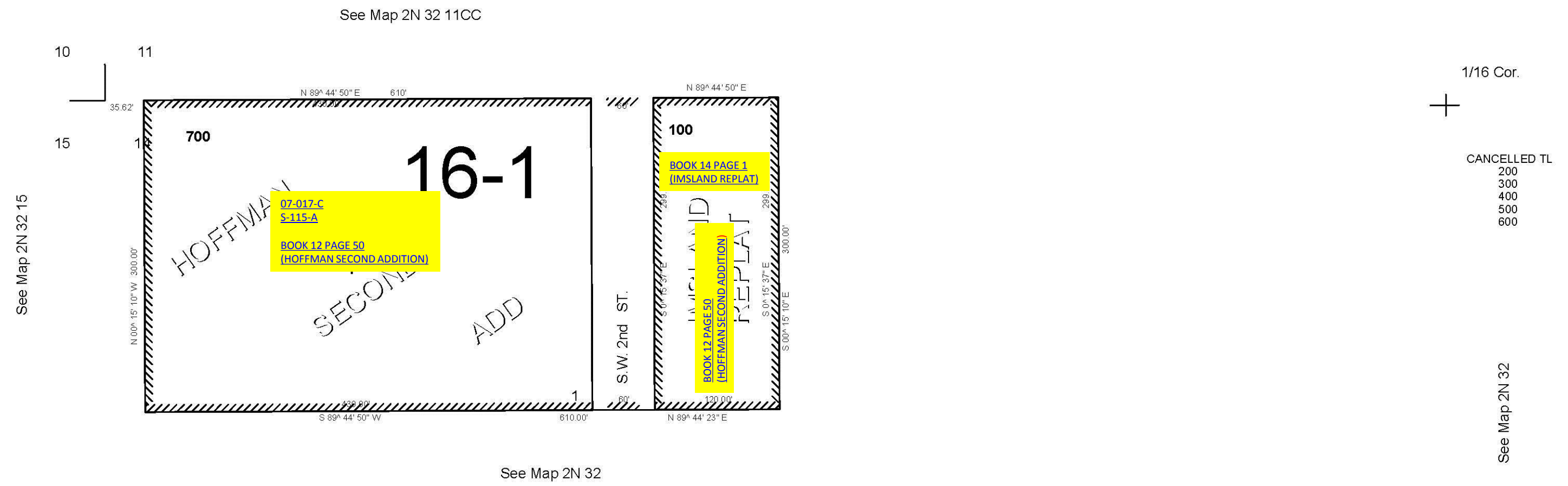
This map was prepared  
for assessment purposes

NW1/4 NW1/4 SEC 14 T2N R32E WM  
UMATILLA COUNTY  
SCALE 1"=100'

9/07/06

2N 32 14BB

AERIAL PHOTO NO. 4P-60



2N 32 14BB